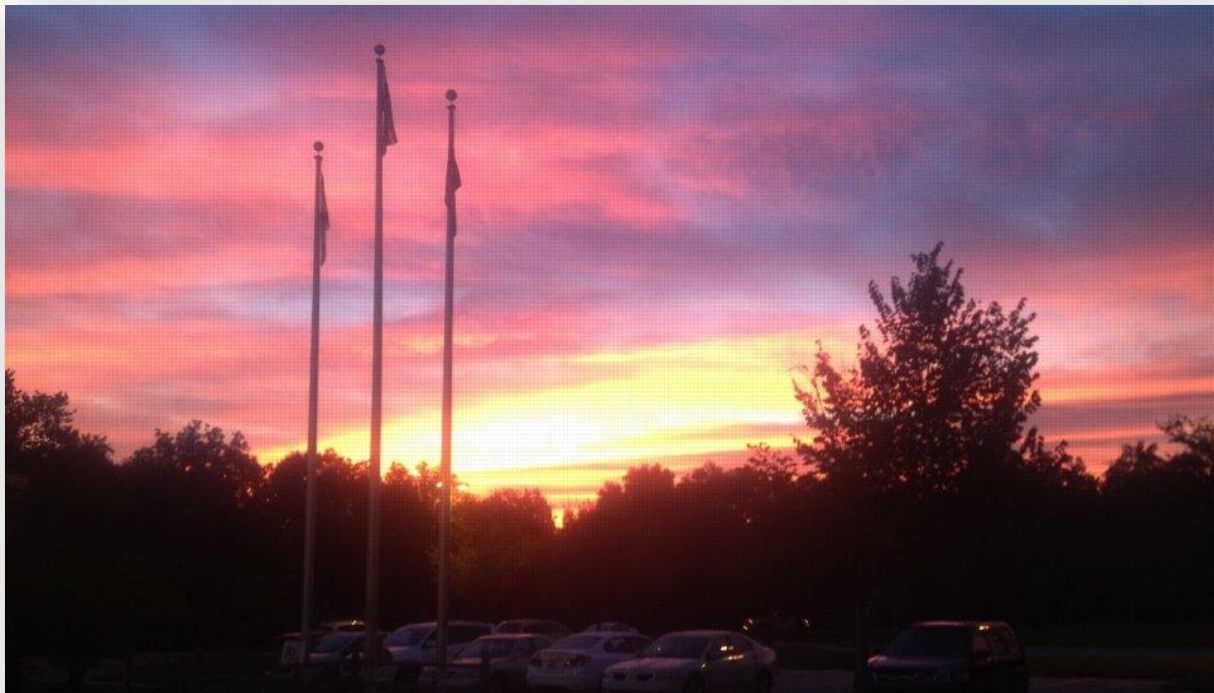


FISCAL YEAR

2021



THE SCHOOL DISTRICT OF LEON COUNTY, FLORIDA



Final Approved Budget July 1, 2020 - June 30, 2021 All Funds

Tuesday, September 8, 2020
The Aquilina C. Howell Center
3955 West Pensacola Street
Tallahassee, Florida 32304

Website: leonschools.net

Table of Contents

I. Introductory Section	
Superintendent’s Letter	1
Vision & Mission	4
Superintendent, School Board & Executive Leadership	4
Budget Process & Budget Overview	5
Budget Highlights	6
Budget Summary Table	7
Expenditures	8
II. Millage & Taxes	
Leon County Assessed Taxable Value Discussion	10
Ten Year Historical Trend - Taxable Assessed Property Value History	
Tax Information & Millage Calculation.....	11
Absolute Millage Rate Comparison	12
Property Tax Millage Rate	13
Local Tax Dollars	14
Effects of the New Millage Rates (Estimated Cost to Taxpayer)	15
III. General Fund:	
Sources & Uses Overview	16
Sources of Funds.....	16
Uses of Funds.....	16
Major Budgetary Allocations	16
Basis of Accounting.....	17
Local Sources	17
State Sources	18
Florida Education Finance Program	
Categoricals & Others	
Federal Sources	18
Fiscal Year 2020-2021 Budget Expenditures	18
Major Budget Assumptions	
Salaries	
Summary Statements of Operating Budget: Key Points of Interest	20
General Fund Estimated Appropriations & Balances	21
Analysis of General Operating Revenues & Expenditures	22
General Estimated Revenues	23
General Estimated Appropriations.....	24
General Estimated Appropriations Exhibits	25
General Fund Narrative of Expenditure Appropriation Differences Final Budget FY Ending June 30, 2020	28
Comparative Analysis of Budgeted Expenditures by Function	29
Comparative Analysis of Budgeted Expenditures by Object Grouping	30
Analysis of Estimated Beginning & Ending Fund Balances	33

IV. SPECIAL REVENUE FUNDS:

Special Revenue Key Points of Interest34
Summary of Combined Revenue & Expenditures & Balances – Federal & Nutrition Services.....35
Comparative Analysis of Projected Expenses by Object – Nutrition Services.....36
Comparative Analysis of Objects of Expense – Federal Projects37
Comparative Analysis of Budgeted Revenue – Federal Projects38
Comparative Analysis of Functions of Expense – Federal Projects39
Comparative Analysis of Budgeted Revenue – CARES Act (ESSER)40
Comparative Analysis of Objects of Expense – CARES Act (ESSER)41
Comparative Analysis of Budgeted Revenue – CARES Act (GEER)42
Comparative Analysis of Objects of Expense – CARES Act (GEER)43

V. CAPITAL IMPROVEMENT FUNDS:

Capital Outlay Key Points of Interest44
Capital Improvement Program45
Combined Summary – All Funds/ All Projects46
Capital Improvement Expenditures & Fund Balance.....47
Public Education Capital Outlay (PECO).....48
Revenue Anticipation Notes, Series 2011, 1011.14 Bus Purchase49
District Bond Funds50
Capital Outlay/ Debt Service (CO/DS).....51
Local Capital Improvement Fund (LCIF) – 1.50 Mills52
Other Capital Projects53

VI. DEBT SERVICE FUNDS:

Debt Service Key Points of Interest54
Combined Summary – All Funds/ All Projects55
Debt Service Analysis of Expenditures & Revenues56
State Board Of Education & Capital Outlay Bond Issue57
Special Act Bonds58
Revenue Anticipation Note - Series 2011 – 1011.14 Bus Purchase59
General Obligation Bond Issue (GOBI).....60
Other Debt Service61

VII. FIDUCIARY FUNDS:

Fiduciary Funds Overview62
Trust & Agency
Student Activity Internal Account Programs
Trust & Agency Fund – Estimated Revenue, Appropriations & Balances63
Statement of Revenue, Expenditures & Balances (School Internal Activity Account)64

VIII. Information Section

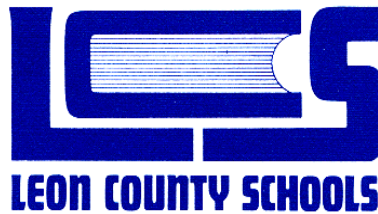
2020-2021 LCS Organization Chart65
How to Read the Budget66
Funds66
Revenues67
Expenditures67

Cost Center.....	67
Function	67
Object	68
Measurement Basis for Budget Revenues & Expenditures	69
Glossary of Terms	71

INTRODUCTION

BOARD CHAIR
DeeDee Rasmussen

BOARD VICE CHAIR
Georgia "Joy" Bowen



BOARD MEMBERS
Darryl Jones
Alva Swafford Striplin
Rosanne Wood

SUPERINTENDENT
Rocky Hanna

September 08, 2020

Dear School Board Members and Citizens of Leon County,

I am pleased to present the Leon County School Board budget for Fiscal Year 2020-2021. The total budget is \$529 million and includes the General Fund, (operating budget) of \$334.7 million. This fund is 63% of the total budget. The Capital Projects Fund is the second largest fund at \$73.6 million and represents 14% of the overall budget. The remaining balance includes Federal Contract Funds (\$36.5 million), Food Service (\$11.4 million), and Debt Service (\$64.4 million).

The success of students is our common goal, and this budget ensures our efforts toward this goal are properly funded. This budget supports 52 schools, including 22 elementary, 2 kindergarten through grade 8 schools, 8 middle schools, 6 high schools, 1 vocational-technical college, 1 adult education center, 5 charter schools, and 7 special/alternative schools. It will provide educational services for 33 thousand students in kindergarten through the 12th grade, as well as approximately 3,100 adult students at the Lively Technical Center. It will provide payment for over 2,200 teachers and 500 aides who work directly with students in the classroom. The budget will enable over 3 million meals to be served this year, and pay for transportation so nearly 12 thousand students are safely transported to and from their homes to schools over the 180 day school year. Over \$25 million will be contributed towards over 4,100 employee health insurance premiums at an average cost per covered employee of \$6,363. Finally, the budget will allow the school district to maintain and make improvements upon almost \$700 million of assets, including \$570 million of buildings and equipment contained within over 1,200 acres of school board property.

Student achievement is an element that defines a school or school district. High levels of student performance indicate our schools are providing excellent instruction, vital partnerships are working, and the community is invested in its school system.

For the 2020-2021 school year, our top priorities will be:

- Ensuring the safety and well-being of our students.
- Fostering student academic achievement and performance.
- Strengthening relationships and partnerships with our students' families and our local community.

As stated earlier, student success is the centerpiece of how we measure ourselves and how we expect to be assessed. It is an important benchmark, but not the only one. How well the district is managing your tax dollars includes; running a transportation system efficiently; providing meals to students; and developing alternative strategies for students who struggle in conventional educational settings. All of these are pieces of the overall puzzle.

Leon County Schools is constantly looking for ways to improve, and we always do better when the community is involved. The FY 2020-2021 budget is designed to: (1) meet student educational and school operating needs (2) have the flexibility to adapt to changing conditions during the year, and (3) provide a substantial "rainy day" reserve. Budget development, review, and consideration were completed with a detailed review

of every revenue and expenditure category within the context of the District’s mission, goals, and financial policies. I hope this document will serve the public as a valuable source of information about the district’s finances, operations, accomplishments, and future direction. It is with these goals in mind that I hereby submit and recommend this budget for the Leon County School Board for Fiscal Year 2021 (2020-2021).



Rocky Hanna
Superintendent of Schools

2757 W. Pensacola Street, Tallahassee, FL 32304 • Phone (850) 487-7100 • www.leonschools.net

“The Leon County School District does not discriminate against any person on the basis of sex (including transgender status, gender nonconforming, and gender identity), marital status, sexual orientation, race, religion, ethnicity, national origin, age, color, pregnancy, disability, military status, or genetic information.”

Building the Future Together



SUPERINTENDENT HANNA AND LCS SCHOOL BOARD MEMBERS

SCHOOL DISTRICT OF LEON COUNTY, FLORIDA

VISION

Leon County Schools will provide an engaging, safe and respectful learning environment that fosters effective communication, collaboration, and critical thinking while creating productive citizens who value diversity and positively contribute to society.

MISSION

The MISSION of Leon County Schools is to educate, inspire and empower all students to become responsible and engaged citizens who are equipped with the critical thinking skills needed to thrive in our global society.

SUPERINTENDENT

Rocky Hanna

SCHOOL BOARD

DISTRICT 1

Alva Striplin

DISTRICT 2

Rosanne Wood

DISTRICT 3

Darryl Jones

DISTRICT 4

Dee Dee Rasmussen, Chair

DISTRICT 5

Georgia "Joy" Bowen, Vice Chair

LEADERSHIP TEAM

Dr. Alan Cox, School Management, ESE & Health
Dr. Michelle Gayle, Professional and Community Services
Deana McAllister, Human Resources and Labor and Employee Relations
Gillian Gregory, Academic Services
Dr. Kathleen Rodgers, Intervention Services
Kimberly Banks, Chief Financial Officer
John Hunkiar, Safety and Security

BUDGET PROCESS

The time frame for the budget adoption process is mandated by the Truth in Millage (TRIM) guidelines found in Florida Statutes 200.065 and 1011. These rules establish tentative and final hearing deadlines, public advertising guidelines (including advertisement format and timelines for public review in newspapers), and final public Board hearing and adoption timelines. The dates set for the Fiscal Year 2020-2021 budget submission were:

July 21, 2020 - Board Meeting for approval of advertising the budget and proposed millage rates in the newspaper.

July 28, 2020 - Board meeting for first tentative budget public hearing and tentative adoption of the 2021 budget and millage rates.

September 8, 2020 - Board meeting for final hearing and final adoption of the 2021 budget and millage rates.

The Superintendent depends on the professionalism and expertise of the cost center administrators to present budgets that support the Superintendent and Board Priorities in the most efficient and economical manner.

The Staffing Plan amount of \$173.1 million represents 52% of the General Fund budget. The Staffing Plan is based on allocating units. Teacher and clerical units are equitably allocated based on the number of students at the schools. Special program needs are also taken into consideration. Each principal is consulted to ensure each school's unique needs have been considered. The Staffing Plan works within a total dollar amount for school staffing purposes considered to be fiscally attainable as provided by the Budget Department. The Superintendent consolidated the recommendations for the staffing plan with the recommendations of the Budget from the Leadership Team. The Superintendent makes the final decision for budget and staffing material presented to the School Board for adoption.

BUDGET OVERVIEW

The Fiscal Year 2020-2021 budget consists of five major funds totaling \$529 million under the budgetary authority of the School Board. Florida law requires the District to establish budgets for all governmental fund types. The budgets presented in this book include all governmental funds for which the Board is legally responsible. These funds exist as self-balancing sets of accounts with their own assets, liabilities, and fund equity balances. Each serves a specific purpose in the fiscal operation of the District. Together these funds function like a team to support the fiscal transactions that must occur to finance the daily operations of each school and to ensure the long-term continuation of the entire organization. The budgets presented in this book are organized by fund as follows:

- Governmental Fund Types
 - General Fund
 - Special Revenue Funds (includes Food Service, Federal Contracted Programs and Coronavirus Aid, Relief, And Economic Security (Cares) Act)
 - Capital Projects Funds
 - Debt Service Funds
- Fiduciary Fund Types

BUDGET HIGHLIGHTS

- The total overall FY 2020 budget (\$529 million) decreased \$5.4 million (1%) from the adopted FY 2020 budget.
- The General Fund budget increased \$1 million (.3%) compared to the original FY 2020 adopted budget and planned expenditures are 12% more than the actual operating expenditures for FY 2020.
- Major cost increases for the General Fund include \$3 million related to a 3% increase in Florida Retirement System contribution; \$2.9 million for salary increases for employees.
- The General Fund ending fund balance (\$51.7 million) carried forward from Fiscal Year 2020 into Fiscal Year 2021 increased from the prior year by \$1.1 million.
- The adopted millage rate of 5.963 assesses \$120.4 million (100%) and is budgeted at \$115.6 million (96%).
- The district did not raise taxes in FY 2021. The adopted millage rate of 5.963 is less than the 2020 levied rate of 6.167 mills.
- The operating portion of this levy (3.715 required local effort + 0.748 discretionary = 4.463 mills) is \$90 million at 100%, and is budgeted at 96% or \$86.5 million. The required local effort millage rate of 3.715 mills generates \$75 million at 100% of the levy, and is budgeted at 96% of the levy or \$72 million. The Board is required to levy this millage to receive a matching amount of \$132 million in additional state revenue.
- The capital outlay levy of 1.50 mills generates \$30.3 million at 100% of the levy, and is budgeted at 96% or \$29 million.
- A homeowner with a \$200 thousand home that did not increase in assessed value for the 2020-2021 Fiscal Year and has a \$25 thousand homestead exemption will pay \$35.70 less for school board taxes than was paid the previous year.

(NOTE: Budgeted amounts listed in the format of '\$13 million' or '\$6.5 million' are approximations. The purpose for clarifying this point at the beginning of this document is so the reader (and writer) can avoid redundantly using the word 'approximately' numerous times throughout the Executive Summary, thus making the document less cumbersome to read.)

2020-2021 BUDGET SUMMARY

The proposed operating budget expenditures of the District School Board of Leon County, Florida are 12% more than last year's total operating expenditures.

PROPOSED MILLAGE LEVY:

LOCAL EFFORT	3.715
DISCRETIONARY	0.748
CAPITAL OUTLAY	1.500
TOTAL	5.963

ESTIMATED REVENUES:	GENERAL FUND	SPECIAL REVENUE	DEBT SERVICE	CAPITAL PROJECTS	TRUST & AGENCY	TOTAL ALL FUNDS
FEDERAL SOURCES	\$299,721.30	\$54,021,758.80	\$2,620,632.30	\$0.00	\$0.00	\$56,942,112.40
STATE SOURCES	\$180,735,689.97	\$160,000.00	\$412,807.50	\$1,460,863.00	\$0.00	\$182,769,360.47
LOCAL SOURCES	\$94,422,812.64	\$1,180,100.00	\$0.00	\$48,570,343.00	\$500.00	\$144,173,755.64
TOTAL SOURCES	\$275,458,223.91	\$55,361,858.80	\$3,033,439.80	\$50,031,206.00	\$500.00	\$383,885,228.51
TRANSFERS IN	\$7,499,716.00	\$0.00	\$21,775,579.31	\$0.00	\$0.00	\$29,275,295.31
OTHER FINANCING SOURCES	\$0.00	\$0.00	\$0.00	\$0.00	\$0.00	\$0.00
FUND BALANCES (July 1, 2020)	\$51,723,052.92	\$975,173.30	\$39,614,740.77	\$23,636,796.79	\$42,842.71	\$115,992,606.49
TOTAL REVENUES & BALANCES		\$56,337,032.10	\$64,423,759.88	\$73,668,002.79	\$43,342.71	\$529,153,130.31
EXPENDITURES:						
INSTRUCTION	\$192,936,322.20	\$24,859,728.03	\$0.00	\$0.00	\$23,342.71	\$217,819,392.94
PUPIL PERSONNEL SERVICE	\$9,031,343.39	\$1,448,080.79	\$0.00	\$0.00	\$0.00	\$10,479,424.18
INSTRUCTIONAL MEDIA SERVICES	\$4,184,034.88	\$0.00	\$0.00	\$0.00	\$0.00	\$4,184,034.88
INSTRUCTION & CURRICULUM SERVICES	\$4,374,725.39	\$8,711,450.47	\$0.00	\$0.00	\$0.00	\$13,086,175.86
INSTRUCTIONAL STAFF TRAINING	\$1,611,715.38	\$1,229,249.66	\$0.00	\$0.00	\$0.00	\$2,840,965.04
INSTRUCTIONAL RELATED TECHNOLOGY	\$2,985,265.39	\$143,561.00	\$0.00	\$0.00	\$0.00	\$3,128,826.39
BOARD OF EDUCATION	\$1,424,864.35	\$0.00	\$0.00	\$0.00	\$0.00	\$1,424,864.35
GENERAL ADMINISTRATION	\$1,148,555.11	\$1,784,827.68	\$0.00	\$0.00	\$0.00	\$2,933,382.79
SCHOOL ADMINISTRATION	\$23,154,881.27	\$0.00	\$0.00	\$0.00	\$0.00	\$23,154,881.27
FACILITIES ACQUISITION AND CONSTRUCTION	\$1,892,542.43	\$0.00	\$0.00	\$30,458,489.27	\$0.00	\$32,351,031.70
FISCAL SERVICES	\$2,243,007.06	\$29,511.40	\$0.00	\$0.00	\$0.00	\$2,272,518.46
FOOD SERVICE	\$0.00	\$11,463,743.17	\$0.00	\$0.00	\$0.00	\$11,463,743.17
CENTRAL SERVICES	\$10,689,068.14	\$997,206.07	\$0.00	\$0.00	\$0.00	\$11,686,274.21
PUPIL TRANSPORTATION SERVICES	\$13,441,813.01	\$1,377,026.35	\$0.00	\$463,522.33	\$0.00	\$15,282,361.69
OPERATION OF PLANT	\$24,190,603.39	\$1,159,977.71	\$0.00	\$0.00	\$0.00	\$25,350,581.10
MAINTENANCE OF PLANT	\$10,166,326.06	\$2,794,350.47	\$0.00	\$0.00	\$0.00	\$12,960,676.53
ADMINISTRATIVE TECHNOLOGY SERVICES	\$4,658,760.92	\$320,000.00	\$0.00	\$0.00	\$0.00	\$4,978,760.92
COMMUNITY SERVICES	\$6,365,079.45	\$0.00	\$0.00	\$0.00	\$0.00	\$6,365,079.45
DEBT SERVICE	\$0.00	\$0.00	\$24,527,811.61	\$0.00	\$0.00	\$24,527,811.61
TOTAL EXPENDITURES	\$314,498,907.82	\$56,318,712.80	\$24,527,811.61	\$30,922,011.60	\$23,342.71	\$426,290,786.54
TRANSFERS OUT	\$2,619,058.56	\$0.00	\$0.00	\$26,656,236.75	\$0.00	\$29,275,295.31
FUND BALANCES (June 30, 2021)	\$17,563,026.45	\$18,319.30	\$39,895,948.27	\$16,089,754.44	\$20,000.00	\$73,587,048.46
TOTAL EXPENDITURES, TRFRS, & BALANCES	\$334,680,992.83	\$56,337,032.10	\$64,423,759.88	\$73,668,002.79	\$43,342.71	\$529,153,130.31
	63.25%	10.65%	12.17%	13.92%	0.01%	100.00%

THE TENTATIVE, ADOPTED AND/OR FINAL BUDGETS ARE ON FILE IN THE OFFICE OF THE ABOVE MENTIONED TAXING AUTHORITY AS PUBLIC RECORD.

EXPENDITURES

GENERAL FUND

General Fund expenditures of \$314.5 million account for 74% of budgeted expenditures in all funds. The total General Fund budget is \$334.7 million. The General Fund is the one most discussed publicly because it pays for day-to-day operations, including school teachers, principals, assistant principals, instructional aides, and most non-school District administration and staff. These day-to-day activities directly affect parents and students during a school year, thus causing more discussion surrounding these activities.

Budgeted Expenditures of \$193 million for direct classroom instruction account for 61% of the total budgeted expenditures.

Expenditures of \$22.2 million for support services that nearly have a direct impact on the classroom, such as guidance counselors, social workers, instructional media services, instruction and curriculum development services, instructional staff training, and instructional technology account for 7% of budgeted expenditures.

Student Transportation of \$13.4 million and School Administration of \$23 million account for 11.6% of the budgeted expenditures. School administration includes each principal and the associated staff required to run the daily school operations.

The Transportation Department will transport 12,000 students or 36% of the student population, over 4 million miles in Fiscal Year 2021.

Operation of Plant expenditures of \$24 million (7.6%) consist of activities concerned with keeping the physical plant open. These costs include utility costs (phone, sewage, water, and electricity), custodial costs (such as cleaning and disinfecting), ground maintenance, telephone service, and insurance costs of school buildings.

Maintenance of Plant expenditures of \$10 million (3%) consist of activities to keep the grounds, buildings, and equipment at an acceptable level of efficiency through repairs or preventative maintenance.

Administrative Technology expenditures of \$4.6 million (1.5%) include technology support at the District level to maintain the student information system and the business support systems, such as personnel, payroll, finance and warehousing.

Central Services expenditures of \$10.7 million (3.4%) include activities to prepare student statistical data, writing, editing, disseminating information to the public and staff, recruiting and placement of staff, staff transfers, health services, staff accounting, planning and policy development.

Another method to analyze expenditures is to compare the various categories (objects) of expenditures.

Salaries and benefits account for \$234 million (74%) of all operating expenditures.

A 1% salary increase with benefits for all employees is \$2.3 million.

There are approximately 4,500 full time employees, inclusive of 2,300 instructional employees.

SPECIAL REVENUE FUNDS

These funds totaling \$56.3 million consist of Food Service (\$11.4 million total budget), Federal Contracted Programs (\$36.5 million total budget), and Coronavirus Aid, Relief and Economic Security (CARES) Act (\$8.3 million). Food Service salaries and benefits totaling \$5.8 million comprise 50.4% of the Food Service Program expenditures. The materials and supplies expenditure is \$5.3 million and comprises 46.5% of total expenditures. The remaining balance of \$351 thousand is 3% of expenditures and pays for energy, purchased services, and capital outlay.

Federal Contracted Programs expenditures total \$36.5 million. The majority of these expenditures are \$26 million for personnel salaries and benefits representing 71% of the total expenditures and purchased services

totaling \$4.1 million, 11.3% of the expenditures. Services purchased in this program include specialized testing and supplemental instruction.

This fiscal year the district will also receive funds related to the Coronavirus Aid, Relief and Economic Security (CARES) Act. The first is the Elementary and Secondary School Emergency Relief (ESSER) funds; with a budget of \$7.0 million. The second is the Governor’s Emergency Education Relief (GEER) fund with a budget of \$1.3 million.

DEBT SERVICE

The Fiscal Year 2020-2021 budget for Debt Service totals \$64.4 million. Debt Service expenditures of \$24.5 million are for paying principal and interest on the outstanding debt. The budget includes principal payments of \$18.7 million and interest payments of \$5.8 million in Fiscal Year 2020-2021.

CAPITAL PROJECTS FUNDS

The Capital Outlay fund accounts for building, renovation, maintenance, purchases of school buses, furniture, fixtures and equipment. The School Board has budgeted approximately \$73.6 million for Capital Improvements throughout the school district during Fiscal Year 2020-2021.

The initial budget is appropriated as follows:

- New Construction & Remodeling: \$22.4 million (30.9%)
- Computer Software: \$3.6 million (5%)
- Library Books, AV, Motor Vehicles & Buses: \$463 thousand (0.64%)
- Furniture/Fixtures/Equipment: \$2.1 million (2.9%)
- Transfers: \$27.9 million (38.4%)
- Land & Land Improvements: \$1 million (1.43%)
- Fund Balances: \$15 million (20.6%)

MILLAGE & TAXES

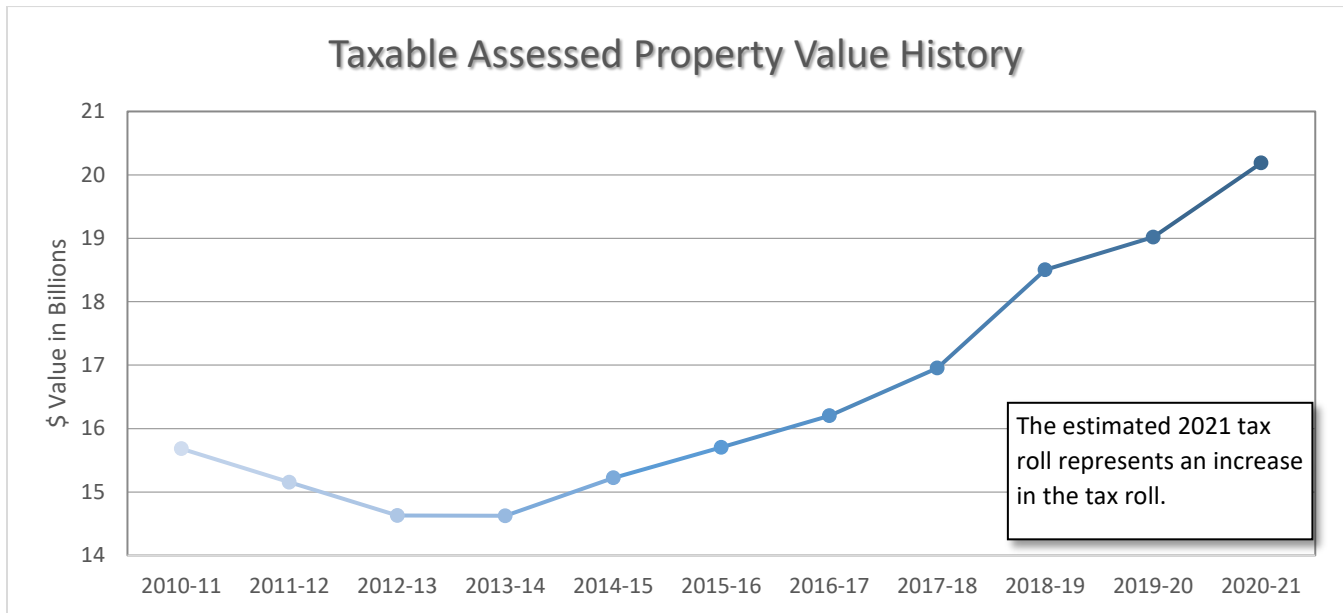
LEON COUNTY ASSESSED TAXABLE VALUE DISCUSSION

The primary mission of the Leon County Property Appraiser's Office is to locate, identify, and appraise (at current market value), all property subject to ad valorem taxes, maintain market value equity on the tax roll, and administer all exemptions in accordance with Florida Statutes and the Rules and Regulations of the Florida Department of Revenue. The assessed value determined by the Leon County Property Appraiser's Office is used by the Legislature, in tandem with the assessed property values of all 67 Florida School Districts, to determine the Required Local Effort Millage rate to fund the Florida Educational Finance Program. This property value is also used by school districts to assess the 1.5 mill capital outlay rate for capital projects and the 0.748 discretionary millage rate as a source of funding for district operational expenditures.

Part of the mission of the Property Appraiser's Office involves assisting the public (citizens, taxing authorities, and local government) in accessing and utilizing the tremendous real estate database, maps, and other associated information which the Property Appraiser's Office maintains and updates.

The Property Appraiser's Office has established 24 hour access to the public records of its office through the internet, convenient satellite filing locations for Homestead Exemption applications, Saturday and after-hours availability.

TEN YEAR HISTORICAL TREND (IN BILLIONS) Leon County Assessed Value of Property



Note: As local tax assessments increase, state FEFP dollars decrease and the required local effort millage is adjusted accordingly.

TAX INFORMATION

- Tax Roll Data
- Tax Millage Rates
- Roll Back Rates
- Local Tax Dollars

Ad valorem property taxes are the largest and most critical single source of local revenue to the school district. Each year the School Board is required to assess its educational requirements and needs. Property tax millage is levied for the general operating fund, for the capital projects and to retire the debt service. The following pages represent the School Board millages required to run the school district; the technical “legally required” millage rollback calculation which causes most of the confusion with citizens; and what each of the school district millages generate in actual dollars for the operations.

MILLAGE CALCULATION

EXPLANATION OF ROLL BACK RATE

Property taxes are based on a unit called a “mill.” A mill is the rate used to calculate taxes based upon assessed property value. One mill is equal to \$1.00 per \$1,000 of assessed property value.

The “Roll Back Rate” is found in Florida Statutes, Chapter 200. The method of calculation is determined by the Department of Revenue. The “roll back rate” does not include any Debt Service millage rates.

The “roll back rate” is the millage rate ON THE NEW TAX ROLL that will generate the same total dollars raised in the prior year.

The TOTAL adopted fiscal year 2021 millage rate of 5.963 decreased by 0.204 mills from the 2020 assessed millage of 6.167.

ABSOLUTE MILLAGE RATE COMPARISON
2020-2021 MILLAGE INFORMATION

MILLAGE TYPE	2018-2019	2019-2020	2020-2021	CHANGE 2019-20 vs 2020-21
Required Local Effort	4.095	3.919	3.715	(0.204)
Discretionary	0.748	0.748	0.748	0.000
TOTAL OPERATING	4.843	4.667	4.463	(0.204)
Capital Outlay	1.500	1.500	1.500	0.000
MILLAGE SUB-TOTAL	6.343	6.167	5.963	(0.204)
Debt Service	0.000	0.000	0.000	0.000
TOTAL MILLAGE	6.343	6.167	5.963	(0.204)

ROLL BACK RATE COMPARISON TO ACTUAL

MILLAGE TYPE	ROLL BACK 2018-2019	ROLL BACK 2019-2020	ROLL BACK 2020-2021	CHANGE 2019-20 vs 2020-21
Required Local Effort	4.100	3.945	3.760	(0.185)
Discretionary	2.131	2.165	2.157	(0.008)
TOTAL OPERATING	6.231	6.110	5.917	(0.193)
MILLAGE TOTAL (TOTAL ROLL BACK RATE)	6.231	6.110	5.917	(0.193)

PROPERTY TAX MILLAGE RATES
2020-2021

COMPONENT	2018-2019 ACTUAL	2019-2020 ACTUAL	2020-2021 ESTIMATED	DIFFERENCE 2019-20 vs 2020-21
Required Local Effort	4.095	3.919	3.715	(0.204)
Discretionary	0.748	0.748	0.748	0.000
Critical Operating Needs	0.000	0.000	0.000	
Supplemental Discretionary	0.000	0.000	0.000	0.000
SUB-TOTAL OPERATING	4.843	4.667	4.463	(0.204)
Capital Outlay	1.500	1.500	1.500	0.000
SUB-TOTAL NON-VOTED	6.343	6.167	5.963	(0.204)
Debt Service	0.000	0.000	0.000	0.000
TOTAL LEVY	6.343	6.167	5.963	(0.204)

TAX ROLL DATA

2020-2021 Certified Tax Roll (T)	\$20,187,738,446.00
2019-2020 Certified Tax Roll (F)	\$19,019,526,298.00
2019-2020 Dollar Increase	\$1,168,212,148.00
2019-2020 Percent Increase	6.14%

(T) = Tentative

(F) = Final

1 Mill =	\$20,187,738.45 @ 100%
	\$19,380,228.91 @ 96%

LOCAL TAX DOLLARS
2020-2021

	2018-2019 ACTUAL	2019-2020 ACTUAL	2020-2021 ESTIMATED	DOLLAR CHANGE 2019-20 vs 2020-21	PERCENT CHANGE 2019-20 vs 2020-21
Required Local Effort (3.7150)	\$70,990,218.00	\$71,556,023.00	\$71,997,552.00	\$441,529.00	0.62%
Discretionary Operating (.748)	\$12,964,453.00	\$13,657,541.00	\$14,496,412.00	\$838,871.00	6.14%
SUB-TOTAL	\$83,954,671.00	\$85,213,564.00	\$86,493,964.00	\$1,280,400.00	1.50%
Capital Outlay (1.500)	\$25,984,849.00	\$27,388,118.00	\$29,070,344.00	\$1,682,226.00	6.14%
SUB-TOTAL	\$109,939,520.00	\$112,601,682.00	\$115,564,308.00	\$2,962,626.00	2.63%
TOTAL LOCAL	\$193,894,191.00	\$197,815,246.00	\$202,058,272.00	\$4,243,026.00	2.14%

Based on 96% of total proceeds derived by multiplying millage times the tax roll: \$20,187,738,446.00

RLE @ 100%	\$74,997,448.33	RLE @ 100%
DISC @ 100%	\$15,100,428.36	DISC @ 100%
C/O @ 100%	\$30,281,607.67	C/O @ 100%
TOTAL @ 100%	<u>\$120,379,484.35</u>	@ 100%

**EFFECTS OF THE NEW MILLAGE RATES ON THE INDIVIDUAL TAXPAYER
(NO RE-ASSESSMENT INCREASE)**

	EXAMPLES			
	A	B	C	D
2019 Assessed Value	\$100,000.00	\$125,000.00	\$150,000.00	\$200,000.00
LESS: Homestead Exemption	<u>-\$25,000.00</u>	<u>-\$25,000.00</u>	<u>-\$25,000.00</u>	<u>-\$25,000.00</u>
Taxable Assessed Value	\$75,000.00	\$100,000.00	\$125,000.00	\$175,000.00
2020 Tax (5.963 Mills)	\$447.23	\$596.30	\$745.38	\$1,043.53
2019 Tax (6.167 Mills)	<u>\$462.53</u>	<u>\$616.70</u>	<u>\$770.88</u>	<u>\$1,079.23</u>
Change in Taxes	<u>-\$15.30</u>	<u>-\$20.40</u>	<u>-\$25.50</u>	<u>-\$35.70</u>

**EFFECTS OF THE NEW MILLAGE RATES
ON THE INDIVIDUAL TAXPAYER
3.00% TYPICAL VALUATION INCREASE***

	EXAMPLES			
	A	B	C	D
2019 Assessed Value	\$103,000.00	\$128,750.00	\$154,500.00	\$206,000.00
Re-assessment (2.00%)				
2019 Assessed Value	\$103,000.00	\$128,750.00	\$154,500.00	\$206,000.00
LESS: Homestead Exemption	<u>-\$25,000.00</u>	<u>-\$25,000.00</u>	<u>-\$25,000.00</u>	<u>-\$25,000.00</u>
Taxable Assessed Valuation	\$78,000.00	\$103,750.00	\$129,500.00	\$181,000.00
2020 Tax (5.963 Mills)	\$465.11	\$618.66	\$772.21	\$1,079.30
2019 Tax (6.167 Mills)	<u>\$481.03</u>	<u>\$639.83</u>	<u>\$798.63</u>	<u>\$1,116.23</u>
Change in Taxes	<u>-\$15.91</u>	<u>-\$21.17</u>	<u>-\$26.42</u>	<u>-\$36.92</u>

*Based on an average percentage increase of total taxable value.

GENERAL FUND

GENERAL FUND BUDGET FISCAL YEAR 2020-2021

SOURCES AND USES OVERVIEW

The basic day-to-day resources of the school district are accounted for in the General Fund. From a perspective of services rendered, the resources of the General Fund are used to conduct educational and supportive services programs. General Fund operating expense examples include but are not limited to: salaries of employees; fringe benefits of employees; contracted services with vendors; materials and supplies to carry out operations; instructional materials and textbooks; professional fees; legal costs; utilities; transportation costs of moving children to and from school; and custodial services to maintain clean and healthy schools.



The total FY 2021 General Fund budget of **\$334.7 million** is **\$2 million (.6%)** more than the adopted FY 2020 budget and **\$1.2 million more (.35%)** than the end of year FY 2020 amended budget. Total estimated revenues (including transfers) for FY 2020-2021 are \$283 million and proposed expenditures total \$314.5 million. Carryforward fund balance figures include a committed balance of \$493 thousand; Non-Spendable (inventory) balance of \$1.2 million; Assigned balance of \$24.5 million, of which \$5 million is the emergency fund balance; and an unassigned balance of \$25.6 million

SOURCES OF FUNDS

Resources of the General Fund are derived from local, state and federal sources. Approximately 36% of the total estimated revenue base is derived from local sources (\$102 million), comprised primarily of property taxes, fees, interest income and indirect cost reimbursements and transfers from other funds. State sources account for approximately 63.9% (\$180.7 million). Federal sources account for less than 1% (\$300 thousand). A significant portion of the State revenue received is restricted, (See "Categoricals/ Grants") and must be spent using specific criteria.

USES OF FUNDS

The General Fund budget's **total expenditures** are **\$314.5 million**. The **majority** of expenditures is for **salaries (\$178.2 million)** and **employee benefits (\$60 million)** totaling **\$234.1 million**, and is **73.9% of total** estimated expenditures. From a functional (type of service rendered) approach the sum of expenditures for instruction (\$192.9 million) and instructional support (\$22.8 million - pupil personnel, instructional media, curriculum development, in-service training, and instructional related technology), totals \$215.1 million (68.4% of total expenditures). School administration, which includes primarily principals and assistant principals, is \$23.1 million (7.3% of expenditures). Support services (\$58.5 million - operation of plant, maintenance, custodial services, transportation and central services), and other support service (\$17.7 million – Board of Education, general administration, facilities acquisition and construction, fiscal services, administrative technology services and community services) account for approximately \$76.2 million (24.2%) of the budgeted expenditures.

MAJOR BUDGETARY ALLOCATIONS

Some of the major new and continuation budgetary allocations for FY 2020-2021 include the following:

- Continuation of prior years' pay raises for all employees (\$8.6 million)
- Reserve for Potential Budget Reductions (\$6 million)
- Additional Pay and Compression funds for Teachers and other Employees (\$4.6 million)

- Emergency Fund Balance (\$5 million)
- School Resource Officers Contract (\$1.4 million)
- School Resource Deputies for elementary schools (\$1 million)
- Bus Aides for every bus (\$900 thousand)
- Additional COVID-19 Operations funding for schools (\$840 thousand)
- School Behavior Specialists (\$800 thousand)
- Additional funding for Student Activities and Arts Programs (\$500 thousand)
- Deans for every Middle School (\$250 thousand)

BASIS OF ACCOUNTING

The financial transactions of the General Fund are recorded on the modified accrual basis of accounting. Under this concept, revenues are recognized when they become measurable and available to finance current operations; expenditures are recorded when the liability (obligation to pay) is incurred, and is expected to be paid within the normal operating cycle. A liability is incurred when the delivery of goods or services is complete.

The effect of this modified accrual basis influences the projections for property taxes, interest income, indirect costs and other cash flow considerations, including salaries, employee benefits and other major expenditure obligations.

GENERAL FUND ESTIMATED REVENUES

(The following comparisons are between the original 2020 adopted budget and this original 2021 adopted budget.)

Revenue projections, including transfers of \$7.5 million for fiscal year 2020-2021, are \$282.9 million. This is a net revenue increase of \$14 thousand, consisting of an increase in the State revenue of approximately \$2.5 million, a decrease in the local revenue of \$3.9 million, a 241 thousand decrease in federal revenue, and an increase in transfers from Capital Outlay and Debt Service of \$1.7 million.

In the discussion that follows, major revenue items are addressed with emphasis placed on significant changes from the prior year.

LOCAL SOURCES

AD VALOREM (PROPERTY TAXES)

The estimate for Ad Valorem Taxes is based on the certified tax roll provided by the county tax assessor's office, adjusted for exempt uncollectible taxes during the budget year.

Total property taxes in the FY 2021 General Fund are estimated at \$86.5 million, which is \$1.1 million more than actual collections in FY 2019-2020. Taxable property is reassessed by the tax assessor's office and in accordance with their time lines and criteria. The District will receive approximately \$72 million of Required Local Effort (3.715 mills), which is required by the state to be levied to receive approximately \$132.1 million in state funding. The supplementary discretionary millage of 0.748 mills will provide \$14.5 million.

Overall property taxes decreased as the Required Local Effort millage rate decreased by 0.204 mills, however, the assessed property value increased \$1.1 billion, resulting in the \$1.2 million increase. These property taxes support day-to-day operational expenses of the school district and the amounts are budgeted at 96% of total Ad Valorem taxes. This is a Department of Education requirement for all Florida school district budgeting.

OTHER LOCAL SOURCES - included in this category are earnings on investments, indirect costs, course fees and miscellaneous other revenues.

STATE SOURCES

FLORIDA EDUCATION FINANCE PROGRAM (FEFP)

The total FEFP revenue is \$204 million, funded with state (\$132 million) and local property tax required local effort (\$72 million).

CATEGORICALS AND OTHERS

A “Categorical” in FEFP jargon is an appropriation of revenue that can be spent only for a specified purpose. This source represents funding for instructional materials, transportation, Pre-K education, state license tax, class size reduction, Teacher Salary Allocation and other special categories totaling \$50 million. It should be noted that Safe School Programs, Supplemental Academic Instruction, Transportation, Teachers Lead, Digital Classrooms, and the Reading Instruction program were funded by the Legislature for 2020-2021 as quasi-categorical program within the FEFP funds. They are treated the same as categoricals because the funds must be spent for the specific purposes defined by each program.

FEDERAL SOURCES

The projection of \$300 thousand for this category is based partially on prior year funding derived from \$250 thousand for ROTC, and \$50 thousand for National Forest Funds.

FISCAL YEAR 2020-2021 BUDGET EXPENDITURES

When compared to the actual expenditures in fiscal year 2019-2020 (\$281.2 million), budgeted expenditures for fiscal year 2020-2021 (\$314.5 million) have increased by \$33.3 million (12%).

(Note: Percentages in the following discussion are the percent increases of each amount over the previous year actual amount.)

The increase is primarily in the Instruction function \$28.7 million (17%). The other functional increases include \$8 thousand for Instructional Media (.2%); Instruction Related Technology \$432 thousand (17%); \$1.1 million for Instructional Staff Training (237%); \$255 thousand in General Administration and Board related expenditures (22%); \$304 thousand in Facilities Acquisition and Construction (19%); \$2.5 million in Central Services (32%); \$1 million in Operation and Maintenance of Plant (5%); Pupil Transport Services \$914 thousand (7%); and \$1.8 million in Community Services (38%). Total increases are \$37 million.

Decreases consist of Pupil Personnel Services -\$1.1 million (-11%); Instruction and Curriculum Development Services -\$2 million (-32%); School Administration -\$102 thousand (-.4%); -\$322 thousand for Administrative Technology Services (-6%); and Fiscal Services -\$249 thousand (-10%). Total decreases are \$3.8 million.

MAJOR BUDGET ASSUMPTIONS - The overall assumptions used for development of expenditure estimates are derived from the Board Goals, School Improvement plans, objectives and strategies, State mandated curriculum requirements, enrollment projections, long-range plan priorities, fixed costs and other operational priorities. In the discussion that follows, major budget assumptions are presented by object of expenditures.

SALARIES - The budget for salaries is influenced by a combination of factors such as:

- A. School Site Salaries - Comprised of teachers, teacher aides, principals and assistant principals, other instructional support staff, secretarial, clerical and custodial. Expenditures in this category are budgeted based on projected enrollment and required positions identified by the Principals, Executive Directors, and Assistant Superintendents. Average salary by job type is used to compute budgeted dollars.
- B. Non-School Site Salaries - Comprised of instructional support personnel – administrative, secretarial, clerical, and service technicians – budgets in this category are developed based on justification of need and represent actual salaries based on Board approved salary schedules.
 - i. Vacancies and/or requests for new positions are evaluated to assess costs, benefits, and applicability to classroom support.

- C. Fringe Benefits - Retirement and Social Security are based on published rates and applied to each calculated unit and/or position. Non-retirement benefits are based on historical enrollment and/or the number of budgeted positions. Health insurance costs are calculated based on actual participation rates, actual Board costs, and converted to a standard per employee health cost.
- D. Purchased Services - Expenditures in this category represent a combination of fixed and variable cost components.
 - i. Fixed Costs - Labeled fixed costs due to the nature of the items involved – utilities, insurance and certain contracted services – the requirement for resources is determined by factors normally outside the School Board’s control. The budget is based on historical trends adjusted for estimated effects of inflation on contracts, and actual rates for insurance.
 - ii. Other Purchased Services - Excluding the fixed or mandated costs above, the remainder of purchased services represents requested uses of per pupil allocations to schools for administrative and departmental operating costs.
- E. Supplies and Materials - Included in this category are textbook allocations funded by the State. These funds also include the supply money given to schools for distribution to teachers to support their classroom educational activities. The beginning of the school year coincides with several other statutory financial requirements. As a result, adopted budget allocations in this category also include school “flex” or operating budget allocations, which schools will transfer to other categories (excluding salaries and benefits) through the budget amendment process as needed throughout the year.
- F. Capital Outlay - Total funds in this category represent requested uses of per pupil allocations to schools and approved support department requests. Because of the increase in computer technology and related software, a large portion of the budget is allocated for these needs.
- G. Other Expenditures - The budget for this category is primarily for school accreditation expenses, miscellaneous uses of per pupil allocations for schools, and system-wide fees such as bank fees and other expenses.
- H. Inter-Fund Transfers - Comprised of transfers between funds, such as the money transferred from capital outlay to the operating budget to pay off lease-purchase obligations.

SUMMARY STATEMENTS OF OPERATING BUDGET: KEY POINTS OF INTEREST

- The instructional staffing plan (\$173.1 million) is approximately 52% of the General Fund budget.
- The instructional staffing plan used to allocate resources to the schools is based on an average teacher salary and full benefits of \$60,820.31.
- The General Operating Fund of \$334.7 million pays for day-to-day costs and represents 63% of the total district budget of \$528 million.
- The total budgeted general fund operating dollars expended for salaries and benefits (\$234.2 million) are 74.5% of budgeted expenditures. The actual percentage expended in FY 2020 was 80.5% (\$226.3 million).

GENERAL FUND ESTIMATED APPROPRIATIONS AND BALANCES

2020-2021

REVENUES	2018-2019 ACTUAL	2019-2020 ACTUAL	2020-2021 ESTIMATED	DIFFERENCE 19-20 vs 20-21
Federal	\$315,972.98	\$541,538.36	\$299,721.30	(\$241,817.06)
State Sources	\$175,683,175.23	\$178,249,921.94	\$180,735,689.97	\$2,485,768.03
Local Sources	\$98,317,003.65	\$98,362,654.61	\$94,422,812.64	(\$3,939,841.97)
TOTAL REVENUES	\$274,316,151.86	\$277,154,114.91	\$275,458,223.91	(\$1,695,891.00)
Transfers In	\$7,043,932.00	\$5,787,265.00	\$7,499,716.00	\$1,712,451.00
Non-Revenue Sources	\$0.00	\$0.00	\$0.00	\$0.00
Fund Balances - July 1, 2020	\$51,128,766.64	\$50,574,403.26	\$51,723,052.92	\$1,148,649.66
TOTAL REVENUE & BALANCES	\$332,488,850.50	\$333,515,783.17	\$334,680,992.83	\$1,165,209.66
APPROPRIATIONS (Expenditures)				
Instruction	\$164,661,268.35	\$164,218,338.48	\$192,936,322.20	\$28,717,983.72
Pupil Personnel Services	\$10,443,926.94	\$10,119,817.27	\$9,031,343.39	(\$1,088,473.88)
Instructional Media Services	\$3,659,149.33	\$4,175,408.00	\$4,184,034.88	\$8,626.88
Instructional & Curriculum				
Development Services	\$6,379,723.62	\$6,422,675.63	\$4,374,725.39	(\$2,047,950.24)
Instructional Staff Training	\$585,118.91	\$478,573.31	\$1,611,715.38	\$1,133,142.07
Instructional Related Technology	\$3,586,686.92	\$2,553,214.20	\$2,985,265.39	\$432,051.19
Board of Education	\$1,567,727.85	\$1,139,534.12	\$1,424,864.35	\$285,330.23
General Administration	\$1,124,777.52	\$1,178,669.21	\$1,148,555.11	(\$30,114.10)
School Administration	\$22,916,642.55	\$23,257,334.29	\$23,154,881.27	(\$102,453.02)
Facilities Acquisition and Construction	\$1,617,016.75	\$1,588,351.95	\$1,892,542.43	\$304,190.48
Fiscal Services	\$2,668,360.59	\$2,492,430.34	\$2,243,007.06	(\$249,423.28)
Food Services	\$0.00	\$0.00	\$0.00	\$0.00
Central Services	\$7,026,827.45	\$8,120,820.05	\$10,689,068.14	\$2,568,248.09
Pupil Transportation System	\$14,517,281.12	\$12,527,451.11	\$13,441,813.01	\$914,361.90
Operation of Plant	\$19,923,748.42	\$23,443,007.38	\$24,190,603.39	\$747,596.01
Maintenance of Plant	\$10,292,522.88	\$9,941,998.20	\$10,168,326.06	\$226,327.86
Administrative Technology Services	\$5,103,706.21	\$4,981,164.47	\$4,656,760.92	(\$324,403.55)
Community Services	\$5,839,961.83	\$4,603,942.24	\$6,365,079.45	\$1,761,137.21
Debt Services	\$0.00	\$550,000.00	\$2,619,058.56	\$2,069,058.56
TOTAL APPROPRIATIONS	\$281,914,447.24	\$281,792,730.25	\$317,117,966.38	\$35,325,236.13
Transfers Out	\$0.00	\$0.00	\$0.00	\$0.00
Ending Fund Balances - June 30, 2021	\$50,574,403.26	\$51,723,052.92	\$17,563,026.45	(\$34,160,026.47)
TOTAL APPRS, TRSFRS & BALANCES	\$332,488,850.50	\$333,515,783.17	\$334,680,992.83	\$1,165,209.66

ANALYSIS OF GENERAL OPERATING REVENUES AND EXPENDITURES

A comparative analysis for revenues from 2019-2020 through the 2020-2021 budget year is located on page 23. This sheet illustrates the sources and percentages of local, state, and federal revenues in the General Operating Fund. Ad Valorem Taxes are 92% of the total General Operating Fund local revenues budgeted in FY 2021, and averaged 87% over the last several years. State revenues funded within the FEPF including categoricals accounts for 96.4% of Leon County School total state budgeted revenues this year, and averages 95% of actual revenues by the end of each fiscal year over the years depicted.

Fiscal year 2020 total revenues and transfers are \$283 million. Federal Sources are 0.11%. State sources are 64%, local sources are 33%, and transfers from Capital Outlay are 3%.

GENERAL FUND ESTIMATED REVENUES

2020-2021

REVENUE NAME	ORIGINAL EST. 2019-2020	ACTUAL 2019-2020	ORIGINAL EST. 2020-2021	DIFFERENCE INCRS/ (DECRS) 2019-20 vs. 2020-21
FEDERAL DIRECT:				
Reserve Officers Training Corps.	\$265,000.00	\$293,055.50	\$249,721.30	(\$43,334.20)
Miscellaneous	\$0.00	\$199,979.50	\$0.00	(\$199,979.50)
TOTAL FEDERAL DIRECT	\$265,000.00	\$493,035.00	\$249,721.30	(\$243,313.70)
FEDERAL THROUGH STATE				
National Forest Funds	\$50,000.00	\$48,503.36	\$50,000.00	\$1,496.64
TOTAL FEDERAL THRU STATE	\$315,000.00	\$541,538.36	\$299,721.30	(\$241,817.06)
STATE:				
Florida Education Finance Program	\$108,427,626.00	\$104,255,258.53	\$108,386,640.00	\$4,131,381.47
Supplemental Academic Instruction	\$9,905,688.00	\$9,790,476.00	\$9,800,029.00	\$9,553.00
Safe Schools	\$2,771,626.00	\$2,776,626.00	\$2,664,009.00	(\$112,617.00)
Reading Instruction	\$1,524,137.00	\$1,506,055.00	\$1,493,696.00	(\$12,359.00)
Mental Health Assistance	\$922,404.00	\$912,552.00	\$1,202,705.00	\$290,153.00
Turnaround Supplemental Services	\$680,327.00	\$638,134.00	\$716,210.00	\$78,076.00
Teacher Salary Increase Allocation	\$0.00	\$0.00	\$5,674,112.00	\$5,674,112.00
Best and Brightest	\$3,314,024.00	\$3,314,024.00	\$0.00	(\$3,314,024.00)
Class Size Reduction	\$36,843,972.00	\$36,416,756.00	\$36,512,890.00	\$96,134.00
Workforce Development	\$6,322,703.00	\$6,322,703.00	\$6,322,703.00	\$0.00
Adult Handicapped	\$225,000.00	\$225,000.00	\$0.00	(\$225,000.00)
Digital Classroom	\$272,736.00	\$272,544.00	\$108,327.00	(\$164,217.00)
Workforce Performance Incentive	\$0.00	\$259,000.00	\$0.00	(\$259,000.00)
Lottery Enhancement Allocation	\$114,343.00	\$33,474.00	\$0.00	(\$33,474.00)
CO&DS Withheld for Administration	\$20,324.97	\$20,324.97	\$20,324.97	\$0.00
Instructional Materials	\$2,710,634.00	\$2,633,918.00	\$2,647,261.00	\$13,343.00
State License Tax	\$50,000.00	\$48,502.40	\$50,000.00	\$1,497.60
Transportation	\$4,775,027.00	\$4,421,451.00	\$4,467,095.00	\$45,644.00
School Recognition Funds	\$1,370,588.00	\$2,037,608.00	\$0.00	(\$2,037,608.00)
Voluntary Pre-Kindergarten	\$350,000.00	\$536,921.42	\$0.00	(\$536,921.42)
Florida Teachers Lead Program	\$657,721.00	\$657,721.00	\$644,058.00	(\$13,663.00)
Miscellaneous State Sources	\$25,630.00	\$1,170,872.62	\$25,630.00	(\$1,145,242.62)
TOTAL STATE	\$181,284,510.97	\$178,249,921.94	\$180,735,689.97	\$2,485,768.03
LOCAL:				
District School Tax (includes Disc./RLE)	\$85,213,564.00	\$85,386,862.06	\$86,493,961.00	\$1,107,098.94
Tax Redemption	\$125,000.00	\$73,120.60	\$75,000.00	\$1,879.40
Course Fees (Adult Vocational)	\$600,000.00	\$1,945,418.53	\$600,000.00	(\$1,345,418.53)
School Age Child Care Fees	\$5,821,000.00	\$4,527,973.63	\$4,354,500.00	(\$173,473.63)
Preschool Program Fees	\$459,500.00	\$303,878.57	\$247,000.00	(\$56,878.57)
Interest, Incl. Profit on Investments	\$2,000,000.00	\$977,492.61	\$1,025,000.00	\$47,507.39
Federal Indirect Cost	\$1,200,000.00	\$1,131,298.27	\$1,200,000.00	\$68,701.73
Miscellaneous	\$430,678.56	\$4,016,610.34	\$427,351.64	(\$3,589,258.70)
TOTAL LOCAL	\$95,849,742.56	\$98,362,654.61	\$94,422,812.64	(\$3,939,841.97)
TOTAL FEDERAL/ STATE/ LOCAL	\$277,449,253.53	\$277,154,114.91	\$275,458,223.91	(\$1,695,891.00)
TRANSFERS				
From Capital Projects Funds	\$5,507,099.00	\$5,787,265.00	\$7,499,716.00	\$1,712,451.00
From Debt Service	\$0.00	\$0.00	\$0.00	\$0.00
TOTAL TRANSFERS:	\$5,507,099.00	\$5,787,265.00	\$7,499,716.00	\$1,712,451.00
TOTAL REVENUE/ TRANSFERS	\$282,956,352.53	\$282,941,379.91	\$282,957,939.91	\$16,560.00
FUND BALANCE:				
Reserve for Encumbrance	\$1,345,367.49	\$1,345,367.49	\$493,444.90	(\$851,922.59)
Reserve for Inventory	\$1,190,691.87	\$1,190,691.87	\$1,203,157.51	\$12,465.64
Restricted	\$18,064,545.19	\$18,064,545.19	\$19,450,406.30	\$1,385,861.11
Restricted for Emergency Fund Balance	\$5,000,000.00	\$5,000,000.00	\$5,000,000.00	\$0.00
Unrestricted	\$24,160,256.23	\$24,160,256.23	\$25,576,044.21	\$1,415,787.98
TOTAL FUND BALANCE	\$49,760,860.78	\$49,760,860.78	\$51,723,052.92	\$1,962,192.14
TOTAL EST REVENUE/ TRFRS/ FUND BAL	\$332,717,213.31	\$332,702,240.69	\$334,680,992.83	\$1,978,752.14

GENERAL ESTIMATED APPROPRIATIONS

2020-2021

	ORIGINAL 2019-2020	% OF TOTAL	ESTIMATED 2020-2021	% OF TOTAL
STAFFING PLAN (ITEM 1)	\$176,358,328.34	53.01%	\$173,100,203.82	51.72%
WORKFORCE DEVELOPMENT (ITEM 2)	\$7,147,703.00	2.15%	\$6,922,703.00	2.07%
DISTRICT WIDE INSURANCES (ITEM 3)	\$4,961,734.00	1.49%	\$4,875,000.00	1.46%
CHARTER SCHOOLS (ITEM 4)	\$12,300,231.00	3.70%	\$16,319,582.00	4.88%
MCKAY & FAMILY EMPOWERMENT SCHOLARSHIPS (ITEM 5)	\$2,500,000.00	0.75%	\$3,500,000.00	1.05%
DISTRICT COST CENTERS	\$36,280,560.60	10.91%	\$33,246,987.58	9.93%
CONTRACTED/MISCELLANEOUS SERVICES (ITEM 6)	\$2,386,567.65	0.72%	\$1,773,237.50	0.53%
CATEGORICALS/GRANTS (ITEM 7)	\$12,546,425.33	3.77%	\$12,230,116.38	3.65%
OTHER (ITEM 8)	\$23,467,362.92	7.05%	\$21,013,931.12	6.28%
ENERGY/UTILITIES (ITEM 9)	\$9,542,440.00	2.87%	\$9,542,440.00	2.85%
RESTRICTED CARRY FORWARD PROJECTS	\$18,064,545.19	5.43%	\$19,450,406.30	5.81%
CARRY FORWARD ENCUMBRANCES	\$1,345,367.49	0.40%	\$493,544.90	0.15%
MISCELLANEOUS BUDGET ITEMS (ITEM 10)	\$2,443,163.70	0.73%	\$12,615,494.00	3.77%
DISTRICTWIDE PROJECTS	\$0.00	0.00%	\$2,035,563.29	0.61%
EMERGENCY FUND BALANCE	\$5,000,000.00	1.50%	\$5,000,000.00	1.49%
BALANCE FOR INVENTORIES	\$1,190,691.87	0.36%	\$1,203,157.51	0.36%
UNRESTRICTED FUND BALANCE	\$17,156,462.22	5.16%	\$11,358,625.43	3.39%
GRAND TOTAL	\$332,691,583.31	100.00%	\$334,680,992.83	100.00%

GENERAL ESTIMATED APPROPRIATIONS EXHIBITS

2020-2021

	ESTIMATED 2019-20 ALLOCATION	ESTIMATED 2020-21 ALLOCATION
1 STAFFING PLAN		
COST OF PLAN(INCLUDES HEALTH INS AND RETIREMENT RATE INCREASES)	\$139,156,726.88	\$136,502,790.82
CLASS SIZE REDUCTION FUNDS:		
2019-20 CLASS SIZE FUNDS		
ALL SCHOOLS	\$34,923,190.00	\$33,997,413.00
TOTAL ALL SCHOOLS	\$34,923,190.00	\$33,997,413.00
TOTAL CLASS SIZE REDUCTION	\$34,923,190.00	\$33,997,413.00
STAFFING PLAN RESERVE	\$1,350,000.00	\$2,000,000.00
EXTENDED YEAR SERVICES	\$700,000.00	\$600,000.00
ELEMENTARY & MIDDLE SCHOOLS FREE & REDUCED	\$300,000.00	\$0.00
300 LOWEST PERFORMING ELEMENTARY SCHOOLS	\$300,000.00	\$0.00
TOTAL	\$176,729,916.88	\$173,100,203.82
2 ADULT WORKFORCE DEVELOPMENT		
WORKFORCE DEVELOPMENT	\$6,322,703.00	\$6,322,703.00
WORKFORCE ADULT COURSE FEES	\$600,000.00	\$600,000.00
ADULTS WITH DISABILITIES	\$225,000.00	\$0.00
TOTAL	\$7,147,703.00	\$6,922,703.00
3 DISTRICT WIDE INSURANCES		
PROPERTY AND CASUALTY	\$1,660,210.00	\$1,700,000.00
WORKERS COMPENSATION	\$1,900,000.00	\$2,350,000.00
UNEMPLOYMENT COMPENSATION	\$150,000.00	\$75,000.00
RESERVE FOR PROPERTY AND CASUALTY	\$1,251,524.00	\$750,000.00
TOTAL	\$4,961,734.00	\$4,875,000.00
4 CHARTER SCHOOLS	\$8,700,451.00	\$11,534,855.00
CLASS SIZE REDUCTION	\$1,920,782.00	\$2,515,447.00
SAI ALLOCATION	\$476,701.00	\$626,739.00
INSTRUCTIONAL MATERIALS	\$125,417.00	\$162,722.00
READING FUNDS	\$72,990.00	\$92,974.00
DIGITAL CLASSROOM	\$13,126.00	\$6,924.00
SAFE SCHOOLS FUNDS	\$133,381.00	\$176,742.00
TEACHER SALARY	\$0.00	\$353,179.00
PECO TRANSFER	\$857,383.00	\$850,000.00
TOTAL	\$12,300,231.00	\$16,319,582.00
5 MCKAY SCHOLARSHIPS	\$2,500,000.00	\$1,750,000.00
FAMILY EMPOWERMENT SCHOLARSHIPS	0.00	\$1,750,000.00
TOTAL	2,500,000.00	\$3,500,000.00

	ESTIMATED 2019-20 ALLOCATION	ESTIMATED 2020-21 ALLOCATION
6 CONTRACTED/MISCELLANEOUS SERVICES		
LEGAL FEES	\$750,000.00	\$525,000.00
EXTENDED SCHOOL YEAR TRANSPORTATION	\$290,300.00	\$88,237.50
INTERNET CONNECTIVITY (INSTRUCTIONAL TECHNOLOGY)	\$900,000.00	\$1,000,000.00
CPA FIRM AUDITS	\$0.00	\$160,000.00
TOTAL	\$1,940,300.00	\$1,773,237.50
7 CATEGORICALS/GRANTS		
INSTRUCTIONAL MATERIALS	\$2,585,217.00	\$2,484,539.00
RESERVE FOR TEXTBOOK ADOPTIONS	\$500,000.00	\$0.00
TEACHER LEAD PROGRAM	\$657,721.00	\$644,058.00
READING INSTRUCTION	\$1,451,147.00	\$1,400,724.00
DIGITAL CLASSROOMS	\$259,610.00	\$101,403.00
TEC TRAINING FUNDS	\$336,044.33	\$333,914.38
SCHOOL RECOGNITION FUNDS	\$1,370,588.00	\$0.00
SCHOOL IMPROVEMENT	\$114,343.00	\$0.00
VOLUNTEER PRE-KINDERGARTEN	\$350,000.00	\$0.00
BEST AND BRIGHTEST	\$3,314,024.00	\$0.00
TEACHER SALARY	\$0.00	\$5,320,933.00
TURNAROUND SUPPLEMENTAL SERVICES	\$680,327.00	\$716,210.00
FDLRS GENERAL 2020-21	\$25,630.00	\$25,630.00
MENTAL HEALTH ASSISTANCE	\$927,404.00	\$1,202,705.00
TOTAL	\$12,572,055.33	\$12,230,116.38
8 OTHER		
TERMINAL PAY	\$1,613,700.00	\$1,613,700.00
ADVANCE PLACEMENT FUNDS	\$1,760,817.00	\$1,876,563.00
I.B. FUNDS	\$244,180.00	\$199,293.00
INDUSTRY CERTIFIED CAREER ED	\$723,187.00	\$999,958.25
INSTRUCTIONAL TECHNOLOGY	\$309,000.00	\$309,000.00
SUPPLEMENTS	\$2,795,912.97	\$2,832,651.99
DIFFERENTIATED PAY SUPPLEMENTS	\$261,270.00	\$264,712.50
SCHOOL RESOURCE OFFICERS CONTRACT	\$2,027,224.00	\$1,422,001.38
SAFETY OFFICERS AT ELEMENTARY SCHOOLS	\$1,060,000.00	\$1,060,000.00
DAYCARE FEES	\$459,500.00	\$247,000.00
SCHOOL AGE CHILD CARE FEES	\$5,762,790.00	\$4,354,500.00
ARTS PROGRAMS	\$500,000.00	\$250,000.00
STUDENT ACTIVITIES	\$500,000.00	\$250,000.00
GREG BURRIS DRIVER ED FUND	\$84,835.00	\$84,835.00
EM/PM TRANSFER	\$3,649,716.00	\$4,949,716.00
LEON VIRTUAL SCHOOLS	\$300,000.00	\$300,000.00
TOTAL	\$22,052,131.97	\$21,013,931.12

	ESTIMATED 2019-20 ALLOCATION	ESTIMATED 2020-21 ALLOCATION
9 UTILITIES		
TELEPHONE	\$255,000.00	\$255,000.00
WATER	\$297,557.74	\$297,557.74
SEWAGE	\$584,634.08	\$584,634.08
GARBAGE	\$517,547.77	\$517,547.77
STORM WATER	\$559,577.54	\$559,577.54
FIRE SERVICE FEE	\$848,386.83	\$848,386.83
NATURAL GAS	\$631,185.51	\$631,185.51
LP GAS	\$110,587.20	\$110,587.20
ELECTRIC	\$5,723,138.91	\$5,723,138.91
FUEL OIL	\$14,824.42	\$14,824.42
TOTAL	\$9,542,440.00	\$9,542,440.00
 10 MISCELLANEOUS BUDGET ITEMS		
DJJ/CONTRACTED PROGRAMS	\$1,153,163.70	\$805,494.00
BLOODBORNE PATHOGENS	\$10,000.00	\$10,000.00
HIGH SCHOOL DUAL ENROLLMENT	\$225,000.00	\$200,000.00
RESERVE FOR TEACHER SALARY NEGOTIATIONS	\$0.00	\$4,600,000.00
RESERVE FOR POTENTIAL BUDGET REDUCTIONS	\$0.00	\$6,000,000.00
RESERVE FOR FTE AUDIT FINDINGS	\$1,000,000.00	\$1,000,000.00
TOTAL	\$2,388,163.70	\$12,615,494.00

GENERAL FUND NARRATIVE OF EXPENDITURE APPROPRIATION DIFFERENCES FINAL BUDGET FISCAL YEAR ENDING JUNE 30, 2021

The entire General Fund Budget is \$334.7 million. The following General Fund Exhibits items on pages 25-27 are highlighted with discussion of differences between last year and this year.

The FY 2021 Staffing Plan of \$173.1 million is \$3.3 million less than the original adopted Staffing Plan in FY 2020. This decrease is offset by the increase to Charter Schools discussed below.

“Florida Student Assistance Grant (FSAG)” under Adult Workforce Development is budgeted at the same level as the prior year. The FSAG Program is a need-based grant program available to degree-seeking resident, undergraduate students who demonstrate substantial financial need and are enrolled in participating postsecondary institutions.

“District Wide Insurances” have decreased \$250 thousand from \$4.96 million to \$4.88 million. Based on prior year expenditures the budget allocation for Worker’s Compensation increased by \$450 thousand, Unemployment Compensation decreased by \$75 thousand, and the reserve for property and casualty decreased by \$500 thousand.

“Charter Schools in FY 2019-2020 was \$12.3 million. It will be \$16.3 million in FY 2020-2021, an increase of \$4 million resulting from the opening of Tallahassee Classical School and the expansion of Tallahassee School of Math and Science.

“McKay Scholarships and Family Empowerment Scholarships” are expected to increase to \$3.5 million, a \$1 million increase over the amount budgeted in FY 2019-2020.

“Contracted/Miscellaneous Services” decreased \$167 thousand. Major changes included Board legal fees decreasing by \$225 thousand, from \$750 thousand to \$525 thousand. Extended school year transportation decreased by \$202 thousand and Internet connectivity for instructional technology increased by \$100 thousand to \$1 million.

“Reserve for Textbook Adoptions” decreased by \$500 thousand as a result of the move to a three year replacement cycle by Academic Services. The replacement cycle utilizes the same original allocation, however expenditures will occur over three years.

“Digital Classrooms” decreased by \$158 thousand, continuing the pattern of the last several years of moving to eliminate this categorical.

“School Recognition Funds” were vetoed by the Governor as a result of school grades not being calculated for Fiscal Year 2019-2020.

“Teacher Salary Increase Allocation” is funded at \$5.7 million. This new categorical within the FEFP is restricted for increasing the minimum base salary of teachers and replaced the Best and Brightest bonus program.

“Turnaround Supplemental Services” are funded at \$716 thousand. This categorical was created by the legislature during the 2019 Legislative session. The categorical allocates \$500 per FTE for schools based on school grades from the prior year. Since there were no school grades calculated for 2019-2020 several schools remained in turnaround status. Funds are to offer services designed to improve the overall academic and community welfare of the school’s students and families.

“Volunteer Pre-Kindergarten” funding estimates were not yet available as a result of COVID-19, however we anticipate the funds received will reflect an amount similar to the actual amount received in FY 2019-2020.

“Mental Health Assistance” funds increased \$275 thousand, from \$927 thousand to \$1.2 million.

“Advanced Placement Funds” of \$1.9 million increased \$116 thousand. This funding is received when students pass advanced placement tests.

“I.B. Funds” of \$199 thousand decreased by \$45 thousand. This funding is received when International Baccalaureate (I.B.) students pass the courses or pass the final I.B. tests.

“Industry Certified Career Ed” under “Other” increased from \$723 thousand in FY 2019-2020 to \$1 million in FY 2020-2021 because the District has more students who qualified for this allocation.

“School Resource Officers Contract” for \$1.4 million decreased \$605 thousand. This decrease is a result of the contract no longer providing relief for officers who are sick or on leave. These costs were shifted to the School Safety Officer contract. The total cost for the contract is \$2.8 million. LCS shares the cost of this program with the Leon County Sheriff’s Office.

“Safety Officers at Schools” is funded \$1 million. It pays for deputies to cover elementary schools and other schools not covered by the Leon County Sheriff contract.

“School Age Childcare Fees” at \$4.4 million decreased \$1.4 million. These are fees generated from the before and after school program.

The “EM/PM” transfer of \$4.9 million under “Other” is for Emergency Maintenance and Preventive Maintenance. These are 1.5 mill funds transferred to the General Fund for EM/PM.

“Leon Virtual Schools” under “Other” budget is \$300 thousand in FY 2020-2021, the same as FY 2019-2020. This budget is for contracts with virtual schools outside of the District.

Overall “Utilities” are budgeted at \$9.5 million same as during the previous year.

“Restricted Carry Forward Fund Balance” of \$19.5 million increased \$1.4 million.

“Carry Forward Encumbrances of \$493 thousand is \$851 thousand less than the amount budgeted in FY 2019-2020.

“Bloodborne Pathogens” under “Miscellaneous Budget Items” is budgeted at the same level as prior years and is used to pay for vaccinations that custodians must have for protection against Hepatitis.

“High School Dual Enrollment” budget of \$200 thousand under “Miscellaneous Budget Items” is the amount budgeted for the dual enrollment contracts.

“Reserve for Teacher Salary and Other Negotiations” \$4 million of these funds were set aside based on previous negotiations to help resolve compression issues created by House Bill 641 and raising the classroom teacher minimum base pay for teachers making under \$47,500. These funds will help to ensure all our teachers are compensated for their work and dedication.

“Reserve for Potential Budget Reductions” is a 6% holdback on the District’s portion of the State funded FEFP and mirrors the holdback currently imposed on State Agencies by the Governor in preparation for Special Session/Session reductions.

“Reserve for FTE Audit Findings” within “Miscellaneous Budget Items” is reserved for any FTE audit issues.

Unrestricted Fund Balance (\$11.4 million) is for illustrating the amount required to demonstrate compliance with Florida Statute 1011.051 that 3% of General Fund revenues must be in unrestricted fund balance. The sum of this category and the Emergency Reserve amount of \$5 million provides \$16.4 million to meet the statutory requirements of 3 percent, which is 4.9 percent. “Unallocated Funds” in this category represents the amount that is not reserved for any specific purpose. The other amounts are actually reserved for those specific purposes, but are recognized by the Department of Education as being available for the 3 percent requirement because the Board can choose to use these funds to offset a financial emergency, such as a natural disaster or a midyear statewide budget reduction which occurred in 2008 and 2009.

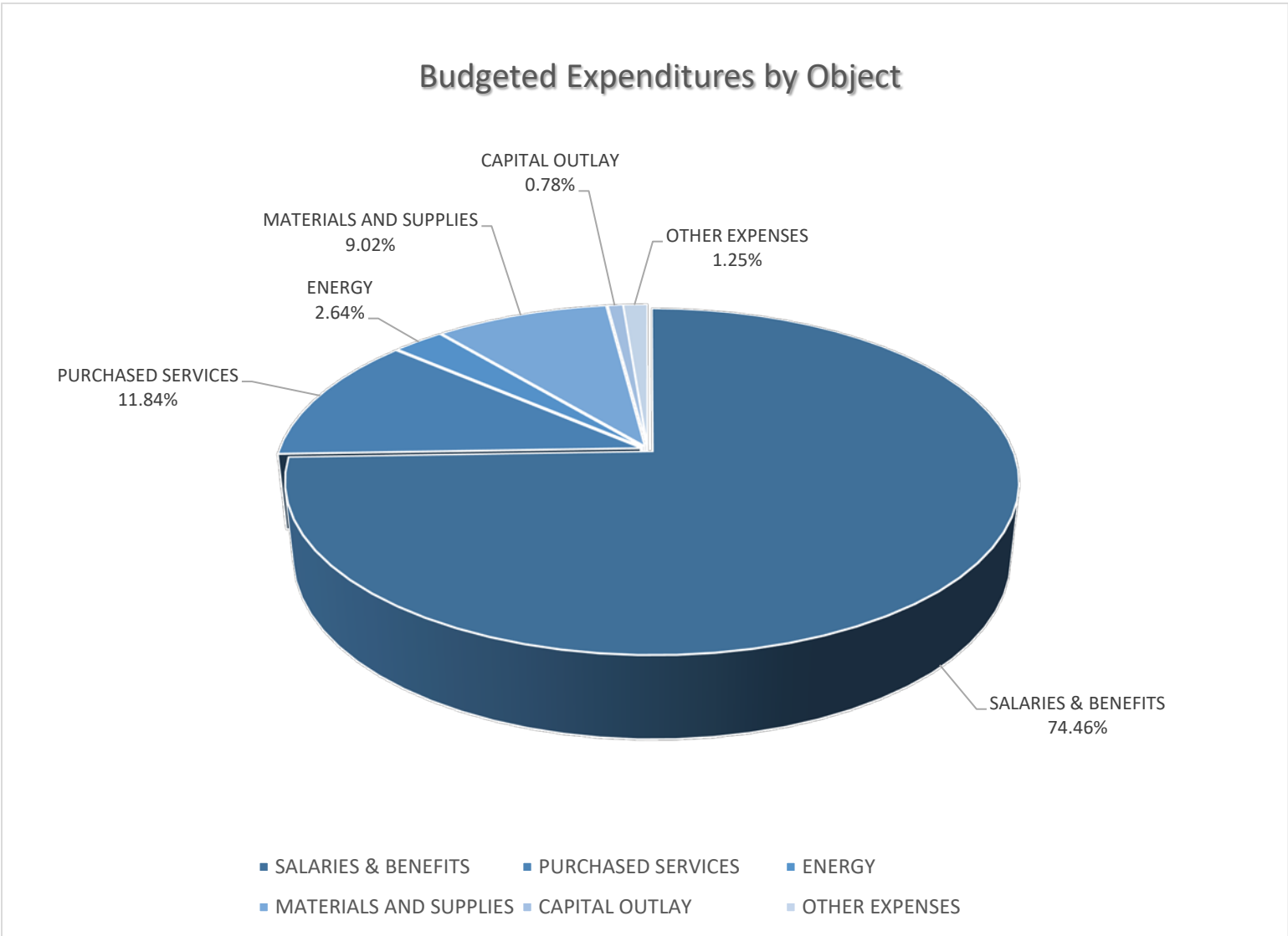
COMPARATIVE ANALYSIS OF BUDGETED EXPENDITURES BY FUNCTION GROUPING
GENERAL FUND 2020-2021

APPROPRIATIONS (Expenditures):	2018-2019 ACTUAL	2019-2020 ACTUAL	2020-2021 PROPOSED	INCREASE/ (DECREASE)
INSTRUCTION	\$164,661,268.35	\$164,218,338.48	\$192,936,322.20	\$28,717,983.72
PUPIL PERSONNEL SERVICES	\$10,443,926.94	\$10,119,817.27	\$9,031,343.39	(\$1,088,473.88)
INSTRUCTIONAL MEDIA SERVICES	\$3,659,149.33	\$4,175,408.00	\$4,184,034.88	\$8,626.88
INSTRUCTION & CURRICULUM DEVELOPMENT SERVICES	\$6,379,723.62	\$6,422,675.63	\$4,374,725.39	(\$2,047,950.24)
INSTRUCTIONAL STAFF TRAINING	\$585,118.91	\$478,573.31	\$1,611,715.38	\$1,133,142.07
INSTRUCTIONAL TECHNOLOGY	\$3,586,686.92	\$2,553,214.20	\$2,985,265.39	\$432,051.19
BOARD OF EDUCATION	\$1,567,727.85	\$1,139,534.12	\$1,424,864.35	\$285,330.23
GENERAL ADMINISTRATION	\$1,124,777.52	\$1,178,669.21	\$1,148,555.11	(\$30,114.10)
SCHOOL ADMINISTRATION	\$22,916,642.55	\$23,257,334.29	\$23,154,881.27	(\$102,453.02)
FACILITIES ACQUISITION & CONSTRUCTION	\$1,617,016.75	\$1,588,351.95	\$1,892,542.43	\$304,190.48
FISCAL SERVICES	\$2,668,360.59	\$2,492,430.34	\$2,243,007.06	(\$249,423.28)
FOOD SERVICES	\$0.00	\$0.00	\$0.00	\$0.00
CENTRAL SERVICES	\$7,026,827.45	\$8,120,820.05	\$10,689,068.14	\$2,568,248.09
PUPIL TRANSPORTATION SYSTEM	\$14,517,281.12	\$12,527,451.11	\$13,441,813.01	\$914,361.90
OPERATION OF PLANT	\$19,923,748.42	\$23,443,007.38	\$24,190,603.39	\$747,596.01
MAINTENANCE OF PLANT	\$10,292,522.88	\$9,941,998.20	\$10,166,326.06	\$224,327.86
ADMINISTRATIVE TECHNOLOGY	\$5,103,706.21	\$4,981,164.47	\$4,658,760.92	(\$322,403.55)
COMMUNITY SERVICES	\$5,839,961.83	\$4,603,942.24	\$6,365,079.45	\$1,761,137.21
DEBT SERVICE	\$0.00	\$0.00	\$0.00	\$0.00
TOTAL APPROPRIATIONS (Expenditures)	\$281,914,447.24	\$281,242,730.25	\$314,498,907.82	\$33,256,177.57
TRANSFERS OUT	\$0.00	\$550,000.00	\$2,619,058.56	\$2,069,058.56
ENDING FUND BALANCES - June 30, 2021	\$50,574,403.26	\$51,723,052.92	\$17,563,026.45	(\$34,160,026.47)
TOTAL APPRS/TRFRS/FUND BALANCES	\$332,488,850.50	\$333,515,783.17	\$334,680,992.83	\$1,165,209.66

**COMPARATIVE ANALYSIS OF BUDGETED EXPENDITURES BY OBJECT GROUPING
GENERAL FUND 2020-2021**

ESTIMATED APPROPRIATIONS	2018-2019	% OF TOTAL ACTUAL BUDGET (APPRS)	2019-2020	% OF TOTAL ACTUAL BUDGET (APPRS)	2020-2021	% OF TOTAL ACTUAL BUDGET (APPRS)
	ACTUAL	2018-2019	ACTUAL	2019-2020	PROPOSED	2020-2021
MAJOR OBJECTS:						
SALARIES	\$171,855,805.60	60.96%	\$175,300,568.96	62.21%	\$178,198,222.78	56.19%
BENEFITS	\$50,226,820.02	17.82%	\$50,958,480.39	18.08%	\$55,991,366.37	17.66%
PURCHASED SERVICES	\$33,066,017.64	11.73%	\$31,982,193.00	11.35%	\$37,250,801.58	11.75%
ENERGY	\$8,267,565.72	2.93%	\$7,330,741.56	2.60%	\$8,297,940.00	2.62%
MATERIALS AND SUPPLIES	\$9,152,140.89	3.25%	\$7,736,024.18	2.75%	\$28,366,489.32	8.95%
CAPITAL OUTLAY	\$3,817,830.90	1.35%	\$2,258,081.24	0.80%	\$2,462,573.88	0.78%
OTHER EXPENSES	\$5,528,266.47	1.96%	\$5,676,640.92	2.01%	\$3,931,513.89	1.24%
TRANSFERS	\$0.00	0.00%	\$550,000.00	0.20%	\$2,619,058.56	0.83%
TOTAL APPROPRIATIONS	\$281,914,447.24	100.00%	\$281,792,730.25	100.00%	\$317,117,966.38	100.00%
ENDING FUND BALANCES	\$50,574,403.26		\$51,723,052.92		\$17,563,026.45	
TOTAL APPRS/TRFRS/FUND BALANCES	\$332,488,850.50		\$333,515,783.17		\$334,680,992.83	

**COMPARATIVE ANALYSIS OF BUDGETED EXPENDITURES BY OBJECT
2020-2021**



ANALYSIS OF ESTIMATED BEGINNING FUND BALANCE
JULY 1, 2020

	2019-2020 ACTUAL	ESTIMATED 2020-2021	INCREASE/ -DECREASE
1. RESTRICTED FOR ENCUMBRANCES	\$611,111.84	\$493,444.90	(\$117,666.94)
2. RESTRICTED FOR CATEGORICAL/GRANTS/SPEC. PROJECTS	\$18,192,361.40	\$19,450,406.30	\$1,258,044.90
3. RESTRICTED FOR INVENTORIES	\$1,251,902.29	\$1,203,157.51	(\$48,744.78)
4. UNRESTRICTED FUND BALANCE	\$30,519,027.73	\$30,576,044.21	\$57,016.48
TOTAL BEGINNING BALANCE (July 1, 2020)	\$50,574,403.26	\$51,723,052.92	\$1,148,649.66

ANALYSIS OF ESTIMATED ENDING FUND BALANCE
JUNE 30, 2021

	2019-2020 ACTUAL	ESTIMATED 2020-2021	INCREASE/ -DECREASE
1. RESTRICTED FOR ENCUMBRANCES	\$493,444.90	\$0.00	(\$493,444.90)
2. RESTRICTED FOR EMERGENCY FUND BALANCE (Per Board Policy 6Gx37 - 6.01 - 1% minimum requirements)	\$5,000,000.00	\$5,000,000.00	\$0.00
3. RESTRICTED FOR CATEGORICAL/GRANTS/SPEC. PROJECTS	\$19,450,406.30	\$0.00	(\$19,450,406.30)
4. RESTRICTED FOR INVENTORIES	\$1,203,157.51	\$1,203,157.51	\$0.00
5. UNRESTRICTED BALANCE	\$25,576,044.21	\$11,359,868.94	(\$14,216,175.27)
TOTAL ENDING BALANCE (June 30, 2021)	\$51,723,052.92	\$17,563,026.45	(\$34,160,026.47)

SPECIAL REVENUE FUND

SPECIAL REVENUE KEY POINTS OF INTEREST

- The total Special Revenue budget is **\$56.3** million. The total budget for the Nutrition Services operation is **\$11.4** million; the Federal contracted Programs budget is **\$36.5** million. This fiscal year the district will also receive funds related to the Coronavirus Aid, Relief and Economic Security (CARES) Act. There are two new fund codes. The first is the Elementary and Secondary School Emergency Relief (ESSER) funds; with a budget of \$7 million. The second is the Governor’s Emergency Education Relief (GEER) fund with a budget of \$1.3 million.
- Two Federal projects, Individuals with Disabilities Education Act (\$16 million) and Elementary and Secondary Education Act - Title I (\$11 million) account for 74% (\$27 million) of the total budgeted revenue for Federal Projects.
- Approximately 50% (\$5.7 million) of Nutrition Services’ estimated expenditures are for salaries and benefits.
- Approximately 71% (\$25.9 million) of Federal Project expenditures are for salaries and benefits.
- The total budgeted Federal Project Grants are \$36.5 million. Twenty-five or more different Federal grants may be approved and functioning by the end of the year.
- Federal reimbursements account for 87.3% (\$9.2 million) of the budgeted Nutrition Services revenue (\$10.5 million).
- In Leon County Schools, 23 public schools (21 traditional schools and 2 charter schools) qualify for Title I, Part A funding based on free or reduced lunch (F/RL) percentages, as determined by an Annual Economic Survey. Public schools with 75.01% or higher F/RL are eligible to receive Title I funding, as per the school district’s Title I plan.
- Supplemental services supported by Title I, Part A are provided for students in school-wide programs at:

Apalachee Elementary	Ruediger Elementary	Nims Middle School
Astoria Park Elementary	Sabal Palm Elementary	Second Chance
Bond Elementary	Sealey Elementary	Success Academy
Chaires Elementary	Springwood Elementary	Godby High School
Hartsfield Elementary	Woodville K-8	Rickards High School
Oak Ridge Elementary	Ft. Braden K-8	Tallahassee School of Math and Science
Pineview Elementary	Fairview Middle School	
Riley Elementary	Griffin Middle School	Governors Charter Academy
- The District has 40 self-contained kitchens in schools and one Central Kitchen that makes and delivers vended meals; stores and disperses bulk ingredients such as spices, oils, and vinegar; and produces granola and taco seasoning that is used district-wide.
- Elementary School students will receive both Breakfast and Lunch at no charge this year, as all Elementary Schools are participating in the Community Eligibility Provision.
- For Middle and High School students, the meal prices are as follows:
 - Full Paid Breakfast \$1.00/Partial Pay Breakfast \$0.30
 - Full Pay Lunch \$2.25/Partial Pay Lunch \$0.40
 - Adult Meals are \$2.00 for Breakfast and \$3.50 for Lunch

SUMMARY OF COMBINED REVENUE AND EXPENDITURES AND BALANCES
2020-2021 SPECIAL REVENUE FUND (NUTRITION SERVICES, FEDERAL, AND CARES)

REVENUES	2018-2019 ACTUAL	2019-2020 ACTUAL	2020-2021 ESTIMATED	DIFFERENCE 19-20 vs 20-21
FEDERAL	\$40,155,028.00	\$38,677,304.46	\$54,021,759.30	\$15,344,454.84
STATE SOURCES	\$170,065.00	\$169,108.00	\$160,000.00	(\$9,108.00)
LOCAL SOURCES	\$1,514,927.39	\$1,259,849.51	\$1,180,100.00	(\$79,749.51)
TOTAL REVENUES	\$41,840,020.39	\$40,106,261.97	\$55,361,859.30	\$15,255,597.33
TRANSFERS IN	\$0.00	\$0.00	\$0.00	\$0.00
NON-REVENUE SOURCES	\$0.00	\$0.00	\$0.00	\$0.00
FUND BALANCES	\$2,702,426.77	\$2,503,164.51	\$975,172.80	(\$1,527,991.71)
TOTAL REVENUES & BALANCES	\$44,542,447.16	\$42,609,426.48	\$56,337,032.10	\$13,727,605.62
EXPENDITURES				
INSTRUCTION	\$14,513,553.38	\$13,017,423.38	\$25,234,667.62	\$12,217,244.24
PUPIL PERSONNEL SERVICES	\$983,991.87	\$995,022.86	\$1,456,418.30	\$461,395.44
INSTRUCTIONAL MEDIA SERVICES	\$0.00	\$0.00	\$3,260.37	\$3,260.37
INSTRUCTION & CURRICULUM SERVICES	\$6,153,169.96	\$6,959,062.17	\$8,624,579.48	\$1,665,517.31
INSTRUCTIONAL STAFF TRAINING	\$1,019,673.58	\$806,467.06	\$1,383,654.34	\$577,187.28
INSTRUCTIONAL RELATED TECHNOLOGY	\$136,727.48	\$151,738.50	\$222,818.00	\$71,079.50
BOARD OF EDUCATION	\$500.00	\$0.00	\$0.00	\$0.00
GENERAL ADMINISTRATION	\$1,435,755.50	\$1,131,298.27	\$1,347,645.42	\$216,347.15
SCHOOL ADMINISTRATION	\$0.00	\$0.00	\$0.00	\$0.00
FACILITIES ACQUISITION CONSTRUCTION	\$0.00	\$0.00	\$0.00	\$0.00
FISCAL SERVICES	\$0.00	\$0.00	\$28,035.20	\$28,035.20
NUTRITION SERVICE	\$14,837,444.70	\$14,190,628.21	\$11,463,743.17	(\$2,726,885.04)
CENTRAL SERVICES	\$712,816.31	\$603,481.24	\$817,398.26	\$213,917.02
PUPIL TRANSPORTATION SERVICES	\$182,451.91	\$979,106.00	\$1,460,667.97	\$481,561.97
OPERATION OF PLANT	\$2,317.24	\$2,840.01	\$1,160,474.23	\$1,157,634.22
MAINTENANCE OF PLANT	\$6,649.13	\$3,326.00	\$12,000.00	\$8,674.00
COMMUNITY SERVICES	\$2,154,131.59	\$2,793,959.48	\$2,783,350.44	(\$10,609.04)
ADMINISTRATIVE TECHNOLOGY	\$0.00	\$0.00	\$320,000.00	\$320,000.00
TOTAL EXPENDITURES	\$42,139,182.65	\$41,634,353.18	\$56,318,712.80	\$14,684,359.62
TRANSFERS OUT	\$0.00	\$0.00	\$0.00	\$0.00
FUND BALANCES	\$2,403,264.51	\$975,073.30	\$18,319.30	(\$956,754.00)
TOTAL APPRS/ TRFRS/ BALANCES	\$44,542,447.16	\$42,609,426.48	\$56,337,032.10	\$13,727,605.62

**COMPARATIVE ANALYSIS OF PROJECTED EXPENSES BY OBJECT
2020-2021 SPECIAL REVENUE FUND (NUTRITION SERVICES)**

ESTIMATED APPROPRIATIONS:	2018-2019		2019-2020		2020-2021	
	ACTUAL	% OF TOTAL ACTUAL BUDGET (APPRS)	ACTUAL	% OF TOTAL ACTUAL BUDGET (APPRS)	ESTIMATED	% OF TOTAL EST. BUDGET (APPRS)
NUTRITION SERVICE/FUNCTION 7600						
SALARIES	\$5,639,393.22	38.01%	\$6,010,028.68	42.31%	\$4,074,278.30	35.59%
BENEFITS	\$2,264,861.41	15.26%	\$2,386,132.95	16.80%	\$1,698,000.00	14.83%
PURCHASED SERVICES	\$466,215.91	3.14%	\$319,384.14	2.25%	\$156,600.00	1.37%
ENERGY SERVICES	\$34,807.96	0.23%	\$33,259.38	0.23%	\$33,840.00	0.30%
MATERIALS AND SUPPLIES	\$6,278,209.63	42.31%	\$5,288,472.69	37.23%	\$5,325,250.00	46.51%
CAPITAL OUTLAY	\$124,411.51	0.84%	\$138,954.40	0.98%	\$150,274.87	1.18%
TRANSFER IN	\$0.00	0.00%	\$0.00	0.00%	\$0.00	0.00%
OTHER EXPENSES	\$29,545.06	0.20%	\$29,570.84	0.20%	\$25,500.00	0.22%
TOTAL APPROPRIATIONS	\$14,837,444.70	100.00%	\$14,205,803.08	100.00%	\$11,463,743.17	100.00%
ENDING FUND BALANCE:						
UNRESERVED FUND BALANCE	\$2,365,030.21					
TOTAL ENDING FUND BALANCE	\$2,403,264.51		\$2,503,264.51		\$18,319.30	
TOTAL APPRS/ TRFRS/ BALANCES	\$17,240,709.21		\$17,638,264.51		\$11,482,062.47	

**COMPARATIVE ANALYSIS OF OBJECTS OF EXPENSE
2020-2021 SPECIAL REVENUE FUND (FEDERAL PROJECTS)**

ESTIMATED APPROPRIATIONS:	2018-2019	% OF TOTAL	2019-2020	% OF TOTAL	2020-2021	% OF TOTAL
	ACTUAL	ACTUAL BUDGET (APPRS)	ACTUAL	EST. BUDGET (APPRS)	ESTIMATED	EST. BUDGET (APPRS)
SALARIES	\$13,903,638.62	50.92%	\$14,905,656.88	54.25%	\$19,339,451.82	52.99%
BENEFITS	\$4,363,480.45	15.98%	\$4,724,868.12	17.20%	\$6,641,142.11	18.20%
PURCHASED SERVICES	\$2,787,658.46	10.21%	\$2,194,830.92	7.99%	\$4,113,396.81	11.27%
ENERGY SERVICES	\$0.00	0.00%	\$0.00	0.00%	\$500.00	0.00%
MATERIALS AND SUPPLIES	\$797,280.38	2.92%	\$662,459.85	2.41%	\$949,472.20	2.60%
CAPITAL OUTLAY	\$781,519.19	2.86%	\$467,402.88	1.70%	\$977,530.65	2.68%
OTHER EXPENSES	\$4,669,732.07	17.10%	\$4,518,217.15	16.45%	\$4,473,030.93	12.26%
TOTAL APPROPRIATIONS	\$27,303,309.17	100.00%	\$27,473,435.80	100.00%	\$36,494,524.52	100.00%
TOTAL ENDING FUND BALANCE	\$0.00		\$0.00		\$0.00	
TOTAL APPRS/ TRFRS/ BALANCES	\$27,303,309.17		\$27,473,435.80		\$36,494,524.52	

**COMPARATIVE ANALYSIS OF BUDGETED REVENUE
2020-2021 SPECIAL REVENUE FUND (FEDERAL PROJECTS)**

ESTIMATED REVENUE:	2018-2019 ACTUAL	2019-2020 ACTUAL	2020-2021 ESTIMATED	DIFFERENCE 19-20 vs 20-21
FEDERAL DIRECT:				
MISCELLANEOUS FEDERAL DIRECT	\$2,153,754.83	\$2,784,089.18	\$2,334,216.14	(\$449,873.04)
TOTAL FEDERAL DIRECT	\$2,153,754.83	\$2,784,089.18	\$2,334,216.14	(\$449,873.04)
FEDERAL THROUGH STATE:				
VOCATIONAL EDUCATION ACTS	\$545,320.68	\$543,431.18	\$675,282.08	\$131,850.90
WORKFORCE INVESTMENT ACT	\$359,522.99	\$310,567.35	\$421,848.65	\$111,281.30
TEACHER AND PRINCIPAL TRAINING	\$1,074,251.19	\$1,220,449.09	\$1,501,345.00	\$280,895.91
21ST CENTURY SCHOOLS	\$1,272,442.23	\$1,263,370.18	\$2,038,663.84	\$775,293.66
INDIVIDUALS WITH DISABILITIES EDUCATION ACT (PL 94-142)	\$9,989,006.73	\$11,370,160.95	\$16,083,290.00	\$4,713,129.05
NO CHILD LEFT BEHIND - TITLE I	\$9,737,833.25	\$9,102,868.12	\$11,072,692.78	\$1,969,824.66
ADULT BASIC EDUCATION	\$0.00	\$0.00	\$0.00	\$0.00
LANGUAGE INSTRUCTION TITLE III	\$112,224.60	\$124,648.29	\$346,744.69	\$222,096.40
NUTRITION TRAINING	\$0.00	\$0.00	\$0.00	\$0.00
OTHER FEDERAL THROUGH STATE	\$1,830,363.47	\$753,851.46	\$1,990,731.01	\$1,236,879.55
TOTAL FEDERAL THROUGH STATE	\$24,920,965.14	\$24,689,346.62	\$34,130,598.05	\$9,441,251.43
TOTAL ESTIMATED REVENUES	\$27,074,719.97	\$27,473,435.80	\$36,464,814.19	\$8,991,378.39
FUND BALANCE:				
RESTRICTED	\$0.00	\$0.00	\$29,710.33	\$29,710.33
UNRESTRICTED	\$0.00	\$0.00	\$0.00	\$0.00
TOTAL BEGINNING FUND BALANCE	\$0.00	\$0.00	\$29,710.33	\$29,710.33
TOTAL EST. REVENUE AND FUND BALANCE	\$27,074,719.97	\$27,473,435.80	\$36,494,524.52	\$9,021,088.72

**COMPARATIVE ANALYSIS OF FUNCTIONS OF EXPENSES
2020-2021 SPECIAL REVENUE FUND (FEDERAL PROJECTS)**

ESTIMATED APPROPRIATIONS:	2019-2020 ACTUAL	% OF TOTAL EST. BUDGET (APPROPRIATIONS)	2020-2021 ESTIMATED	% OF TOTAL EST. BUDGET (APPROPRIATIONS)
FUNCTIONS:				
INSTRUCTIONAL SERVICES	\$13,047,134.21	47.49%	\$18,571,715.90	50.89%
PUPIL PERSONNEL SERVICES	\$995,022.86	3.62%	\$1,456,418.30	3.99%
INSTRUCTIONAL MEDIA SERVICES	\$0.00	0.00%	\$3,260.37	0.01%
INSTRUCTION & CURRICULUM DEVELOPMENT SERVICES	\$6,959,062.17	25.33%	\$8,473,403.48	23.22%
INSTRUCTIONAL STAFF TRAINING	\$806,467.06	2.94%	\$1,363,404.34	3.74%
INSTRUCTIONAL RELATED TECHNOLOGY	\$151,738.50	0.55%	\$170,757.00	0.47%
BOARD OF EDUCATION	\$0.00	0.00%	\$0.00	0.00%
GENERAL ADMINISTRATION	\$1,131,298.27	4.12%	\$1,347,645.42	3.69%
SCHOOL ADMINISTRATION	\$0.00	0.00%	\$0.00	0.00%
FACILITIES ACQUISITION CONSTRUCTION	\$0.00	0.00%	\$0.00	0.00%
FISCAL SERVICES	\$0.00	0.00%	\$28,035.20	0.08%
NUTRITION SERVICES	\$0.00	0.00%	\$0.00	0.00%
CENTRAL SERVICES	\$603,481.24	2.20%	\$817,398.26	2.24%
TRANSPORTATION SERVICES	\$979,106.00	3.56%	\$1,460,667.97	4.00%
OPERATION OF PLANT	\$2,840.01	0.01%	\$6,467.84	0.02%
MAINTENANCE OF PLANT	\$3,326.00	0.01%	\$12,000.00	0.03%
COMMUNITY SERVICES	\$2,793,959.48	10.17%	\$2,783,350.44	7.63%
DEBT SERVICE	\$0.00	0.00%	\$0.00	0.00%
TOTAL INSTRUCTIONAL AND SUPPORT SERVICES	\$27,473,435.80	100.00%	\$36,494,524.52	100.00%
TOTAL APPROPRIATIONS	\$27,473,435.80	100.00%	\$36,494,524.52	100.00%
BEGINNING FUND BALANCE	\$0.00		\$0.00	
TOTAL APPRS/ TRFRS/ BALANCES	\$27,473,435.80		\$36,494,524.52	

COMPARATIVE ANALYSIS OF BUDGETED REVENUE

2020-2021 SPECIAL REVENUE FUND – CORONAVIRUS AID, RELIEF, and ECONOMIC SECURITY (CARES) ACT

441 – ELEMENTARY and SECONDARY EDUCATION RELIEF (ESSER)

ESTIMATED REVENUE:	2018-2019 ACTUAL	2019-2020 ACTUAL	2020-2021 ESTIMATED	DIFFERENCE 2019-20 vs 2020-21
FEDERAL DIRECT:				
MISCELLANEOUS FEDERAL DIRECT	\$0.00	\$0.00	\$0.00	\$0.00
TOTAL FEDERAL DIRECT	\$0.00	\$0.00	\$0.00	\$0.00
FEDERAL THROUGH STATE:				
EDUCATION STABILIZATION FUNDS - K-12	\$0.00	\$0.00	\$7,021,266.35	\$7,021,266.35
EDUCATION STABILIZATION FUNDS - WORKFORCE	\$0.00	\$0.00	\$0.00	\$0.00
EDUCATION STABILIZATION FUNDS - VPK	\$0.00	\$0.00	\$0.00	\$0.00
OTHER FEDERAL THROUGH STATE	\$0.00	\$0.00	\$0.00	\$0.00
TOTAL FEDERAL THROUGH STATE	\$0.00	\$0.00	\$7,021,266.35	\$7,021,266.35
TOTAL ESTIMATED REVENUES	\$0.00	\$0.00	\$7,021,266.35	\$7,021,266.35
FUND BALANCE:				
RESTRICTED	\$0.00	\$0.00	\$0.00	\$0.00
UNRESTRICTED	\$0.00	\$0.00	\$0.00	\$0.00
TOTAL BEGINNING FUND BALANCE	\$0.00	\$0.00	\$0.00	\$0.00
TOTAL EST. REVENUE & FUND BALANCE	\$0.00	\$0.00	\$7,021,266.35	\$7,021,266.35

COMPARATIVE ANALYSIS OF OBJECTS OF EXPENSE

2020-2021 SPECIAL REVENUE FUND – CORONAVIRUS AID, RELIEF, and ECONOMIC SECURITY (CARES) ACT

441 – ELEMENTARY and SECONDARY EDUCATION RELIEF (ESSER)

	2018-2019	2019-2020	2020-2021	% OF TOTAL
ESTIMATED APPROPRIATIONS:	ACTUAL	ACTUAL	ESTIMATED	EST. BUDGET
				(APPROPRIATIONS)
SALARIES	\$0.00	\$0.00	\$2,996,613.00	42.68%
BENEFITS	\$0.00	\$0.00	\$924,402.19	13.16%
PURCHASED SERVICES	\$0.00	\$0.00	\$1,142,964.71	16.28%
ENERGY SERVICES	\$0.00	\$0.00	\$500.00	0.01%
MATERIALS AND SUPPLIES	\$0.00	\$0.00	\$857,704.00	12.21%
CAPITAL OUTLAY	\$0.00	\$0.00	\$803,498.25	11.44%
OTHER EXPENSES	\$0.00	\$0.00	\$296,084.20	4.22%
TOTAL APPROPRIATIONS	\$0.00	\$0.00	\$7,021,766.35	100.00%
TOTAL ENDING FUND BALANCE	\$0.00	\$0.00	\$0.00	
TOTAL APPRS/ TRFRS/ BALANCES	\$0.00	\$0.00	\$7,021,766.35	

COMPARATIVE ANALYSIS OF BUDGETED REVENUE

2020-2021 SPECIAL REVENUE FUND – CORONAVIRUS AID, RELIEF, and ECONOMIC SECURITY (CARES) ACT

442 – GOVERNORS EMERGENCY EDUCATION RELIEF (GEER)

ESTIMATED REVENUE:	2018-2019 ACTUAL	2019-2020 ACTUAL	2020-2021 ESTIMATED	DIFFERENCE 19-20 vs 20-21
FEDERAL DIRECT:				
MISCELLANEOUS FEDERAL DIRECT	\$0.00	\$0.00	\$417,637.76	\$417,637.76
TOTAL FEDERAL DIRECT	\$0.00	\$0.00	\$417,637.76	\$417,637.76
FEDERAL THROUGH STATE:				
EDUCATION STABILIZATION FUNDS - K-12	\$0.00	\$0.00	\$648,220.00	\$648,220.00
EDUCATION STABILIZATION FUNDS - WORKFORCE	\$0.00	\$0.00	\$273,321.00	\$273,321.00
EDUCATION STABILIZATION FUNDS - VPK	\$0.00	\$0.00	\$0.00	\$0.00
OTHER FEDERAL THROUGH STATE	\$0.00	\$0.00	\$0.00	\$0.00
TOTAL FEDERAL THROUGH STATE	\$0.00	\$0.00	\$921,541.00	\$921,541.00
TOTAL ESTIMATED REVENUES	\$0.00	\$0.00	\$1,339,178.76	\$1,339,178.76
FUND BALANCE:				
RESTRICTED	\$0.00	\$0.00	\$0.00	\$0.00
UNRESTRICTED	\$0.00	\$0.00	\$0.00	\$0.00
TOTAL BEGINNING FUND BALANCE	\$0.00	\$0.00	\$0.00	\$0.00
TOTAL EST. REVENUE AND FUND BALANCE	\$0.00	\$0.00	\$1,339,178.76	\$1,339,178.76

COMPARATIVE ANALYSIS OF OBJECTS OF EXPENSE

2020-2021 SPECIAL REVENUE FUND – CORONAVIRUS AID, RELIEF, and ECONOMIC SECURITY (CARES) ACT

442 – GOVERNORS EMERGENCY EDUCATION RELIEF (GEER)

	2018-2019	2019-2020	2020-2021	% OF TOTAL
ESTIMATED APPROPRIATIONS:	ACTUAL	ACTUAL	ESTIMATED	EST. BUDGET
				(APPROPRIATIONS)
SALARIES	\$0.00	\$0.00	\$119,604.93	8.93%
BENEFITS	\$0.00	\$0.00	\$37,456.64	2.80%
PURCHASED SERVICES	\$0.00	\$0.00	\$632,087.59	47.20%
ENERGY SERVICES	\$0.00	\$0.00	\$0.00	0.00%
MATERIALS AND SUPPLIES	\$0.00	\$0.00	\$133,681.50	9.98%
CAPITAL OUTLAY	\$0.00	\$0.00	\$251,346.00	18.77%
OTHER EXPENSES	\$0.00	\$0.00	\$165,002.10	12.32%
TOTAL APPROPRIATIONS	\$0.00	\$0.00	\$1,339,178.76	100.00%
TOTAL ENDING FUND BALANCE	\$0.00	\$0.00	\$0.00	
TOTAL APPRS/ TRFRS/ BALANCES	\$0.00	\$0.00	\$1,339,178.76	

CAPITAL IMPROVEMENT FUND

CAPITAL OUTLAY KEY POINTS OF INTEREST

- Total Capital Outlay Budget for FY 2020-2021 is \$72.5 million
- Total revenue in the Capital Outlay fund is \$48.9 million (67% of the budget). Within the capital improvement budget the local 1.5 mill property tax levy is anticipated to generate \$29.1 million and the ½ cent sales tax will generate \$19.5 million for FY 2021. Carryover balances from 2019-20 equals \$10.1 million (14% of the total budget).
- The distribution of expenditures within the Capital Outlay projects budget is \$30.1 million (41% of the total budget) expended for Buildings, Furniture, Fixtures, Equipment, Land Improvements, Land, Computer Software, Motor Vehicles/Buses, and Remodeling and Renovations.
- Total transfers out of Capital Outlay to the General and Debt Service funds equal \$27.9 million (42.6% of the budget). It includes \$850 thousand in pass through PECO funds for Charter Schools. \$2.8 million from the LCIF fund to the General Fund to pay \$1.7 million on property liability insurance, \$600 thousand for emergency and preventative maintenance. The LCIF transfer also includes \$11.7 million to the Debt Service fund for principal and interest payments on debt. The Other Capital Outlay fund transfers \$3.8 million to the General Funds for maintenance salaries and \$7.4 million to Debt Service to pay on the Sales Tax Revenue Bonds, Series 2014.
- The levy of a ½ penny sales tax authorized by the voters in November 2012 will last fifteen years and accounts for \$19.5 million of revenue in the 2020-2021 budget year. This year's budget reflects and estimated \$2.4 million decrease in response to the national COVID – 19 pandemic.

CAPITAL IMPROVEMENT PROGRAM

OPERATIONAL BUDGET IMPACT AND PROJECT LISTING SUMMARIES

This section of the Capital Improvement Program highlights the relationship of capital outlay expenditures to the operational budget.

RELATIONSHIP TO OPERATIONAL BUDGET

The Leon County School Board managed the best it could in its preventative, emergency, and corrective maintenance activities for more than 20 years prior to the General Obligation Bond Issue in 1987 and 1988. Prior to the influx of bond dollars, the district relied solely on the inadequate tax dollars and fluctuating state support for new construction, remodeling, and preventative maintenance of school facilities.

The ½ cent sales tax passed in November 2002 began providing revenue in January of 2003. It continued for 10 years, ending on December 31, 2012. It was projected to generate over \$196 million and was used to construct new schools and renovate existing ones. Two new schools, Mehrdad Pepper Ghazvini Learning Center (\$11.3 million) and Bond (\$14.7 million) were built using these funds. Bond was already an existing school. The old school building was completely razed and the new school building was built in the same location. Wesson Elementary was closed and the student population combined with Bond when it was rebuilt. Remodeling and renovation has been occurring at several schools, including Leon High, Rickards High, Lincoln High, Godby High, Raa Middle, Sullivan Elementary, and Sabal Palm Elementary. The District received \$167.6 million for the period January 1, 2003 through June 30, 2012.

The ½ cent sales tax referendum was presented to the voters in November 2012. It passed with 68% voter approval and began in January 2013. It will continue for 15 years, ending in December 2028. A citizens committee determined over a 15 year period the projected capital outlay needs would be \$839.6 million. Projected revenues without the ½ cent sales tax are \$364.2 million, leaving a shortfall of \$475.4 million. Projected sales tax revenue is \$364.2 million over 15 years. The extension of the sales tax would cover 76.6% of the shortfall.

One significant effect of the current capital outlay program has been to substantially reduce the costs of preventative, emergency, and corrective repairs at the renovated schools. Measures implemented such as energy audits to maximize efficiency; incentives to cut costs; and maximum use of capital outlay energy grants, continue to have a positive impact on operational costs, both short and long term, in the district-wide maintenance cost areas.

The information on page 47 demonstrates how the Capital Outlay Budget supports the operational budget. The total Capital Outlay budget of \$72.5 million relieves this expenditure burden from the operational budget. Capital Outlay pays approximately \$5 million of salary and benefits for employees who work on capital outlay related projects, which allows the General Fund to spend for other needs. Expenditures of \$4 million for general maintenance and Safety-to-Life projects save the District millions of dollars in lawsuits that never occur because these problems are eliminated. Expenditures of \$3.6 million for

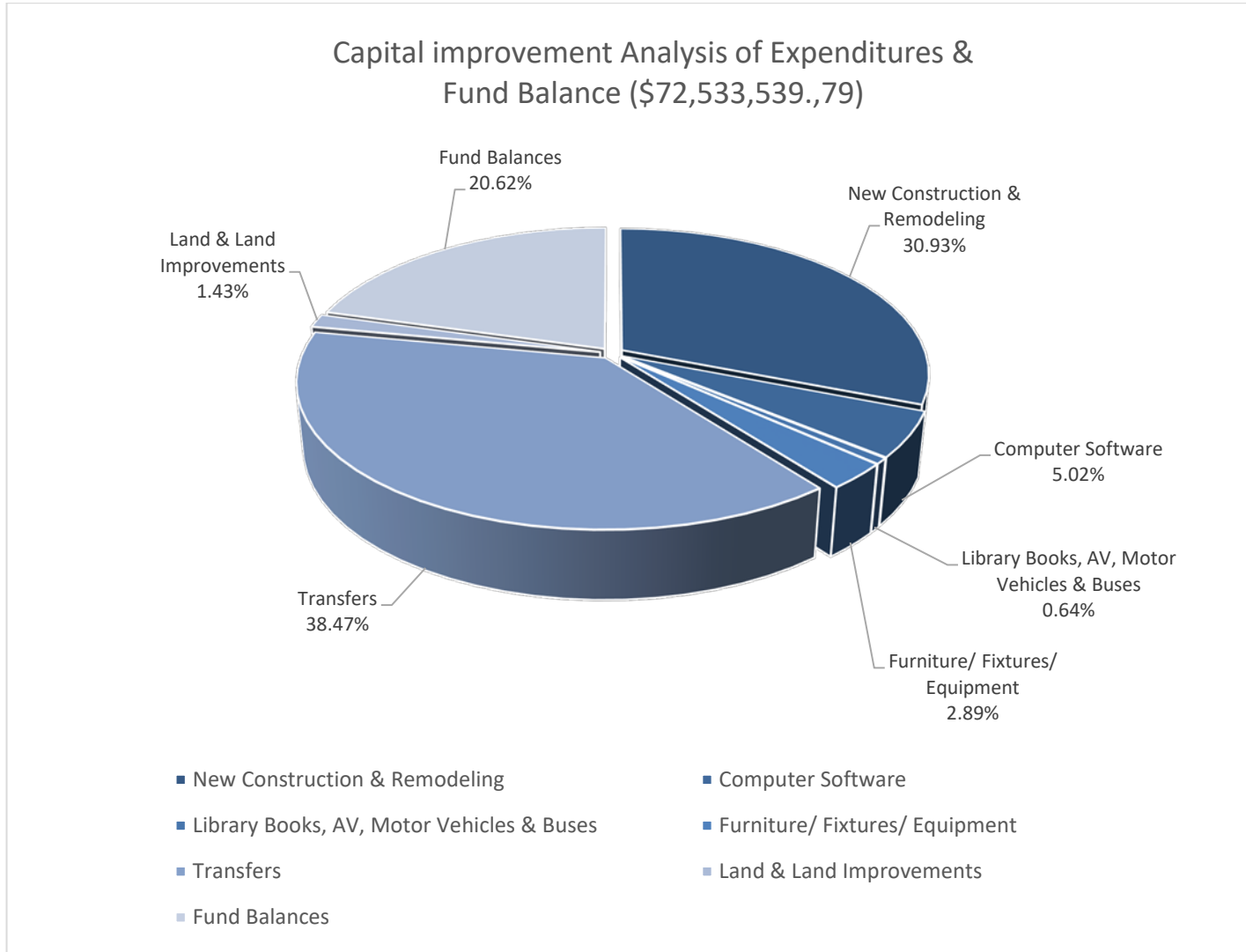


preventative and emergency maintenance are budgeted. Preventative maintenance occurring on a continuous schedule saves the District money over time for the operating budget because it ensures more efficient daily operations of equipment, less down time from equipment breakdowns, and less maintenance expenditures because costly major breakdowns are averted over the life of the assets.

**COMBINED SUMMARY – ALL FUNDS/ ALL PROJECTS
2020-2021 CAPITAL IMPROVEMENT FUNDS**

	1011.14 LOANS	PECO FUNDS	DISTRICT BONDS	CO/DS FUNDS	1.50 MILLS - LCIF	OTHER CAPITAL OUTLAY	TOTAL
	330	340	350	360	370	390	
ESTIMATED REVENUE:							
STATE:	\$0.00	\$850,000.00	\$0.00	\$0.00	\$0.00	\$610,863.00	\$1,460,863.00
LOCAL: 1.50 MILLS	\$0.00	\$0.00	\$0.00	\$0.00	\$29,070,343.00	\$0.00	\$29,070,343.00
SALES TAX	\$0.00	\$0.00	\$0.00	\$0.00	\$0.00	\$19,500,000.00	\$19,500,000.00
INTEREST	\$0.00	\$0.00	\$0.00	\$0.00	\$0.00	\$0.00	\$0.00
TOTAL ESTIMATED REVENUE	\$0.00	\$850,000.00	\$0.00	\$0.00	\$29,070,343.00	\$20,110,863.00	\$50,031,206.00
OTHER FINANCING SOURCES	\$0.00	\$0.00	\$0.00	\$0.00	\$0.00	\$0.00	\$0.00
BEGINNING FUND BALANCE:							
UNRESTRICTED	\$6,580.37	\$142,929.69	\$89,988.23	\$3,050,404.79	\$6,197,028.01	\$4,039,001.10	\$13,525,932.19
RESTRICTED FOR PROJECTS	\$0.00	\$0.00	\$0.00	\$0.00	\$0.00	\$0.00	\$0.00
RESERVE FOR ENCUMBRANCES	\$0.00	\$3,538.00	\$0.00	\$97,443.22	\$963,720.94	\$9,046,162.44	\$10,110,864.60
TOTAL BEGINNING FUND BALANCE (7/1/2020)	\$6,580.37	\$146,467.69	\$89,988.23	\$3,147,848.01	\$7,160,748.95	\$13,085,163.54	\$23,636,796.79
TOTAL EST. REVENUE & FUND BALANCE	\$6,580.37	\$996,467.69	\$89,988.23	\$3,147,848.01	\$36,231,091.95	\$33,196,026.54	\$73,668,002.79
EST. APPROPRIATIONS: (BY OBJECTS)(1)							
LIBRARY BOOKS	\$0.00	\$0.00	\$0.00	\$0.00	\$0.00	\$0.00	\$0.00
AUDIO VISUAL	\$0.00	\$0.00	\$0.00	\$0.00	\$0.00	\$0.00	\$0.00
BUILDINGS	\$0.00	\$0.00	\$0.00	\$0.00	\$35,395.15	\$1,684,192.63	\$1,719,587.78
FURNITURE/FIXTURES/EQUIPMENT	\$0.00	\$0.00	\$0.00	\$0.00	\$193,931.30	\$1,898,797.47	\$2,092,728.77
MOTOR VEHICLES/BUSES	\$0.00	\$0.00	\$0.00	\$0.00	\$0.00	\$463,522.33	\$463,522.33
LAND	\$0.00	\$0.00	\$0.00	\$0.00	\$0.00	\$0.00	\$0.00
LAND IMPROVEMENTS	\$0.00	\$3,538.00	\$0.00	\$0.00	\$306,927.78	\$724,989.27	\$1,035,455.05
REMODELING & RENOVATIONS	\$0.00	\$0.00	\$0.00	\$97,443.22	\$10,569,688.01	\$10,051,149.90	\$20,718,281.13
COMPUTER SOFTWARE	\$0.00	\$0.00	\$0.00	\$0.00	\$2,608,062.70	\$1,034,373.84	\$3,642,436.54
TOTAL APPROPRIATIONS	\$0.00	\$3,538.00	\$0.00	\$97,443.22	\$13,714,004.94	\$15,857,025.44	\$29,672,011.60
TRANSFERS:							
CAPITAL OUTLAY/ CHARTERS	\$0.00	\$0.00	\$0.00	\$0.00	\$0.00	\$0.00	\$0.00
GENERAL OPERATING FUND	\$0.00	\$850,000.00	\$0.00	\$0.00	\$2,849,716.00	\$5,050,000.00	\$8,749,716.00
DEBT SERVICE	\$0.00	\$0.00	\$0.00	\$0.00	\$11,709,950.75	\$7,446,570.00	\$19,156,520.75
TOTAL TRANSFERS	\$0.00	\$850,000.00	\$0.00	\$0.00	\$14,559,666.75	\$12,496,570.00	\$27,906,236.75
ENDING FUND BALANCE (6/30/2021)	\$6,580.37	\$142,929.69	\$89,988.23	\$3,050,404.79	\$7,957,420.26	\$4,842,431.10	\$16,089,754.44
TOTAL APPRS/ TRFS/ FUND BALANCE	\$6,580.37	\$996,467.69	\$89,988.23	\$3,147,848.01	\$36,231,091.95	\$33,196,026.54	\$73,668,002.79
PERCENT OF TOTAL FUNDS	0.01%	1.35%	0.12%	4.27%	49.18%	45.06%	100.00%

CAPITAL IMPROVEMENT EXPENDITURES AND FUND BALANCE
2020-2021 CAPITAL IMPROVEMENT FUNDS



PUBLIC EDUCATION CAPITAL OUTLAY (PECO)
2020-2021 CAPITAL IMPROVEMENT FUND

	2018-2019 ACTUAL	2019-2020 ACTUAL	2020-2021 ESTIMATED	DIFFERENCE 2019-20 vs 2020-21
ESTIMATED REVENUE:				
STATE:	\$1,652,214.92	\$837,549.00	\$850,000.00	\$12,451.00
LOCAL: 1.50 MILLS	\$0.00	\$0.00	\$0.00	\$0.00
INTEREST	\$0.00	\$0.00	\$0.00	\$0.00
NON-REVENUE SOURCES	\$2,044.38	\$2,065.20	\$0.00	(\$2,065.20)
TOTAL ESTIMATED REVENUE	\$1,654,259.30	\$839,614.20	\$850,000.00	\$10,385.80
OTHER FINANCING SOURCES	\$0.00	\$0.00	\$0.00	\$0.00
FUND BALANCE:				
UNRESTRICTED	\$729.99	\$201,466.32	\$142,929.69	(\$58,536.63)
RESTRICTED FOR PROJECTS	\$512,811.72	\$49,542.93	\$0.00	(\$49,542.93)
RESERVED FOR ENCUMBRANCES	\$577,001.79	\$431,339.14	\$3,538.00	(\$427,801.14)
TOTAL FUND BALANCE (JULY 1, 2020)	\$1,090,543.50	\$682,348.39	\$146,467.69	(\$535,880.70)
TOTAL EST. REVENUE & FUND BALANCE	\$2,744,802.80	\$1,521,962.59	\$996,467.69	(\$525,494.90)
ESTIMATED APPROPRIATIONS:				
LIBRARY BOOKS	\$0.00	\$0.00	\$0.00	\$0.00
AUDIO VISUALS	\$0.00	\$0.00	\$0.00	\$0.00
BUILDINGS	\$0.00	\$0.00	\$0.00	\$0.00
FURNITURE/FIXTURES/EQUIPMENT	\$3,043.30	\$0.00	\$0.00	\$0.00
MOTOR VEHICLES	\$0.00	\$0.00	\$0.00	\$0.00
LAND	\$0.00	\$0.00	\$0.00	\$0.00
LAND IMPROVEMENTS	\$57,274.20	\$0.00	\$3,538.00	\$3,538.00
REMODELING & RENOVATIONS	\$1,127,309.42	\$537,945.90	\$0.00	(\$537,945.90)
COMPUTER SOFTWARE	\$17,444.49	\$0.00	\$0.00	\$0.00
TOTAL APPROPRIATIONS	\$1,205,071.41	\$537,945.90	\$3,538.00	(\$534,407.90)
TRANSFERS:				
GENERAL FUND	\$857,383.00	\$837,549.00	\$850,000.00	\$12,451.00
DEBT SERVICE	\$0.00	\$0.00	\$0.00	\$0.00
TOTAL TRANSFERS	\$857,383.00	\$837,549.00	\$850,000.00	\$12,451.00
ENDING FUND BALANCE (JUNE 30, 2021)	\$682,348.39	\$146,467.69	\$142,929.69	(\$3,538.00)
TOTAL APPRS/ TRFS/ FUND BALANCE	\$2,744,802.80	\$1,521,962.59	\$996,467.69	(\$525,494.90)

**REVENUE ANTICIPATION NOTES, SERIES 2011, 1011.14 BUS PURCHASE
2020-2021 CAPITAL IMPROVEMENT FUND**

	2018-2019 ACTUAL	2019- 2020 ACTUAL	2020-2021 ESTIMATED	DIFFERENCE 2019-20 vs 2020-21
ESTIMATED REVENUE:				
STATE:	\$0.00	\$0.00	\$0.00	\$0.00
LOCAL: 1.50 MILLS	\$0.00	\$0.00	\$0.00	\$0.00
INTEREST	\$0.00	\$0.00	\$0.00	\$0.00
NON-REVENUE SOURCES	\$0.00	\$0.00	\$0.00	\$0.00
TOTAL ESTIMATED REVENUE	\$0.00	\$0.00	\$0.00	\$0.00
OTHER FINANCING SOURCES:				
LOAN 1011.14 - BUS PURCHASE	\$0.00	\$0.00	\$0.00	\$0.00
FUND BALANCE:				
UNRESTRICTED	\$0.00	\$6,580.37	\$6,580.37	\$0.00
RESTRICTED FOR PROJECTS	\$10,502.28	\$0.00	\$0.00	\$0.00
RESERVED FOR ENCUMBRANCES	\$14,073.37	\$0.00	\$0.00	\$0.00
TOTAL FUND BALANCE (JULY 1, 2020)	\$24,575.65	\$6,580.37	\$6,580.37	\$0.00
TOTAL EST. REVENUE & FUND BALANCE	\$24,575.65	\$6,580.37	\$6,580.37	\$0.00
ESTIMATED APPROPRIATIONS:				
LIBRARY BOOKS	\$0.00	\$0.00	\$0.00	\$0.00
AUDIO VISUALS	\$0.00	\$0.00	\$0.00	\$0.00
BUILDINGS	\$0.00	\$0.00	\$0.00	\$0.00
FURNITURE/ FIXTURES/ EQUIPMENT	\$0.00	\$0.00	\$0.00	\$0.00
MOTOR VEHICLES	\$17,995.27	\$0.00	\$0.00	\$0.00
LAND	\$0.00	\$0.00	\$0.00	\$0.00
LAND IMPROVEMENTS	\$0.00	\$0.00	\$0.00	\$0.00
REMODELING & RENOVATIONS	\$0.00	\$0.00	\$0.00	\$0.00
COMPUTER SOFTWARE	\$0.00	\$0.00	\$0.00	\$0.00
TOTAL APPROPRIATIONS	\$17,995.27	\$0.00	\$0.00	\$0.00
TRANSFERS:				
GENERAL FUND	\$0.00	\$0.00	\$0.00	\$0.00
DEBT SERVICE	\$0.00	\$0.00	\$0.00	\$0.00
TOTAL TRANSFERS	\$0.00	\$0.00	\$0.00	\$0.00
ENDING FUND BALANCE (JUNE 30, 2021)	\$6,580.38	\$6,580.37	\$6,580.37	\$0.00
TOTAL APPRS/ TRFS/ FUND BALANCE	\$24,575.65	\$6,580.37	\$6,580.37	\$0.00

DISTRICT BOND FUNDS
2020-2021 CAPITAL IMPROVEMENT FUND

	2018-2019 ACTUAL	2019-2020 ACTUAL	2020-2021 ESTIMATED	DIFFERENCE 2019-20 vs 2020-21
ESTIMATED REVENUE:				
STATE:	\$0.00	\$0.00	\$0.00	\$0.00
LOCAL: 1.5 MILLS	\$0.00	\$0.00	\$0.00	\$0.00
INTEREST	\$15,704.04	\$11,271.30	\$0.00	(\$11,271.30)
NON-REVENUE SOURCES	\$237.24	\$0.00	\$0.00	\$0.00
TOTAL ESTIMATED REVENUE	\$15,941.28	\$11,271.30	\$0.00	(\$11,271.30)
OTHER FINANCING SOURCES: (SALE OF BONDS)	\$0.00	\$0.00	\$0.00	\$0.00
FUND BALANCE:				
UNRESTRICTED	\$6,151.08	\$17,633.40	\$89,988.23	\$72,354.83
RESTRICTED FOR PROJECTS	\$323,715.50	\$31,424.87	\$0.00	(\$31,424.87)
RESERVED FOR ENCUMBRANCES	\$345,432.81	\$34,558.51	\$0.00	(\$34,558.51)
TOTAL FUND BALANCE (JULY 1, 2020)	\$675,299.39	\$83,616.78	\$89,988.23	\$6,371.45
TOTAL EST. REVENUE & FUND BALANCE	\$691,240.67	\$94,888.08	\$89,988.23	(\$4,899.85)
ESTIMATED APPROPRIATIONS:				
LIBRARY BOOKS	\$0.00	\$0.00	\$0.00	\$0.00
AUDIO VISUALS	\$0.00	\$0.00	\$0.00	\$0.00
BUILDINGS	\$37,165.19	\$0.00	\$0.00	\$0.00
FURNITURE/FIXTURES/EQUIPMENT	\$4,409.06	\$0.00	\$0.00	\$0.00
MOTOR VEHICLES	\$0.00	\$0.00	\$0.00	\$0.00
LAND	\$0.00	\$0.00	\$0.00	\$0.00
LAND IMPROVEMENTS	\$57,545.10	\$0.00	\$0.00	\$0.00
REMODELING & RENOVATIONS	\$508,504.54	\$4,899.85	\$0.00	(\$4,899.85)
COMPUTER SOFTWARE	\$0.00	\$0.00	\$0.00	\$0.00
TOTAL APPROPRIATIONS	\$607,623.89	\$4,899.85	\$0.00	(\$4,899.85)
TRANSFERS:				
CAPITAL OUTLAY	\$0.00	\$0.00	\$0.00	\$0.00
GENERAL FUND	\$0.00	\$0.00	\$0.00	\$0.00
DEBT SERVICE	\$0.00	\$0.00	\$0.00	\$0.00
TOTAL TRANSFERS	\$0.00	\$0.00	\$0.00	\$0.00
ENDING FUND BALANCE (JUNE 30, 2021)	\$83,616.78	\$89,988.23	\$89,988.23	\$0.00
TOTAL APPRS/ TRFS/ FUND BALANCE	\$691,240.67	\$94,888.08	\$89,988.23	(\$4,899.85)

CAPITAL OUTLAY/ DEBT SERVICE (CO/DS)
2020-2021 CAPITAL IMPROVEMENT FUND

	2018-2019 ACTUAL	2019-2020 ACTUAL	2020-2021 ESTIMATED	DIFFERENCE 2019-20 vs 2020-21
ESTIMATED REVENUE:				
STATE:	\$1,113,553.49	\$1,152,857.07	\$0.00	(\$1,152,857.07)
LOCAL: 1.50 MILLS	\$0.00	\$0.00	\$0.00	\$0.00
INTEREST	\$25,112.84	\$39,745.84	\$0.00	(\$39,745.84)
NON-REVENUE SOURCES	\$0.00	\$0.00	\$0.00	\$0.00
TOTAL ESTIMATED REVENUE	\$1,138,666.33	\$1,192,602.91	\$0.00	(\$1,192,602.91)
OTHER FINANCING SOURCES:	\$0.00	\$0.00	\$0.00	\$0.00
FUND BALANCE:				
UNRESTRICTED	\$1,059,574.08	\$1,859,201.88	\$3,050,404.79	\$1,191,202.91
RESTRICTED FOR PROJECTS	\$339.76	\$118,961.44	\$0.00	(\$118,961.44)
RESERVED FOR ENCUMBRANCES	\$854,800.21	\$0.00	\$97,443.22	\$97,443.22
TOTAL FUND BALANCE (JULY 1, 2020)	\$1,914,714.05	\$1,978,163.32	\$3,147,848.01	\$1,169,684.69
TOTAL EST. REVENUE & FUND BALANCE	\$3,053,380.38	\$3,170,766.23	\$3,147,848.01	(\$22,918.22)
ESTIMATED APPROPRIATIONS:				
LIBRARY BOOKS	\$0.00	\$0.00	\$0.00	\$0.00
AUDIO VISUALS	\$0.00	\$0.00	\$0.00	\$0.00
BUILDINGS	\$25,564.45	\$0.00	\$0.00	\$0.00
FURNITURE/ FIXTURES/ EQUIPMENT	\$318,797.00	\$0.00	\$0.00	\$0.00
MOTOR VEHICLES	\$0.00	\$0.00	\$0.00	\$0.00
LAND	\$0.00	\$0.00	\$0.00	\$0.00
LAND IMPROVEMENTS	\$6,729.00	\$0.00	\$0.00	\$0.00
REMODELING & RENOVATIONS	\$386,388.03	\$22,918.22	\$97,443.22	\$74,525.00
COMPUTER SOFTWARE	\$0.00	\$0.00	\$0.00	\$0.00
TOTAL APPROPRIATIONS	\$737,478.48	\$22,918.22	\$97,443.22	\$74,525.00
TRANSFERS:				
GENERAL FUND	\$0.00	\$0.00	\$0.00	\$0.00
DEBT SERVICE	\$0.00	\$0.00	\$0.00	\$0.00
TOTAL TRANSFERS:	\$0.00	\$0.00	\$0.00	\$0.00
ENDING FUND BALANCE (JUNE 30, 2021)	\$2,315,901.90	\$3,147,848.01	\$3,050,404.79	(\$97,443.22)
TOTAL APPRS/ TRFS/ FUND BALANCE	\$3,053,380.38	\$3,170,766.23	\$3,147,848.01	(\$22,918.22)

LOCAL CAPITAL IMPROVEMENT FUND (LCIF) – 1.50 MILLS
2020-2021 CAPITAL IMPROVEMENT FUND

	2018-2019 ACTUAL	2019-2020 ACTUAL	2020-2021 ESTIMATED	DIFFERENCE 2019-20 VS 2020-21
ESTIMATED REVENUE:				
STATE:	\$0.00	\$0.00	\$0.00	\$0.00
LOCAL: 1.50 MILLS	\$25,995,459.83	\$27,443,582.05	\$29,070,343.00	\$1,626,760.95
SALEX TAX	\$0.00	\$0.00	\$0.00	\$0.00
INTEREST	\$424,463.67	\$237,331.96	\$0.00	(\$237,331.96)
NON-REVENUE SOURCES	\$7,968.40	\$19,813.23	\$0.00	(\$19,813.23)
TOTAL ESTIMATED REVENUE	\$26,427,891.90	\$27,700,727.24	\$29,070,343.00	\$1,369,615.76
 OTHER FINANCING SOURCES:	 \$0.00	 \$0.00	 \$0.00	 \$0.00
FUND BALANCE:				
UNRESTRICTED	\$4,142,819.63	\$1,759,828.82	\$6,197,028.01	\$4,437,199.19
RESTRICTED FOR PROJECTS	\$1,206,564.19	\$1,960,123.24	\$0.00	(\$1,960,123.24)
RESERVED FOR ENCUMBRANCES	\$4,395,342.25	\$5,600,412.92	\$963,720.94	(\$4,636,691.98)
TOTAL FUND BALANCE (JULY 1, 2020)	\$9,744,726.07	\$9,320,364.98	\$7,160,748.95	(\$2,159,616.03)
TOTAL EST. REVENUE & FUND BALANCE	\$36,172,617.97	\$37,021,092.22	\$36,231,091.95	(\$790,000.27)
 ESTIMATED APPROPRIATIONS:				
LIBRARY BOOKS	\$0.00	\$0.00	\$0.00	\$0.00
AUDIO VISUALS	\$0.00	\$0.00	\$0.00	\$0.00
BUILDINGS	\$95,663.34	\$4,294,883.56	\$35,395.15	(\$4,259,488.41)
FURNITURE/ FIXTURES/ EQUIPMENT	\$208,071.81	\$474,184.80	\$193,931.30	(\$280,253.50)
MOTOR VEHICLES	\$456,566.10	\$0.00	\$0.00	\$0.00
LAND	\$0.00	\$0.00	\$0.00	\$0.00
LAND IMPROVEMENTS	\$4,469,888.92	\$1,616,498.65	\$306,927.78	(\$1,309,570.87)
REMODELING & RENOVATIONS	\$3,083,161.97	\$4,264,528.88	\$10,569,688.01	\$6,305,159.13
COMPUTER SOFTWARE	\$1,176,686.29	\$2,210,751.37	\$2,608,062.70	\$397,311.33
TOTAL APPROPRIATIONS	\$9,490,038.43	\$12,860,847.26	\$13,714,004.94	\$853,157.68
 TRANSFERS:				
CAPTIAL OUTLAY/CHARTERS	\$0.00		\$0.00	\$0.00
GENERAL FUND	\$5,777,049.00	\$4,949,716.00	\$2,849,716.00	(\$2,100,000.00)
DEBT SERVICE	\$11,585,165.56	\$12,049,780.01	\$11,709,950.75	(\$339,829.26)
TOTAL TRANSFERS:	\$17,362,214.56	\$16,999,496.01	\$14,559,666.75	(\$2,439,829.26)
 ENDING FUND BALANCE (JUNE 30, 2021)	 \$9,320,364.98	 \$7,160,748.95	 \$7,957,420.26	 \$796,671.31
TOTAL APPRS/ TRFS/FUND BALANCE	\$36,172,617.97	\$37,021,092.22	\$36,231,091.95	(\$790,000.27)

OTHER CAPITAL PROJECTS
2020-2021 CAPITAL IMPROVEMENT FUND

	2018-2019 ACTUAL	2019-2020 ACTUAL	2020-2021 ESTIMATED	DIFFERENCE 2019 -20 VS 2020-21
ESTIMATED REVENUE:				
STATE:	\$1,210,065.00	\$0.00	\$610,863.00	\$610,863.00
LOCAL: 1.50 MILLS	\$0.00	\$0.00	\$0.00	\$0.00
SALES TAX	\$21,828,550.00	\$21,976,463.27	\$19,500,000.00	(\$2,476,463.27)
INTEREST	\$268,512.60	\$201,569.32	\$0.00	(\$201,569.32)
NON-REVENUE SOURCES	\$1,671,188.33	\$1,002,096.27	\$0.00	(\$1,002,096.27)
TOTAL ESTIMATED REVENUE	\$24,978,315.93	\$23,180,128.86	\$20,110,863.00	(\$3,069,265.86)
OTHER FINANCING SOURCES:	\$0.00	\$0.00	\$0.00	\$0.00
FUND BALANCE:				
UNRESTRICTED	\$13,409,303.56	\$1,771,338.12	\$4,039,001.10	\$2,267,662.98
RESTRICTED FOR PROJECTS	\$7,710,202.09	\$4,098,557.37	\$0.00	(\$4,098,557.37)
RESERVED FOR ENCUMBRANCES	\$17,015,852.82	\$15,131,181.36	\$9,046,162.44	(\$6,085,018.92)
TOTAL FUND BALANCE	\$38,135,358.47	\$21,001,076.85	\$13,085,163.54	(\$7,915,913.31)
TOTAL EST. REVENUE & FUND BALANCE	\$63,113,674.40	\$44,181,205.71	\$33,196,026.54	(\$10,985,179.17)
ESTIMATED APPROPRIATIONS:				
LIBRARY BOOKS	\$0.00	\$0.00	\$0.00	\$0.00
AUDIO VISUALS	\$0.00	\$0.00	\$0.00	\$0.00
BUILDINGS	\$13,259,330.17	\$7,162,291.75	\$1,684,192.63	(\$5,478,099.12)
FURNITURE/FIXTURES/EQUIPMENT	\$1,830,213.34	\$3,365,693.67	\$1,898,797.47	(\$1,466,896.20)
MOTOR VEHICLES	\$401,443.33	\$0.00	\$463,522.33	\$463,522.33
LAND	\$0.00	\$0.00	\$0.00	\$0.00
LAND IMPROVEMENTS	\$10,023,613.42	\$3,557,190.45	\$724,989.27	(\$2,832,201.18)
REMODELING & RENOVATIONS	\$7,963,919.26	\$9,348,906.68	\$10,051,149.90	\$702,243.22
COMPUTER SOFTWARE	\$1,119,508.03	\$210,279.62	\$1,034,373.84	\$824,094.22
TOTAL APPROPRIATIONS	\$34,598,027.55	\$23,644,362.17	\$15,857,025.44	(\$7,787,336.73)
TRANSFERS:				
GENERAL FUND	\$0.00	\$0.00	\$5,050,000.00	\$5,050,000.00
DEBT SERVICE	\$7,514,570.00	\$7,450,070.00	\$7,446,570.00	(\$3,500.00)
TOTAL TRANSFERS	\$7,514,570.00	\$7,450,070.00	\$12,496,570.00	\$5,046,500.00
ENDING FUND BALANCE	\$21,001,076.85	\$13,086,773.54	\$4,842,431.10	(\$8,244,342.44)
TOTAL APPRS/ TRFS/ FUND BALANCE	\$63,113,674.40	\$44,181,205.71	\$33,196,026.54	(\$10,985,179.17)

DEBT SERVICE FUND

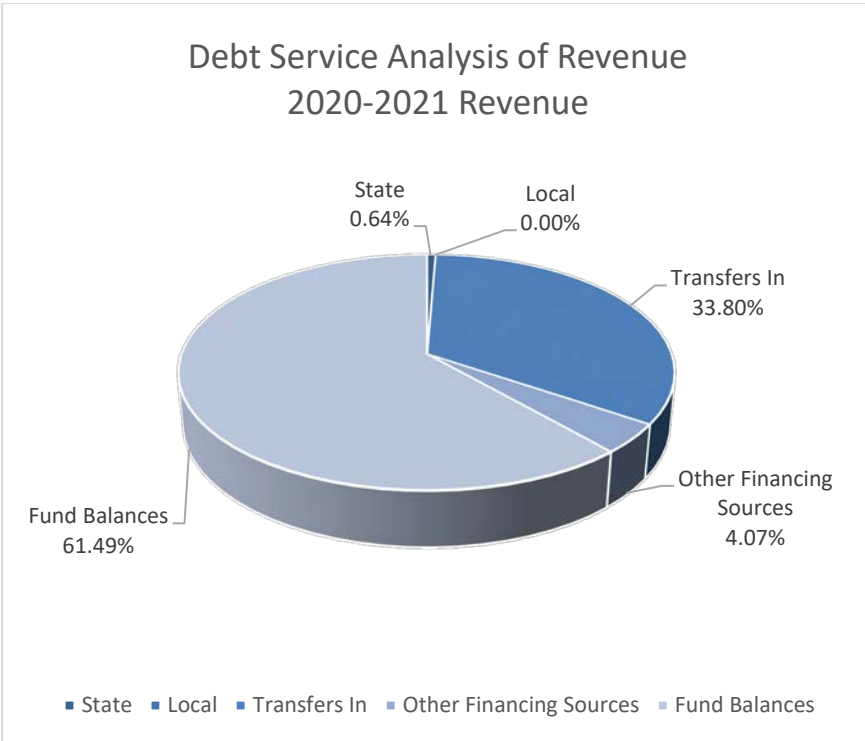
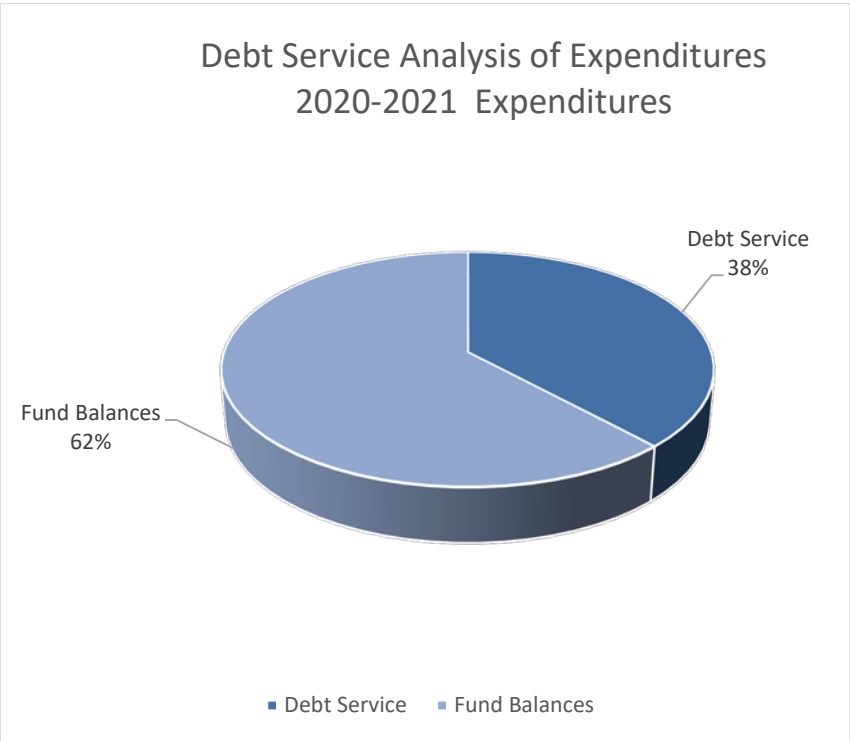
DEBT SERVICE KEY POINTS OF INTEREST

- The Debt Service Fund (\$64.4 million) is funded 0.6% from state sources (\$413 thousand); 4% from federal rebates (\$2.6 million); 34% from transfers from Capital Outlay and General Fund (\$21.8 million); 61.4% from the fund balance (\$39.6 million) brought forward from FY 2020.
- Expenditures within the Debt Service fund are directed to payments for principal of \$18.7 million (76%), interest of \$5.8 million (24%) and other fees of \$19 thousand (0.1%).
- The interest rate on debt service ranges from 0% to 5.68%.
- Expenditures for lease-purchases of educational facilities may not exceed 75% of the total 1.50 mills levied. Leon County Schools could spend up to \$20.5 million. The total amount spent will be \$14.2 million of which \$13.3 million is for lease-purchases of facilities. The total (\$14.2 million) is 52% of the levy and the amount for facilities (\$13.3 million) is equivalent to 48.7% of the 1.5 mill levy. However, the law exempts lease purchases for educational facilities entered into before June 30, 2009. Therefore, the amount applicable is \$5.8 million, which is 20.9% of the 1.5 mill levy, well below the 75% threshold. These payments are to retire the QZAB Series 2010 and the QSCB Series 2010. Other COPs paid from 1.5 mills are the COPs Series 2016 Refunding of the 2005 and 2006 COPs.
- The 2014 Sales Tax Bond Issue was issued for \$75 million in January 2014 to renovate and add classroom space. The balance will be \$44.6 million after paying \$5.2 million of principal for the 20/21 fiscal year. The expected date this Bond will be retired is September 1, 2027. Over the lifetime of the bond \$103 million will have been paid, which includes \$28 million of interest payments.
- COP Series 2016 Refunding combined the COP Series 2005 balance of \$14.4 million and the COP Series 2006 balance of \$45.1 million for a refunding issue of \$58.4 million. This refunding will save the taxpayers a net present value amount of \$8.2 million and a nominal amount of \$8.9 million over the course of payments from FY 2017 to FY 2027. It is serviced using 1.5 mill revenue and it will be paid in full on January 1, 2026. The balance will be \$29.5 million as of June 30, 2021 after paying \$5.6 million in principal for the 20/21 fiscal year.
- The Bus Lease Purchase was issued on December 18, 2014 for \$8.1 million. The proceeds were used to purchase 50 compressed natural gas (CNG) buses. It is serviced using 1.5 mill revenue and it will be paid in full on October 1, 2023. The balance will be \$2.8 million as of June 30, 2021 after paying \$915 thousand in principal for the 20/21 fiscal year.
- The District entered into a new four-year lease agreement in the amount of \$12 million for the use of 32,000 Chrome Book laptops in response to the COVID – 19 pandemic and the need for online learning options. The first payment of \$2.6 million was made July 2020. This lease will retire July 2023.
- QZAB 2004 will be retired November 2020 with a final payment of \$3,312,000.
- SBE Bond 2014 retired July 2020.
- After the 20/21 fiscal year principal payments of \$18.6 million and interest of \$5.8 million the district will have \$114.3 million of outstanding debt as of June 30, 2021.

COMBINED SUMMARY – ALL FUNDS/ ALL PROJECTS
2020-2021 DEBT SERVICE ACTIVITY

	SBE & COBI BONDS 210	SPECIAL ACT BONDS 220	REV ANT NOTE 2011 230	DISTRICT BONDS 250	OTHER DEBT SERVICE 290	TOTAL
STATE SOURCES:						
CO&DS DISTRIBUTED TO DISTRICTS	\$0.00	\$0.00	\$0.00	\$0.00	\$0.00	\$0.00
CO&DS WITHHELD FOR SBE/COBI BONDS	\$189,557.50	\$0.00	\$0.00	\$0.00	\$0.00	\$189,557.50
COST OF ISSUING BONDS	\$0.00	\$0.00	\$0.00	\$0.00	\$0.00	\$0.00
RACING COMMISSION FUNDS	\$0.00	\$223,250.00	\$0.00	\$0.00	\$0.00	\$223,250.00
PUBLIC EDUCATION CAPITAL OUTLAY	\$0.00	\$0.00	\$0.00	\$0.00	\$0.00	\$0.00
TOTAL STATE SOURCES	\$189,557.50	\$223,250.00	\$0.00	\$0.00	\$0.00	\$412,807.50
LOCAL SOURCES:						
INTEREST AND SINKING TAX	\$0.00	\$0.00	\$0.00	\$0.00	\$0.00	\$0.00
INTEREST INCLUDING PROFIT ON						
INVESTMENTS	\$0.00	\$0.00	\$0.00	\$0.00	\$0.00	\$0.00
TOTAL LOCAL SOURCES	\$0.00	\$0.00	\$0.00	\$0.00	\$0.00	\$0.00
OTHER FINANCING SOURCES:						
FEDERAL DIRECT	\$0.00	\$0.00	\$0.00	\$0.00	\$2,620,632.30	\$2,620,632.30
SALE OF BONDS	\$0.00	\$0.00	\$0.00	\$0.00	\$0.00	\$0.00
1011.14 LOAN	\$0.00		\$0.00			
TOTAL OTHER FINANCING SOURCES	\$0.00	\$0.00	\$0.00	\$0.00	\$2,620,632.30	\$2,620,632.30
TRANSFERS IN:						
FROM GENERAL FUND	\$0.00	\$0.00	\$0.00	\$0.00	\$2,619,058.56	\$2,619,058.56
FROM CAPITAL OUTLAY FUNDS	\$0.00	\$0.00	\$0.00	\$7,446,570.00	\$11,709,950.75	\$19,156,520.75
INTERFUND (DEBT SERVICE ONLY)	\$0.00	\$0.00	\$0.00	\$0.00	\$0.00	\$0.00
TOTAL TRANSFER IN	\$0.00	\$0.00	\$0.00	\$7,446,570.00	\$14,329,009.31	\$21,775,579.31
FUND BALANCES (JULY 1, 2020)	\$22,962.44	\$450,171.08	\$2,564.27	\$8,083,989.45	\$31,055,053.53	\$39,614,740.77
TOTAL EST. REVENUES, OTHER FINANCING SOURCES AND FUND BALANCES	\$212,519.94	\$673,421.08	\$2,564.27	\$15,530,559.45	\$48,004,695.14	\$64,423,759.88
APPROPRIATIONS:						
DEBT SERVICE (FUNCTION 9200)						
REDEMPTION OF PRINCIPAL	\$100,000.00	\$0.00	\$0.00	\$5,225,000.00	\$13,364,671.54	\$18,689,671.54
INTEREST	\$31,600.00	\$0.00	\$0.00	\$2,217,075.00	\$3,570,370.07	\$5,819,045.07
DUES AND FEES	\$0.00	\$0.00	\$0.00	\$4,495.00	\$14,600.00	\$19,095.00
TOTAL APPROPRIATIONS	\$131,600.00	\$0.00	\$0.00	\$7,446,570.00	\$16,949,641.61	\$24,527,811.61
OTHER FINANCING USES:						
TRANSFERS OUT (FUNCTION 9700)						
TO GENERAL FUND	\$0.00	\$0.00	\$0.00	\$0.00	\$0.00	\$0.00
TO CAPITAL OUTLAY FUNDS	\$0.00	\$0.00	\$0.00	\$0.00	\$0.00	\$0.00
INTERFUND (DEBT SERVICE ONLY)	\$0.00	\$0.00	\$0.00	\$0.00	\$0.00	\$0.00
TOTAL TRANSFERS OUT	\$0.00	\$0.00	\$0.00	\$0.00	\$0.00	\$0.00
TOTAL OTHER FINANCING USES	\$0.00	\$0.00	\$0.00	\$0.00	\$0.00	\$0.00
FUND BALANCES (JUNE 30, 2021)	\$80,919.94	\$673,421.08	\$2,564.27	\$8,083,989.45	\$31,055,053.53	\$39,895,948.27
TOTAL APPRS, OTHER FINANCING USES & FUND BALANCES	\$212,519.94	\$673,421.08	\$2,564.27	\$15,530,559.45	\$48,004,695.14	\$64,423,759.88

DEBT SERVICE ANALYSIS OF EXPENDITURES AND REVENUES



STATE BOARD OF EDUCATION AND CAPITAL OUTLAY BOND ISSUE (SBE AND COBI BONDS)
2020-2021 DEBT SERVICE

	2018-2019 ACTUAL	2019-2020 ACTUAL	2020-2021 ESTIMATED	DIFFERENCE 2019-20 vs 2020-21
ESTIMATED REVENUE:				
STATE SOURCES:				
CO/DS WITHHELD FOR SBE/COBI BONDS	\$221,119.54	\$181,815.96	\$189,557.50	\$7,741.54
SBE/COBI INTEREST	\$476.45	\$253.61	\$0.00	(\$253.61)
TOTAL STATE SOURCES	\$221,595.99	\$182,069.57	\$189,557.50	\$7,487.93
LOCAL SOURCES:				
TOTAL LOCAL SOURCES	\$0.00	\$100,000.00	\$0.00	(\$100,000.00)
TOTAL LOCAL SOURCES	\$0.00	\$100,000.00	\$0.00	(\$100,000.00)
OTHER FINANCING SOURCES:				
SALE OF BONDS	\$0.00	\$5,398.20	\$0.00	(\$5,398.20)
BEGINNING FUND BALANCE (JULY 1, 2020)				
RESERVED FOR DEBT SERVICE	\$31,066.27	\$25,854.20	\$22,962.44	(\$2,891.76)
ADJUSTMENT TO FUND BALANCE				
TOTAL EST. REVENUE/ FUND BALANCES	\$252,662.26	\$313,321.97	\$212,519.94	(\$100,802.03)
APPROPRIATIONS:				
OTHER EXPENSES	\$0.00	\$105,185.20	\$0.00	(\$105,185.20)
TRANSFER OUT	\$0.00	\$0.00	\$0.00	\$0.00
REDEMPTION OF PRINCIPAL	\$180,000.00	\$145,000.00	\$100,000.00	(\$45,000.00)
INTEREST	\$46,707.50	\$39,509.14	\$31,600.00	(\$7,909.14)
DUES AND FEES	\$100.40	\$665.19	\$0.00	(\$665.19)
TOTAL APPROPRIATIONS	\$226,807.90	\$290,359.53	\$131,600.00	(\$158,759.53)
ENDING FUND BALANCE (JUNE 30, 2021)				
RESERVED FOR DEBT SERVICE	\$25,854.20	\$22,962.44	\$80,919.94	\$57,957.50
TOTAL APPRS/ FUND BALANCES	\$252,662.10	\$313,321.97	\$212,519.94	(\$100,802.03)

SPECIAL ACT BONDS (RACETRACK)

2020-2021 DEBT SERVICE FUND

	2018-2019 ACTUAL	2019-2020 ACTUAL	2020-2021 ESTIMATED	DIFFERENCE 2019-20 vs 2020-21
ESTIMATED REVENUE:				
STATE SOURCES:	\$223,250.00	\$223,250.00	\$223,250.00	\$0.00
TOTAL STATE SOURCES	\$223,250.00	\$223,250.00	\$223,250.00	\$0.00
LOCAL SOURCES:				
INTEREST INCLUDING PROFIT ON INVESTMENTS	\$0.00	\$0.00	\$0.00	\$0.00
TOTAL LOCAL SOURCES	\$0.00	\$0.00	\$0.00	\$0.00
OTHER FINANCING SOURCES:				
REFUNDS	\$0.00	\$0.00	\$0.00	\$0.00
BEGINNING FUND BALANCE (JULY 1, 2020)				
RESERVED FOR DEBT SERVICE	\$353,671.08	\$226,921.08	\$450,171.08	\$223,250.00
TOTAL EST. REVENUE/ FUND BALANCES	\$576,921.08	\$450,171.08	\$673,421.08	\$223,250.00
APPROPRIATIONS:				
OTHER EXPENSES	\$0.00	\$0.00	\$0.00	\$0.00
TRANSFER OUT	\$350,000.00	\$0.00	\$0.00	\$0.00
REDEMPTION OF PRINCIPAL	\$0.00	\$0.00	\$0.00	\$0.00
INTEREST	\$0.00	\$0.00	\$0.00	\$0.00
DUES AND FEES	\$0.00	\$0.00	\$0.00	\$0.00
TOTAL APPROPRIATIONS	\$350,000.00	\$0.00	\$0.00	\$0.00
ENDING FUND BALANCE (JUNE 30, 2021)				
RESERVED FOR DEBT SERVICE	\$226,921.08	\$450,171.08	\$673,421.08	\$223,250.00
TOTAL APPRS/ FUND BALANCES	\$576,921.08	\$450,171.08	\$673,421.08	\$223,250.00

REVENUE ANTICIPATION NOTE - SERIES 2011 – 1011.14 BUS PURCHASE

2020-2021 DEBT SERVICE FUND

	2018-2019 ACTUAL	2019-2020 ACTUAL	2020-2021 ESTIMATED	DIFFERENCE 2019-20 vs 2020-21
ESTIMATED REVENUE:				
STATE SOURCES:	\$0.00	\$0.00	\$0.00	\$0.00
TOTAL STATE SOURCES	\$0.00	\$0.00	\$0.00	\$0.00
LOCAL SOURCES:				
INTEREST INCLUDING PROFIT ON INVESTMENTS	\$0.00	\$0.00	\$0.00	\$0.00
TOTAL LOCAL SOURCES	\$0.00	\$0.00	\$0.00	\$0.00
OTHER FINANCING SOURCES:				
FROM CAPITAL OUTLAY	\$0.00	\$0.00	\$0.00	\$0.00
1011.14 LOAN	\$0.00	\$0.00	\$0.00	\$0.00
TOTAL OTHER FINANCING SOURCES	\$0.00	\$0.00	\$0.00	\$0.00
BEGINNING FUND BALANCE (JULY 1, 2020)				
RESERVED FOR DEBT SERVICE	\$2,564.27	\$2,564.27	\$2,564.27	\$0.00
TOTAL EST. REVENUE/ FUND BALANCES	\$2,564.27	\$2,564.27	\$2,564.27	\$0.00
APPROPRIATIONS:				
OTHER EXPENSES	\$0.00	\$0.00	\$0.00	\$0.00
TRANSFER OUT	\$0.00	\$0.00	\$0.00	\$0.00
REDEMPTION OF PRINCIPAL	\$0.00	\$0.00	\$0.00	\$0.00
INTEREST	\$0.00	\$0.00	\$0.00	\$0.00
DUES AND FEES	\$0.00	\$0.00	\$0.00	\$0.00
TOTAL APPROPRIATIONS	\$0.00	\$0.00	\$0.00	\$0.00
ENDING FUND BALANCE (JUNE 30, 2021)				
RESERVED FOR DEBT SERVICE	\$2,564.27	\$2,564.27	\$2,564.27	\$0.00
TOTAL APPRS/ FUND BALANCES	\$2,564.27	\$2,564.27	\$2,564.27	\$0.00

GENERAL OBLIGATION BOND ISSUE (GOBI)

2020-2021 DEBT SERVICE

	2018-2019 ACTUAL	2019-2020 ACTUAL	2020-2021 ESTIMATED	DIFFERENCE 2019-20 vs 2020-21
ESTIMATED REVENUE:				
STATE SOURCES:	\$0.00	\$0.00	\$0.00	\$0.00
TOTAL STATE SOURCES	\$0.00	\$0.00	\$0.00	\$0.00
OTHER SOURCES:				
TOTAL OTHER SOURCES	\$0.00	\$0.00	\$0.00	\$0.00
LOCAL SOURCES:				
TAX REDEMPTION	\$3.66	\$0.11	\$0.00	(\$0.11)
INTEREST INCLUDING PROFIT ON INVESTMENTS	\$160,496.20	\$114,733.81	\$0.00	(\$114,733.81)
TOTAL LOCAL SOURCES	\$160,499.86	\$114,733.92	\$0.00	(\$114,733.92)
OTHER FINANCING SOURCES AND TRANSFERS:				
PROCEEDS FROM BOND SALES	\$0.00	\$0.00	\$0.00	\$0.00
TRANSFERS FROM CAPITAL OUTLAY	\$7,455,070.00	\$7,450,070.00	\$7,446,570.00	(\$3,500.00)
BEGINNING FUND BALANCE (JULY 1, 2020)	\$7,812,630.39	\$7,968,755.53	\$8,083,989.45	\$115,233.92
TOTAL EST. REVENUE/ FUND BALANCES	\$15,428,200.25	\$15,533,559.45	\$15,530,559.45	(\$3,000.00)
APPROPRIATIONS (Expenditures):				
DEBT SERVICE (FUNCTION/OBJECTS):				
REDEMPTION OF PRINCIPAL	\$4,735,000.00	\$4,975,000.00	\$5,225,000.00	\$250,000.00
INTEREST	\$2,714,825.00	\$2,472,075.00	\$2,217,075.00	(\$255,000.00)
DUES AND FEES	\$9,619.72	\$2,495.00	\$4,495.00	\$2,000.00
COST OF ISSUANCE - 2014 SALES TAX REV				
BONDS	\$0.00	\$0.00	\$0.00	\$0.00
TRANSFERS WITHIN DEBT SERVICE	\$0.00	\$0.00	\$0.00	\$0.00
TOTAL APPROPRIATIONS	\$7,459,444.72	\$7,449,570.00	\$7,446,570.00	(\$3,000.00)
ENDING FUND BALANCE (JUNE 30, 2021)				
RESERVED FOR DEBT SERVICE	\$7,968,755.53	\$8,083,989.45	\$8,083,989.45	\$0.00
TOTAL APPRS/ FUND BALANCES	\$15,428,200.25	\$15,533,559.45	\$15,530,559.45	(\$3,000.00)

OTHER DEBT SERVICE
2020-2021 DEBT SERVICE FUND

	2018-2019 ACTUAL	2019-2020 ACTUAL	2020-2021 ESTIMATED	DIFFERENCE 2019-20 vs 2020-21
ESTIMATED REVENUE:				
STATE SOURCES:	\$0.00	\$0.00	\$0.00	\$0.00
TOTAL STATE SOURCES	\$0.00	\$0.00	\$0.00	\$0.00
LOCAL SOURCES:				
INTEREST INCLUDING PROFIT ON INVESTMENTS	\$790,849.35	\$413,561.09	\$0.00	(\$413,561.09)
TOTAL LOCAL SOURCES	\$790,849.35	\$413,561.09	\$0.00	(\$377,288.26)
TRANSFERS:				
FROM GENERAL	\$0.00	\$0.00	\$2,619,058.56	\$2,619,058.56
FROM CAPITAL OUTLAY	\$11,585,165.56	\$12,011,746.22	\$11,709,950.75	(\$301,795.47)
TOTAL TRANSFERS	\$11,585,165.56	\$12,011,746.22	\$14,329,009.31	\$2,317,263.09
OTHER FINANCING SOURCES:				
FEDERAL DIRECT	\$2,611,823.11	\$2,633,605.44	\$2,620,632.30	(\$12,973.14)
PROCEEDS FROM SALE OF BONDS	\$0.00	\$0.00	\$0.00	\$0.00
TOTAL OTHER FINANCING SOURCES	\$2,611,823.11	\$2,633,605.44	\$2,620,632.30	(\$12,973.14)
BEGINNING FUND BALANCE (JULY 1, 2020)				
RESERVED FOR DEBT SERVICE	\$23,848,350.80	\$27,403,543.75	\$31,055,053.53	\$3,651,509.78
ADJUSTMENT TO BEGINNING FUND BALANCE				
TOTAL EST. REVENUE/ FUND BALANCES	\$38,836,188.82	\$42,462,456.50	\$48,004,695.14	\$5,542,238.64
APPROPRIATIONS:				
OTHER EXPENSES (LEASE PAYMENT)	\$0.00	\$0.00	\$2,619,058.56	\$2,619,058.56
TRANSFER OUT (CO)	\$0.00	\$0.00	\$0.00	\$0.00
REDEMPTION OF PRINCIPAL	\$7,575,625.63	\$7,688,488.09	\$10,745,612.98	\$3,057,124.89
INTEREST	\$3,839,169.44	\$3,705,814.88	\$3,570,370.07	(\$135,444.81)
DUES AND FEES	\$17,850.00	\$13,100.00	\$14,600.00	\$1,500.00
TOTAL APPROPRIATIONS	\$11,432,645.07	\$11,407,402.97	\$16,949,641.61	\$5,542,238.64
ENDING FUND BALANCE (JUNE 30, 2021)				
RESERVED FOR DEBT SERVICE	\$27,403,543.75	\$31,055,053.53	\$31,055,053.53	\$0.00
TOTAL APPRS/ FUND BALANCES	\$38,836,188.82	\$42,462,456.50	\$48,004,695.14	\$5,542,238.64

FIDUCIARY FUND

FIDUCIARY FUNDS OVERVIEW

The fund totals \$43,342 and represents 0.01% of the total budget (\$528 million).

TRUST AND AGENCY

Activity is the primary emphasis of this portion of the budget. This accounts for assets held by the School District acting in the capacity of trustee or agent for external or internal entities. The Board maintains one trust fund, entitled the Frank Stoutamire Trust, which is held in trust to be spent for vocational education.

STUDENT ACTIVITY INTERNAL ACCOUNT PROGRAMS

This budget, within the fiduciary fund, accounts for resources of the school internal funds which are used to administer money collected at the schools in connection with school, student athletics, class, and club activities. These dollars are not formally incorporated as part of the district budget, but are disclosed on the Annual Financial Report and are controlled by each school site and audited annually. The data reflected in the School Internal Student Activity Accounts chart is for informational purposes only. Parent, community and student involvement is very active in schools and represents a very significant support element to the individual school programs at each site. The significance of this support is reflected by receipts totaling **\$11.2 million** and expenditures totaling **\$11.5 million** in FY 2020. Leon County Schools perform various fund raising events to finance extra-curricular activities and to augment classroom activities. The student's education does not end in the classroom. By participating in extra-curricular activities the students learn valuable social skills which will be vital to their success as contributing members in our society. The lessons a student learns from being on a team and doing his/her assigned job in cooperation with others to achieve a goal is vital in all aspects of adult life. Additionally, the gratification and self-esteem developed from these experiences enables young people to function more productively in society when they achieve adulthood. The District could not possibly support all of the extra-curricular activities without the efforts of parents and students spending countless hours to raise the necessary funds. This is a result over the past 10 years of revenue increases below inflation and the number of extra-curricular activities not just maintaining the same level, but increasing. One factor of increasing extra-curricular activities is to ensure female students are equitably served compared to male students.



TRUST AND AGENCY FUND – ESTIMATED REVENUE, APPROPRIATIONS AND BALANCES
2020-2021

ESTIMATED REVENUES/BEGINNING FUND BALANCE:	2019-2020	ORIGINAL ESTIMATED	INCREASE/ -DECREASE
FRANK STOUTAMIRE TRUST FUND	ACTUAL	2020-2021	
INVESTMENT INCOME	\$1,052.89	\$500.00	(\$552.89)
MISCELLANEOUS	\$0.00	\$0.00	\$0.00
FUND BALANCE	\$41,789.82	\$42,842.71	\$1,052.89
TOTAL ESTIMATED REVENUES/FUND BALANCES	\$42,842.71	\$43,342.71	\$500.00
ESTIMATED APPROPRIATIONS/ENDING FUND BALANCE:			
INSTRUCTION	\$22,842.71	\$23,342.71	\$500.00
TOTAL APPROPRIATIONS	\$22,842.71	\$23,342.71	\$500.00
ENDING FUND BALANCE:			
RESTRICTED	\$20,000.00	\$20,000.00	\$0.00
TOTAL EST. APPROPRIATIONS/ENDING FUND BALANCE	\$42,842.71	\$43,342.71	\$500.00

STATEMENT OF REVENUE, EXPENDITURES & BALANCES

SCHOOL INTERNAL STUDENT ACTIVITY ACCOUNTS

FY 2019-2020 ANNUAL REPORT

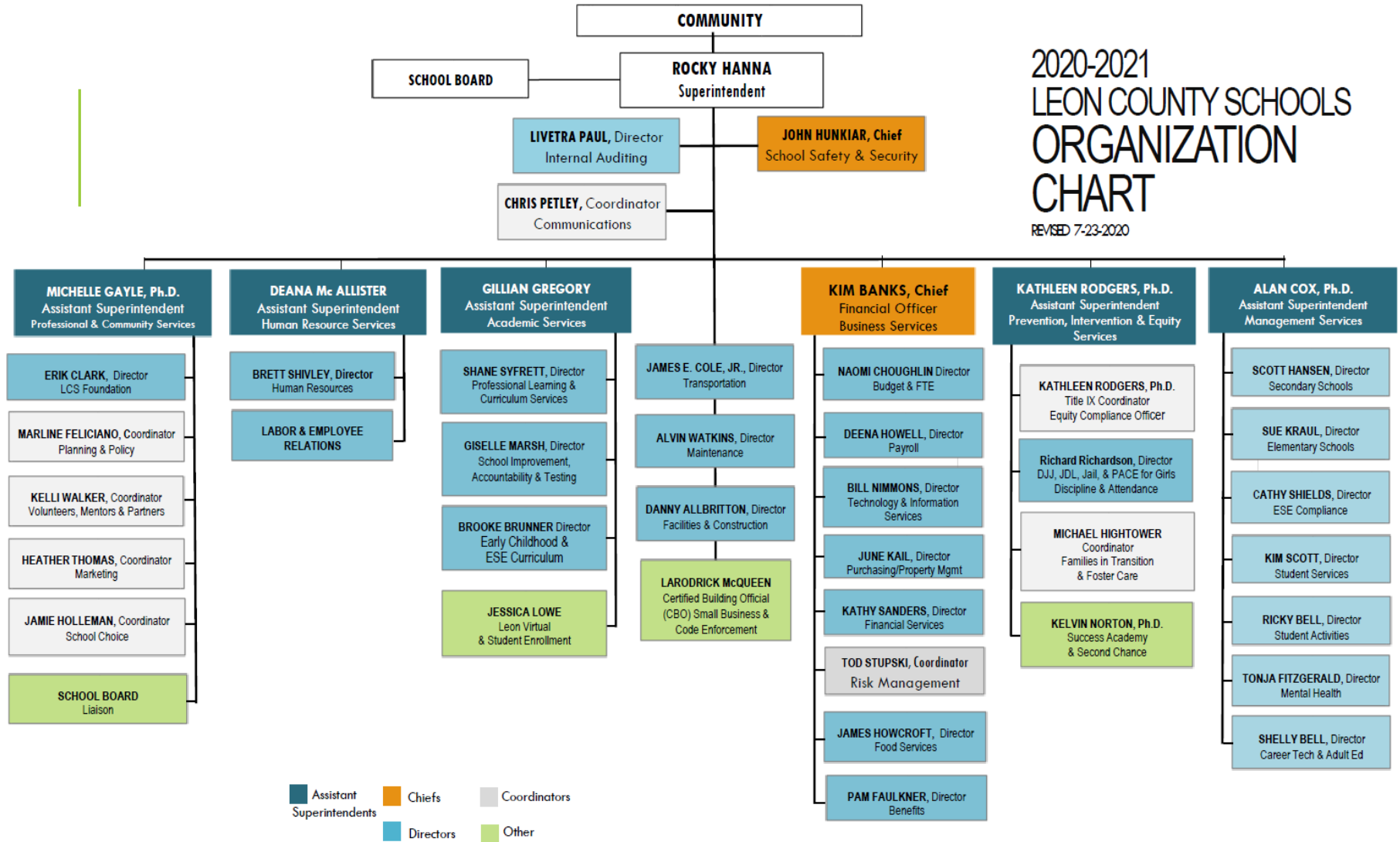
Facility	Beginning Balance	19/20 FY Credits	19/20 Debits	Ending Balance
LEON HIGH	\$ 312,872.21	\$ 1,141,375.62	\$ 1,157,003.51	\$ 297,244.32
SULLIVAN ELEMENTARY	\$ 18,099.87	\$ 132,576.16	\$ 111,031.62	\$ 39,644.41
COBB MIDDLE SCHOOL	\$ 55,690.05	\$ 68,332.93	\$ 93,237.60	\$ 30,785.38
HARTSFIELD ELEMENTARY SCHOOL	\$ 16,879.83	\$ 139,061.17	\$ 129,593.88	\$ 26,347.12
RICKARDS HIGH SCHOOL	\$ 110,494.13	\$ 412,189.45	\$ 388,001.24	\$ 134,682.34
SABAL PALM ELEMENTARY SCHOOL	\$ 724.35	\$ 26,065.93	\$ 20,180.89	\$ 6,609.39
RUEDIGER ELEMENTARY SCHOOL	\$ 25,502.12	\$ 38,155.85	\$ 32,609.17	\$ 31,048.80
RAA MIDDLE SCHOOL	\$ 66,161.77	\$ 152,896.20	\$ 140,370.52	\$ 78,687.45
WOODVILLE SCHOOL	\$ 20,230.35	\$ 35,349.96	\$ 33,632.61	\$ 21,947.70
GODBY HIGH SCHOOL	\$ 126,002.70	\$ 334,281.48	\$ 328,557.47	\$ 131,726.71
OAK RIDGE ELEMENTARY SCHOOL	\$ 11,937.26	\$ 61,114.55	\$ 59,900.92	\$ 13,150.89
SAIL	\$ 61,325.69	\$ 114,982.70	\$ 98,189.82	\$ 78,118.57
GRIFFIN MIDDLE SCHOOL	\$ 10,864.35	\$ 50,204.88	\$ 45,901.33	\$ 15,167.90
RILEY ELEMENTARY SCHOOL	\$ 17,111.69	\$ 17,588.09	\$ 13,265.76	\$ 21,434.02
NIMS MIDDLE SCHOOL	\$ 7,011.13	\$ 25,797.19	\$ 26,360.59	\$ 6,447.73
PINEVIEW ELEMENTARY SCHOOL	\$ 7,629.39	\$ 64,282.07	\$ 60,939.14	\$ 10,972.32
LIVELY TECHNICAL COLLEGE	\$ 1,915,982.05	\$ 3,549,521.06	\$ 4,161,126.96	\$ 1,304,376.15
GILCHRIST ELEMENTARY SCHOOL	\$ 79,690.97	\$ 252,211.01	\$ 217,251.70	\$ 114,650.28
ASTORIA PARK ELEMENTARY SCHOOL	\$ 26,120.68	\$ 36,574.66	\$ 39,446.28	\$ 23,249.06
EVERHART TRAINABLE CENTER	\$ 24,555.44	\$ 9,459.70	\$ 5,818.50	\$ 28,196.64
MOORE ELEMENTARY SCHOOL	\$ 24,812.93	\$ 133,422.90	\$ 117,366.66	\$ 40,869.17
SEALEY ELEMENTARY SCHOOL	\$ 17,432.49	\$ 32,549.83	\$ 32,535.93	\$ 17,446.39
APALACHEE ELEMENTARY SCHOOL	\$ 24,959.68	\$ 84,738.22	\$ 83,868.92	\$ 25,828.98
FAIRVIEW MIDDLE SCHOOL	\$ 39,417.14	\$ 125,789.57	\$ 108,927.60	\$ 56,279.11
HERITAGE TRAILS COMMUNITY SCHO	\$ (1,366.03)	\$ 6,022.37	\$ 3,669.07	\$ 987.27
KILLEARN LAKES ELEMENTARY SCH.	\$ 123,248.20	\$ 154,229.30	\$ 161,003.73	\$ 116,473.77
CHAIRES ELEMENTARY SCHOOL	\$ 19,500.52	\$ 58,020.70	\$ 50,987.56	\$ 26,533.66
SPRINGWOOD ELEMENTARY SCHOOL	\$ 21,771.82	\$ 49,860.31	\$ 55,037.83	\$ 16,594.30
DESOTO TRAIL ELEMENTARY SCHOOL	\$ 55,843.16	\$ 113,506.68	\$ 114,301.90	\$ 55,047.94
BUCK LAKE ELEMENTARY SCHOOL	\$ 44,580.38	\$ 251,813.41	\$ 242,403.61	\$ 53,990.18
DEERLAKE MIDDLE SCHOOL	\$ 158,996.44	\$ 474,751.96	\$ 455,635.44	\$ 178,112.96
FT. BRADEN SCHOOL	\$ 42,461.75	\$ 68,306.00	\$ 49,086.20	\$ 61,681.55
LINCOLN HIGH SCHOOL	\$ 380,610.64	\$ 897,798.03	\$ 872,541.44	\$ 405,867.23
HAWKS RISE	\$ 32,868.20	\$ 120,915.84	\$ 92,589.42	\$ 61,194.62
LAWTON CHILES HIGH SCHOOL	\$ 394,477.12	\$ 848,334.09	\$ 908,493.56	\$ 334,317.65
SWIFT CREEK MIDDLE SCHOOL	\$ 158,481.66	\$ 282,305.75	\$ 245,066.43	\$ 195,720.98
CANOPY OAKS ELEMENTARY	\$ 21,894.40	\$ 59,349.84	\$ 61,162.94	\$ 20,081.30
ROBERTS ELEMENTARY SCHOOL	\$ 26,212.89	\$ 437,226.65	\$ 430,859.45	\$ 32,580.09
BOND ELEMENTARY SCHOOL	\$ 7,660.96	\$ 32,516.88	\$ 20,593.86	\$ 19,583.98
MONTFORD MIDDLE SCHOOL	\$ 107,998.38	\$ 123,554.54	\$ 125,323.52	\$ 106,229.40
CONLEY ELEMENTARY SCHOOL	\$ 54,707.87	\$ 126,998.75	\$ 115,699.94	\$ 66,006.68
SUCCESS ACADEMY AT GHAZVINI LC	\$ 4,449.11	\$ 3,489.07	\$ 2,200.29	\$ 5,737.89
ADULT AND COMMUNITY EDUCATION	\$ 241,360.69	\$ 54,829.71	\$ 67,420.01	\$ 228,770.39
	\$ 4,917,266.43	\$11,202,351.06	\$11,579,194.82	\$ 4,540,422.67

INFORMATION SECTION

2020-2021 ORGANIZATIONAL CHART

2020-2021 LEON COUNTY SCHOOLS ORGANIZATION CHART

REVISED 7-23-2020



HOW TO READ THE BUDGET

This budget is consistent with the State Department of Education's "RED BOOK" format, which is also known as the Financial and Program Cost Accounting and Reporting for Florida Schools.

FUND:

The books and financial records of the Leon County School Board are maintained using the fund concept of accounting. The National Council on Governmental Accounting and Financial Reporting Principles defines fund accounting as follows:

"A fund is a fiscal and accounting entity with a self-balancing set of accounts recording cash and other financial resources, together with all related liabilities and residual equities or balances, and changes therein, which are segregated for the purpose of carrying on specific activities or attaining certain objectives in accordance with special regulations, restrictions, or limitations."

To expedite management control and facilitate legislative oversight budgeting, procedures also segregate various funds. The following funds, programs, and activities are included in this document. The numbers beside the alphabetic description are used in the accounting system for coding purposes:

FUNDS: Governmental Funds

100 General Fund

200 Debt Service Funds

300 Capital Projects Funds

400 Special Revenue Funds

700 Proprietary Funds

800 Fiduciary Funds

- (1) **THE GENERAL OPERATING FUND:** These funds cover day-to-day expenses for salaries; benefits; purchased services; energy; materials and supplies; furniture; fixtures; equipment; and other expenses for all employees not hired through a federal grant or food service activity.
- (2) **THE DEBT SERVICE FUNDS:** These funds are used to account for the payment of interest and principal of general long-term debt. These funds incorporate repayment on the voter-approved General Obligation Bond Issue (GOBI), as well as several state bond issues incurred on behalf of the Board. Debt payments on any capital outlay related loans, such as a Certificate of Participation (COP), are also paid in this fund.
- (3) **THE CAPITAL PROJECTS FUNDS:** These funds are used to account for the acquisition or construction of capital facilities.
- (4) **THE SPECIAL REVENUE FUNDS:** These funds are used to account for operations for which revenues have been specifically designated by law or contract. These revenues cannot be diverted to other uses. These funds generally incorporate food service operations and all federal projects.
- (5) **THE PROPRIETARY FUNDS:** These funds are used to account for a government's business-type activities. For example, this fund would be used for an activity that received a significant portion of its funding through user charges.
- (6) **THE FIDUCIARY FUNDS:** Fiduciary funds should be used to report assets held in a trustee or agency capacity for others and therefore cannot be used to support the government's own programs.

REVENUES are categorized by fund, source, and appropriation. Since law usually determines revenues, revenue accounts are structured by source (federal, state, and local) and specific appropriation.

The District receives federal revenue through two methods: (1) Directly from the federal source and (2) indirectly from a second party. Less than 10% of all federal revenue is received directly from Federal sources. Those include student financial aid and revenues for salaries of Reserve Officer Training Candidate (ROTC) instructors. The greatest portion of the indirect federal revenues comes to the District from the Florida Department of Education (FDOE). FDOE is the primary recipient of the funds and it is their responsibility to allocate them to Districts based on approved Federal applications.

State revenue comes to the District in restricted and unrestricted amounts. Restricted revenues, such as revenues specifically for instructional materials or transportation, must only be spent for those purposes. Other restricted state revenues include state grants received upon approval of the grant applications. Unrestricted state revenues may be spent for any lawful purpose. For example, Florida Education Finance Program (FEFP) revenue, generated on a program per student basis, can be used for any lawful educational purpose, as long as 80% to 90% is spent within the program the revenue was derived from.

Local revenues are generated through property taxes. The revenue sources all districts in the state levy without public approval are the Required Local Effort (RLE), Discretionary Millage, Supplemental Discretionary Millage, and the 1.50 mill Capital Outlay. The RLE Millage is set for each district by the state legislature and it must be levied for districts to receive the matching state portion of the FEFP.

Revenues raised from the 1.50 mill Capital Outlay levy primarily may only be used for capital outlay purposes. Exceptions are the ability to transfer a portion of these funds for emergency and preventative maintenance and the ability to use these funds to pay for property liability insurance premiums.

A voter approved ½ cent sales tax is levied for Capital Project purposes. This revenue source ends after December 31, 2027.

Other local revenues include various dues and fees for fee paid programs, gate receipts for extracurricular events, and donations.

EXPENDITURES are segregated for reporting purposes by cost center, function, and object.

COST CENTER is a school, department, or location.

FUNCTION means the action or purpose for which a person or thing is used or exists. Function includes the activities or actions, which are performed to accomplish the objectives of the enterprise. The activities of the school system are classified into six broad areas.

Instruction (5000's) – The activities dealing directly with the teaching of pupils or the interaction between teacher and pupils. Instruction is further classified as Basic (K-12), Exceptional, Career Education, Adult General, Prekindergarten, and Other Instruction. “Other Instruction” is provided for programs such as recreation and leisure courses, Lifelong Learning programs or Adults with Disabilities.

Instructional Support Services (6000's) – Provides administrative, technical (such as guidance and health), and logistical support to facilitate and enhance instruction. Instructional Support Services exist as adjuncts for the fulfillment of behavioral objectives of the instruction functions, rather than as separate entities. The major cost for Instructional Support is personnel, although some supplies and operational costs are generated in Instructional Support Services include Student Personnel Services (Encompasses attendance and social work, guidance services, health services, psychological services, parental involvement, and diagnostic and child specialists), Instructional Media, Instruction and Curriculum Development Services, Instructional Staff Training Services, and Instructional Related Technology.

General Support Services (7000's) – Activities associated with establishing policy, operating schools and the school system, and providing the essential facilities and services for the staff and students. This includes salaries and expenses for the Board, General Administration (Superintendent's Office), School Administration (Office of the Principal), Facilities Acquisition and Construction, Fiscal Services, Food Services, Central Services (Planning, Research, Development and Evaluation Services, Information

Services, Statistical Services, Personnel Services, Internal Services).

Maintenance of Plant (8100) - Activities concerned with maintaining the grounds, buildings and equipment at an acceptable level of efficiency through repairs or preventive maintenance.

Administrative Technology Services (8200) – Activities concerned with supporting the school district’s information technology systems, including supporting administrative networks, maintaining administrative information systems and processing data for administrative and managerial purposes.

Community Service (9100) – Community Services consist of those activities that are not directly related to providing education for pupils in a school system. These include non-instructional services provided by the school system for the community.

Debt Service (9200) – To record expenditures related to the issuance and retirement of debt, including issuance fees, principal and interest payments, and other debt related expenditures.

- **Other Capital Outlay (9300)** -To report capital expenditures not related to the acquisition and construction of facilities.

The following numeric system is prescribed by the “Redbook” to account for the different functions:

- 5000** Instructional Services
- 6100** Pupil Personnel Services
- 6200** Instructional Media Services
- 6300** Instruction and Curriculum Development Services
- 6400** Instructional Staff Training Services
- 6500** Instructional Related Technology
- 7100** Board of Education
- 7200** General Administration
- 7300** School Administration
- 7400** Facilities Acquisition and Construction
- 7500** Fiscal Services
- 7600** Food Services
- 7700** Central Services
- 7800** Pupil Transportation Services
- 7900** Operation of Plant
- 8100** Maintenance of Plant
- 8200** Administrative Technology Services
- 9100** Community Services
- 9200** Debt Service
- 9700** Transfer of Funds

This numeric system is used for reporting purposes to the FDOE and for monthly budget amendments to the Board.

OBJECT means the goods purchased or the service obtained. There are eight major object categories. The numeric system prescribed by the Redbook used for reporting to the FDOE and for presenting budget amendments to the Board accompanies each object description.

- 100** Salaries

- 200 Benefits
- 300 Purchased Services
- 400 Energy Service
- 500 Materials and Supplies
- 600 Capital Outlay
- 700 Other Expenses
- 900 Transfers

MEASUREMENT BASIS FOR BUDGET REVENUES AND EXPENDITURES

Generally accepted accounting principles for governmental entities are established by the Governmental Accounting Standards Board (GASB) and provide the foundation for financial accounting and reporting for school districts.

Basis of accounting refers to when revenues, expenditures, expenses and transfers and the related assets and liabilities are recognized in the accounts and reported in the financial statements. Generally accepted accounting principles require the use of the modified accrual basis of accounting for governmental funds. This means the revenues are recognized when they become both measurable and available to finance expenditures of the fiscal period. Expenditures are generally recognized when the related fund liability is incurred, if measurable.

Proprietary and fiduciary funds utilize the “full accrual” basis of accounting. That is, revenues and expenses are recognized when they occur, regardless of the timing of the related cash flows.

The Leon County Schools use the modified accrual for the governmental funds (general, special revenue, debt service, capital projects, and permanent).

Most grants accounted for in the special revenue funds require the expenditure of funds as the primary determinant of eligibility for funding. Therefore, the date of expenditure becomes the point of revenue recognition for the grant.

An encumbrance system which charges each purchase order, contract, or salary commitment to an appropriation is used as part of the budgetary accounting system. These transactions cease to be encumbrances when paid, canceled, or when the actual liability is recorded.

In June, 1999, the GASB issued Statement 34, Basic Financial Statements—and Management’s Discussion and Analysis—for State and Local Governments, which required all governments, including special-purpose governments such as school districts, to implement a new financial reporting model. Leon County Schools reported the year-end results for fiscal year 2001-2002 in this format for the first time. The model includes management’s discussion and analysis (MD&A), basic financial statements, notes to the financial statements, and certain other required supplementary information (RSI) other than MD&A.

- The MD&A is a component of Required Supplementary Information (RSI) that precedes the financial statements.
- The basic financial statements include 1) government-wide financial statements, 2) fund financial statements, and 3) notes to the financial statements.

The government-wide financial statements report information for the government as a whole, except for fiduciary funds. These statements reflect the economic resources measurement and the full accrual basis of accounting.

The fund financial statements for governmental, proprietary, and fiduciary funds follow government-wide financial statements. The governmental and enterprise fund statements reflect major funds and combined non-major funds rather than a fund-type presentation. Reconciliation is required to explain the differences between the change in fund balances reported in the fund financial statements and the change in net

assets reported in the government-wide financial statements. Reconciling items arise from differences in the measurement focuses of accounting between the statements, and certain required eliminations.

RSI is supplementary financial information that must be presented with the basic financial statements. Required budgetary comparisons include the original and final budgets for the general fund and each major special revenue fund that has a legally adopted annual budget.

One of the primary differences between the government-wide statements and the fund financial statements is the measurement focus and basis of accounting. The government-wide statements reflect the economic resources measurement focus and the full accrual basis of accounting, while the fund financial statements for governmental funds continue to reflect the current financial resources measurement focus and the modified accrual basis of accounting.

The budget is constructed to address the requirements of GASB 34 as it relates to the chart of accounts, student internal funds, and fiduciary funds.

GLOSSARY OF TERMS

Abatement - A reduction of previously recorded expenditure or receipt item by such things as refunds, rebates, and collections for loss or damage to school property.

Accrued Expense - Expenses, which have been incurred and have not been paid as of a given date.

Accrued Revenue - Levies made or other revenue earned and not collected regardless of whether due or not.

Activity Assignment - A classification of activities performed by a staff member, which indicates what a staff member does.

Administration - Those activities that have as their purpose the general regulation, direction, and control of the affairs of the school system that are system-wide and not confined to one school, subject, or narrow phase of school activity.

Adult Education, Public - Those organized public educational programs, other than regular full-time and summer elementary and secondary day school, community college, and college programs, which provide opportunities for adults and out-of-school youth to further their education, regardless of their previous educational attainment. Only those programs, which have as their primary purposes the development of skills, knowledge, habits, or attitudes, are included. This development may be brought about by formal instruction or by informal group leadership directed toward recognizable learning goals. Activities which are primarily social, recreational, or for the purpose of producing goods are not included.

Ad Valorem Taxes Levied by School System - Taxes levied by a school system on the assessed valuation of real and personal property located within the legal boundaries of the system. In Florida the legal boundary is the county.

Agency for Workforce Innovation (AWI) - The AWI is responsible for implementing policy in the areas of workforce development, welfare transition, unemployment compensation, labor market information, early learning and school readiness.

Aggregate Coverage - Layer of insurance protection above the loss fund (see Loss Fund). It is activated when the sum of all losses that falls under the SIR (Self-Insurance Retention) exceed the established loss fund.

Appropriations State - An authorization granted by the Legislature for specific purposes.

Appropriations, School Budget - An amount estimated to be spent for a specific school purpose.

Area of Responsibility - A subdivision of a Service Area consisting of activities that, regardless of their nature, have a common purpose directly related to the operational objective of the Service Area.

Assets - The entire property owned by a school system. See also Fixed Assets.

Attendance - the presence of a pupil a day school is in session. A pupil may be counted present only when he/she is actually at school, or is present at another place at a school activity which is authorized by the school, is a part of the program of the school, and is personally supervised by a member or members of the school staff. This may include field trips, athletic contests, music festivals, student conventions, and similar activities, when officially authorized under policies of the county school board. It does not include "making up" school work at home, or activities supervised or sponsored by private individuals or groups.

Average Daily Attendance (ADA) - In a given school year, the average daily attendance of a given school is the aggregate day's attendance of the school divided by the number of days school was actually in session. Florida law requires 180 days to be used as the divisor even in those cases in which the State Board of Education has authorized a shorter time.

Average Daily Membership (ADM) - In a given school year, the average daily membership for a given school is the aggregate day's membership of the school divided by the number of days school was actually in session.

Florida law requires a 180-day school term and 180 is used as the divisor, even in those cases in which the State Board of Education has authorized a shorter time.

ARRA Funds - American Recovery and Reinvestment Act (ARRA) - Federal funds appropriated to save or create jobs and to enhance teaching and learning.

Base Student Allocation (BSA) - A specific dollar amount funded on a per student basis. This amount is determined by the legislature each fiscal year. It is the factor in the Florida Education Finance Program (FEFP) that has the greatest monetary impact on funding in the formula.

Board of Education - Consists of the activities of the elected body that has been created according to State law and vested with responsibilities for educational activities in a given geographical area. This Service Area relates to the generic term and covers State boards, intermediate administrative unit boards, and local basic administrative unit boards.

Budget - A plan of financial operation incorporating an estimate of proposed expenditures for a given period or purpose and proposed means of financing them. In Florida, there is a state required budget, which can generally be described as a summary budget. Districts may, at their discretion, develop more detailed budget documents such as those described in the following discussion. The budget usually consists of three parts. The first part contains a message from the budget-making authority together with a summary of the proposed expenditures and the means of financing them. The second part consists of schedules supporting the summary. These schedules describe in detail the proposed expenditures and means of financing them together with information referencing prior year's actual revenues and expenditures and related data used to formulate the estimates. The third part is composed of drafts of the appropriations, revenue, and borrowing measures necessary to execute the budget.

Budgetary Accounts - Those accounts necessary to reflect budget operations and conditions, such as estimated revenue, appropriations, and encumbrances, and distinguished from proprietary accounts.

Budgetary Control - The control of management of the business affairs of the school system in accordance with an approved budget with the objective of maintaining expenditures within the authorized amounts.

Budgeting - Pertains to budget planning, formulation, administration, analysis, and evaluation.

Capital Outlay - Amounts paid for the acquisition of fixed assets or additions to fixed assets. Amounts expended for land or existing buildings, additions to buildings, remodeling of buildings, initial, additional and replacements of equipment, and improvements other than buildings, which are expected to have a useful life in excess of 1 year.

Categoricals - Money that the Legislature sends to school districts that legally can be spent only for certain purposes.

Central Administration Office - A building used primarily for housing personnel and equipment engaged in activities for purposes of the general regulation, direction, and control of the affairs of the school system that are system-wide and not confined to one school, subject, or narrow phase of school activity.

Certified Tax Roll - This is a certificate from the Property Appraiser, which lists the value of Real Property. The Property Appraiser certifies the value to be true and correct to the best of his knowledge and belief. Millage rate are assessed against this roll to generate revenue for the district.

Charter School - Essentially, this is a quasi-private school funded with FEFP dollars under contract to a school board. A group of people appoints a Board of Directors, applies to the District School Board and upon approval operates its school with its own educational agenda with more leeway in meeting state standards. Charter schools cannot charge tuition.

Class Size Reduction (CSR) - A funding source to address the constitutional amendment that there must be no classroom with more than 18 students in Pre-K through 3rd grade, 22 students in grades 4 through 8, and 25 student in grades 9 through 12. This requirement is for "core" subjects such as mathematics, science, English, and other languages. District level averages will be used to determine compliance from fiscal year 2003-2004

through fiscal year 2005-2006. School level averages will be used to determine compliance for fiscal years 2006-2007 and 2007-2008. In 2008-2009 the individual classrooms determine compliance.

Classification, Function - As applied to expenditures, this term means an activity aimed at accomplishing a major service or regulatory objective as a result of a specific expenditure.

Classification, Object - The type of goods or services purchased as a result of a specific expenditure.

Co-Curricular Activities - Co-curricular activities (experiences) are comprised of the group of school-sponsored activities, under the guidance or supervision of qualified adults, designed to provide opportunities for pupils to participate in experiences outside of the classroom on an individual basis, in small groups or large groups for purposes such as motivation, enjoyment, and improvement skills. In practice, participation usually is not required and credit usually is not given. When participation is required or credit given, the activity generally is considered to be a course of study.

Contingent Liabilities - Items that may become liabilities as a result of conditions undetermined at a given date, such as guarantees, pending lawsuits, judgments under appeal, and unsettled disputed claims.

Contracted Services - Services and related expenses rendered by personnel who are not on the payroll of the school system on a contractual basis.

Construction Contracts Payable - Amount owed on contracts for construction of buildings, structures, and other improvements.

CRE (Coordinated Review Effort) Review - A review conducted by the Florida Department of Education (FDOE) that tests controls for Food Service Programs. Exhaustive review and testing is applied to all phases of food service, such as reimbursement claiming; meal counts by free, reduced and paid students; and validity of reports. After failing 2 CRE reviews, FDOE beings withholding a percentage of the district's federal reimbursement. The withheld portion of federal reimbursements is remitted to the district when the CRE review is passed.

Day in Session - A day when school is open and the pupils are under the guidance and direction of teachers in the teaching process. On some days the school plant itself may be closed and the student body as a whole is engaged in school activities outside the school plant but under the guidance and direction of teachers. Such days should be considered days in session. Days when the school is closed for purposes such as holidays, teachers' in-service and inclement weather should not be considered days in session.

Days of Attendance - A day of attendance is when a pupil is present for the full day under the guidance and direction of a teacher while school is in session. If overcrowded conditions cause two separate sessions with a different group of pupils in each session, a pupils attending all of either session would be considered as having attended the full day. Excused absence during examination periods; because of sickness; or for any other non-school activities reason should not be counted as days of attendance. See also DAY IN SESSION.

Debt Service - Expenditures for the retirement of debt principal and interest, except principal and interest of current loans.

Debt Service Fund - The fund used to finance and account for payment of interest and principal on all debt except principal and interest of current loans.

Declining Enrollment Supplement - In those districts where there is a decline between prior year and current year students, 50% of the decline is funded.

Deficit - The excess of the obligations of a fund over the fund's resources.

District Cost Differential (DCD) - An average of the previous three years of the Florida Price Level Index as determined by the Executive Office of the Governor. These three-year averages are adjusted as provided in Section 236.081(2), Florida Statutes. Its purpose is to recognize differences in the cost of living.

Dual Enrollment - Enrollment of an eligible secondary student in a post-secondary course at a public or eligible non-public community college or university or vocational center located in and operated by another school board under an inter-institutional articulation agreement, which meets the statutory requirements. The course

must offer credit leading to a high school diploma, to a vocational certificate, or towards an associate or baccalaureate degree.

Due from Other Funds - An asset account used to indicate amounts owed to a particular fund by another fund in the same school system for cash advanced, goods sold, or services rendered. It is recommended that separate accounts be maintained for each interfund receivable.

Due from Internal Funds - An asset account used to indicate amounts due from funds under control and management of the individual schools of the system.

Due from the State - Amounts due to the reporting district from the state. Separate accounts should be maintained for each receivable.

Due to Fiscal Agent - Amounts due to fiscal agents such as commercial banks, for servicing a school system are maturing indebtedness.

Due to Other Funds - A liability account used to indicate amounts owed by a particular fund to another fund in the same school system for cash advanced and goods or services received.

Due to the State - Amounts owed by the reporting district to the state. Separate accounts should be maintained for each payable.

Elementary School - A school classified as elementary by State and local practice and composed of any span of grades not above grade eight. Organizational patterns or subdivisions within these schools may be identified under pre-primary level, primary level, intermediate or upper elementary level.

Employee Benefits - Amounts paid by the school system on behalf of employees. These amounts are paid in addition to but are not included in the gross salary. Such payments are, in a sense, overhead payments. They are fringe benefit payments, and, while not paid directly to employees, nevertheless are part of the cost of salaries and benefits. Examples are: (a) Group health or Life Insurance; (b) Contributions to Employee Retirement; (c) Social Security; (d) Workmen's Compensation; and (e) payments made to personal or sabbatical leave.

Encumbrances - Commitments related to unperformed (executory) contracts for goods or services, for which a part of the appropriation is reserved. They cease to be encumbrances when paid or when actual liability is recognized.

Equipment - Expenditures for the initial, additional, or replacement items of equipment, such as furniture and machinery.

Estimated Revenue - The amount of revenue estimated to be collected during a fiscal year. The amount must be capable of being measured and it must be available for current year expenditures to be accrued.

Excess Insurance - Any insurance protection that is above the SIR (self-insured retention).

Expenditures - Decreases in net financial resources under the current resources measurement focus.

Facilities Acquisition and Construction - Consists of activities involved with the acquisition of land and buildings; remodeling buildings; the construction of and additions to buildings; initial installation or extension of service systems and other built-in equipment; and improvements to sites.

Facility - Refers to a physical place, usually referenced by a building designation or number. It should not be confused with the area of responsibilities of the school system. A single facility may house more than one "Service Area" or "Area of Responsibility". It is also not unusual for a Service Area or Area of Responsibility to be housed in more than one facility.

Family Empowerment Scholarship - The Family Empowerment Scholarship (FES) Program was established during the 2019 Legislative Session. It provides children with limited financial resources with the opportunity to attend the school that best meets their needs and enables them to reach their academic goals.

FEFP (Florida Education Finance Program) - In 1973, the Florida Legislature passed the Florida Education Finance Program to guarantee each student in the Florida public school system the availability of programs and services

appropriate to his/her educational needs which are substantially equal to those available to any similar student, notwithstanding geographic differences and varying local economic factors.

To provide equalization of educational opportunity in Florida, the FEFP formula recognizes (1) varying local property tax bases, (2) varying program cost factors, (3) district cost differentials, and (4) differences in per student cost for equivalent educational programs due to sparsity and dispersion of student population.

The key feature of the finance program is that it bases financial support for education upon the individual student participating in a particular educational program rather than upon the number of teachers or classrooms.

Financial Accounting Foundation (FAF) - Finances and oversees the Financial Accounting Standards Board (FASB) and the Governmental Accounting Standards Board (GASB).

Fiscal Year - An accounting period of 12 months at the end of which a school board determines its financial condition and the results of its operations, upon closing its books. The fiscal year for Leon County Schools is July 1 through June 30.

Fixed Assets - Land, buildings, machinery, furniture, and other equipment which the school system intends to hold or continue in use over a period of time in excess of 1 year. "Fixed" denotes probability or intent to continue use or possession, and does not indicate immobility of an asset.

FTE - A student in attendance 25 hours per week or a combination of full-time and part-time students receiving 25 hours of instruction per week. FTE is calculated twice during the 180-day school year for K-12 students and two times during the summer for Department of Juvenile Justice students.

Full Service Schools - A school used as a community center for low-income parents. It offers one-stop shopping for government services such as health clinics, sheriff's substations, adult literacy programs and HRS offices that handle food stamps, Medicaid and Social Security.

Full-Time Equivalent - The amount of employed time required in a part-time position expressed in proportion to the time required in a full-time position. It is derived by dividing the amount of employed time required in the part-time position by the amount of employed time required in a corresponding full-time position. It should be to the nearest tenth when expressed as a percentage.

Fund - A fiscal and accounting entity with resources set aside for specific activities of a school system. A fund constitutes a complete entity and all of the financial transactions for a particular fund are recorded in it. Major funds are General Operating Fund, Special Revenue Funds, Debt Service Fund, and Capital Projects Funds. Each of the funds may contain minor funds that are separately accounted for within the "umbrella" of the primary fund.

Fund Balance - The excess of the assets of a fund over its liabilities and reserves except in the case of funds subject to budgetary accounting where, prior to the end of the fiscal period, they represent the excess of assets and estimated revenues for the period over liabilities, reserves, and appropriations for the period.

General Fund - Used to account for all transactions, which do not have to be accounted for in another fund. Used to account for all ordinary "day-to-day" operations of a school system.

Governmental Accounting Standards Board (GASB) - Organized in 1984 by the Financial Accounting Foundation (FAF) to establish standards of financial accounting and reporting for state and local governments. These standards guide the preparation of external financial reports of those entities.

Grant, Public - A contribution, either money or material goods, made by one governmental unit to another governmental unit and for which the contributing unit expects no repayment. Grants may be for specific or general purposes.

Hold Harmless - Provides whatever amount is necessary to ensure that every district receives a 1% increase in total funding per weighted student total.

Improvement Other Than Buildings - Expenditures for the improvement of new and old sites and adjacent ways, consisting of such work as: Grading, landscaping, seeding and planting of shrubs and trees, constructing new sidewalks, roadways, retaining walls, sewer and storm drains, and installing hydrants; original surfacing and soil treatment of athletic fields and tennis courts; furnishing and installing for the first time, fixed playground apparatus, flagpoles, gateways, fences, and underground storage tanks which are not part of building service systems; and demolition work.

Indirect Expenses - Those elements of cost necessary for the provision of a service, which are of such nature that they cannot be readily or accurately identified with the specific service. For example, the custodial staff may clean corridors in a school building, which is used jointly by administrative, instructional, maintenance, and attendance personnel. In this case, a part of custodial salaries is an indirect expense of each service using the corridors. However, it is impossible to determine readily or accurately the amount of the salary to charge each of these services.

In-service Training - Pertains to the systematized activities directed by the school system that contributes to the professional or occupational growth and competence of staff members during the time of their service to the school system.

Instruction - Instruction includes the activities dealing directly with the teaching of pupils. Teaching may be provided for pupils in a school classroom; in another location such as in a home or hospital; and other learning situations such as those involving co-curricular activities. It may also be provided through some other approved medium such as television, radio, telephone, computer and correspondence.

Instructional Administration - Consists of those activities involved with directing and managing an instructional program for pupils, aiding teaching, and improving the quality of teaching and the curriculum.

Interfund Transfers - Money taken from one fund under the control of the board and added to another, budgeted fund under the board's control. Interfund transfers must be included on the budget of the school board.

Inventory - A detailed list or record showing quantities, descriptions, values, and frequently, units of measure and unit prices of property on hand at a given time. It is also, the cost of supplies and equipment on hand not yet distributed to requisitioning units.

Investments - Securities and real estate held for the production of income in the form of interest, dividends, rentals, or lease payments. The securities must be the type authorized by statute for the investment of school funds.

Judgments Payable - Amounts due to be paid by a school system as the result of court decisions, including condemnation awards in payment for private property taken for public use.

Levy - (verb) to impose taxes; (noun) the total of taxes imposed by a governmental unit.

Liabilities - Debt or other legal obligations arising out of transactions in the past which are payable but not necessarily due. Encumbrances are not liabilities; they become liabilities when the services or materials for which the encumbrance was established have been rendered or received.

Local Required Effort - See Required Local Effort.

Loss Fund - The dollar amount established to pay for claims falling within the Self Insured Retention (SIR) layer of coverage. This estimate is made using the worst case scenario.

Lottery District Discretionary Fund - An amount (Lottery Revenue) is appropriated from the Educational Enhancement Trust Fund to be expended in accordance with the school district adopted policies and procedures that define enhancement and the types of expenditures consistent with that definition. Districts are required to provide the Department of Education with a copy of these policies and procedures and to submit an annual report showing all actual expenditures of enhancement funds.

Magnet School - A public school that offers specialized learning, such as science, foreign languages or arts. It provides students more educational choices and is often part of a strategy to address the creation of a more favorable racial and ethnic mix of students.

McKay Scholarships - A voucher program where exceptional student education (ESE) students apply for the "scholarships" from the Department of Education. The amount of the voucher is deducted from the public school district's Florida Education Finance Program (FEFP) allocation and is sent to the private school the student has designated.

Membership - A pupil is a member of a class or school from the date entered in school and is placed on the current roll until withdrawing from the class or school for one of the causes recognized as sufficient by the State. The date of permanent withdrawal should be the date of official withdrawal and not necessarily the first day after the date of last attendance. Membership is obtained by adding the total original entries and the total re-entries and subtracting the total withdrawals; it may also be obtained by adding the total number present and the total number absent. This term is also known as the "number belonging."

Miscellaneous Expenditure - Expenditures for all expenses not classified in other accounts. School systems are cautioned to use this account title only after all other attempts to classify the expenditure have been exhausted.

Millage - A rate used in calculating taxes based upon the value of property, expressed in mills per dollar of property value. A mill is an increment of taxation measured in units of one-tenth of one cent, or (.001) one thousandth of one dollar. In Florida one mill is one thousandth of a dollar. This is equal to one dollar for every one thousand dollars of assessed property value.

No Child Left Behind (NCLB) Act - This is the most sweeping change made to the Elementary and Secondary Education Act since it was enacted in 1965. NCLB was signed into law by President Bush on January 8, 2001. It requires all states to utilize state assessments to determine if schools have made Adequate Yearly Progress (AYP) in the proficiency of all students. Four measures will be used for determine how well schools perform: (1) AYP (2) school grade (3) individual student progress towards annual learning targets to reach proficiency, and (4) a return on investment measure linking dollars to achievement.

Non-categorical - This is revenue from any source that is not identifiable with specific legislatively restricted expenditures. It is general fund revenue, which loses its identity as it is expended for objects relating to many service areas.

Object - An object of expenditure refers to the commodity or service obtained from a specific expenditure.

Obligations - Amounts which the school system will be required to pay out of its resources, including both liabilities and encumbrances.

Other Personal Services - Compensation for services rendered by a person who is not a regular or full-time employee filling an established position. The following classifications of employees are chargeable to OPS;

- a. Substitute Teachers - substitute teachers who are not under written contract to the board.
- b. Student - any person who is a bonafide student of that school district, college or university.
- c. Teacher Aides - teacher aides filling temporary positions that are established by months.
- d. Temporary Help - person performing services on a temporary basis on tasks that are non-continuous in nature (i.e., craftsmen hired by maintenance solely to construct portables and are released when task is completed, casual or day labor, other types of services that are non-repetitive).
- e. Adult Education and Vocational Instructors - Non-certified person(s), who are not regular employees, teaching courses that are non-continuous or temporary in nature.

Planning - Pertains to determining orderly techniques and processes for achieving objectives and fulfilling responsibilities. There are many levels of planning. At its highest level, planning is concerned with guiding internal change so that the school system effectively adapts to the dynamic community it serves.

Program Cost Factors - The cost of services on a per student basis used to allocate the base student allocation in a rational equitable manner.

Purchase Order - A document, authorizing the delivery of, specified merchandise or the rendering of certain services with a specific cost, used to budgetary reserve that amount until the goods are delivered or the service is rendered.

Purchased Services - Amounts paid for personal services rendered by personnel who are not on the payroll of the local education agency, and other services, which the local education agency may purchase. While a product may or may not result from the transaction, the primary reason for the purchase is the service rendered to obtain the results.

Reading Instruction - This appropriation must be spent on K-12 comprehensive district-wide system of research based reading instruction. Funds are released upon approval by DOE of the district's reading plan.

Receipts, Nonrevenue - Amounts received which either incurs an obligation that must be met at some future date or change the form of an asset from property to cash and therefore decrease the amount and value of school property. Money received from loans; sale of bonds; sale of property; and proceeds from insurance adjustments constitute most of the nonrevenue receipts.

Receipts, Revenue - Inflows or other asset enhancements during a period, which do not incur an obligation that must be met at some future, date and represent exchanges of property for money.

Refund - An amount paid back or credit allowed because of an over-collection or because of the return of an object sold; providing for the payment of a loan through cash or credit secured by a new loan.

Refund of Prior Year's Expenditures - Money received in refund of an expenditure made to a prior fiscal year's budget. A refund of an expenditure made in the same fiscal year's budget may be recorded in the appropriate expenditure account as a reduction of the expenditure.

Required Local Effort (RLE) - This is a millage rate established by the Florida Legislature as a requirement for participation in the Florida Education Finance Program.

Reserve - An amount set aside for some specified purpose.

Reserve for Encumbrance - A reserve representing the segregation of a portion of a fund balance to provide for services to be rendered or goods to be delivered. Separate accounts may be maintained for current and prior year encumbrances.

Revenues - Inflows or other asset enhancements during a designated period of time. At the end of the fiscal period, it is closed out to fund balance and does not appear as a separate item in the balance sheet prepared at the close of the fiscal period.

Roll Back Rate - This is the millage rate that would procure the same amount of dollars as the prior year if applied to the current year tax roll.

Safe Schools - Allocation to be used for (1) after school programs for middle school students, (2) other improvements to enhance the learning environment, including implementation of conflict resolution strategies, and (3) alternative school programs for adjudicated youth. Two-thirds of the allocation is based on the district's crime index published by the Florida Department of Law Enforcement and one-third is based on the district's weighted FTE.

School Term - A prescribed span of time when school is open and the pupils are under the guidance and direction of teachers. The minimum number of days for the school term is 180.

Scope of Service - The Scope of Service dimension relates breadth of activities of the area of responsibility, i.e., single school or system wide.

Self-Insurance - That portion of our insurance liability that the Board is willing to pay itself.

Self-Insured Retention (SIR) - The amount/limit of loss per incident/occurrence that the Board is willing to pay for each and every covered loss. These amounts are \$500,000 for automobile and general liability, \$100,000 for property, and \$500,000 for workers' compensation.

Source of Funds - This dimension identifies the expenditure with the source of revenue, i.e., local, state, federal, and other to differentiate categorical expenditures from non-categorical expenditures.

Sparsity Supplement - Allocation to recognize differences in sparsity of student population within a district. Eligibility is limited by the Appropriations Act Proviso to districts with 20,000 or fewer UFTE students.

Student Activity Funds - Used to record financial transactions related to school-sponsored pupil activities and interscholastic activities. These activities are supported in whole or in part by income from pupils, gate receipts, and other fund-raising activities.

Supplies - Expenditures for ALL supplies, which are actually or constructively consumed in the operation of a local education agency, including freight and cartage on them. A supply item is any article or material which meets any one or more of the following conditions; (1) it is consumed in use; (2) it loses its original shape or appearance with use; (3) it is expendable; that is, if the article is damaged or some of its parts are lost or worn out, it is usually more feasible to replace it with an entirely new unit rather than repair it; (4) it is an inexpensive item, having characteristics of equipment, whose small unit cost makes it inadvisable to capitalize the item; or (5) it loses its identity through incorporation into a different or more complex unit or substance. Included are coal and wood used for heating purposes. If such supplies are handled for resale to students, only the net cost of supplies is recorded here.

Supplemental Academic Instruction - The first priority for this appropriation is for supplemental intensive instruction including summer school and intensive English immersion instruction.

Supporting Services - Supporting services provide administrative, technical (such as guidance and health), and logistical support to facilitate and enhance instruction. Supporting Services provide the indirect activities needed to support and facilitate classroom instruction.

Teacher Lead Program - Funds sent to the District to be equally distributed to each teacher in the form of individualized checks to be spent for classroom materials and supplies at the discretion of the teacher to assist teaching and learning in the classroom.

Transfer from Other Funds - Money received unconditionally from another fund without expectation of repayment. Such monies are revenues of the receiving fund, but not of the school system as a whole. Separate accounts may be maintained for specific funds.

Travel - Costs for transportation, meals, hotel, and other expenses associated with traveling on business for the local education agency. Payments for Per Diem in lieu of reimbursements for subsistence (room and board) also are charged here.

Work Order - A written order authorizing and directing the performance of a certain task, issued to the person who is to direct the work. Among the information shown on the order are the nature and location of the job, specifications of the work to be performed, and a job number, which is referred to in reporting the amount of labor, materials, and equipment used.

Workforce Development - Replaces the traditional adult funding cost factors within the Florida Education Finance Program. A new process was created to provide performance-based funding for all workforce development programs based on cost categories, performance output measures, and performance outcome measures.

LEON COUNTY SCHOOLS

